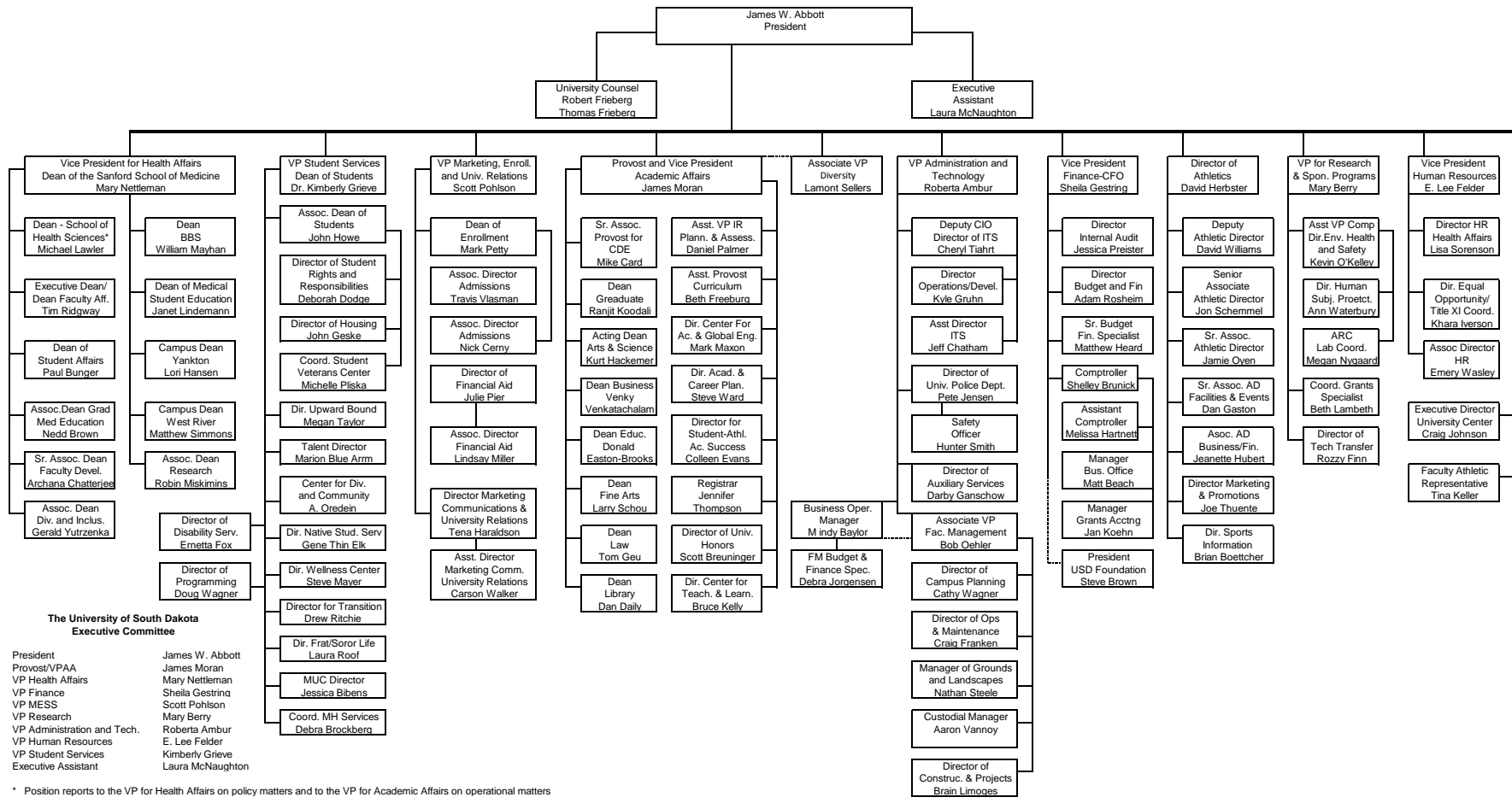


**THE UNIVERSITY OF SOUTH DAKOTA
ORGANIZATION CHART
2/2/2017**



- The University of South Dakota
Executive Committee**
- President James W. Abbott
 - Provost/VPAA James Moran
 - VP Health Affairs Mary Nettleman
 - VP Finance Sheila Gestrin
 - VP MESS Scott Pohson
 - VP Research Mary Berry
 - VP Administration and Tech. Roberta Ambur
 - VP Human Resources E. Lee Felder
 - VP Student Services Kimberly Grieve
 - Executive Assistant Laura McNaughton

* Position reports to the VP for Health Affairs on policy matters and to the VP for Academic Affairs on operational matters