

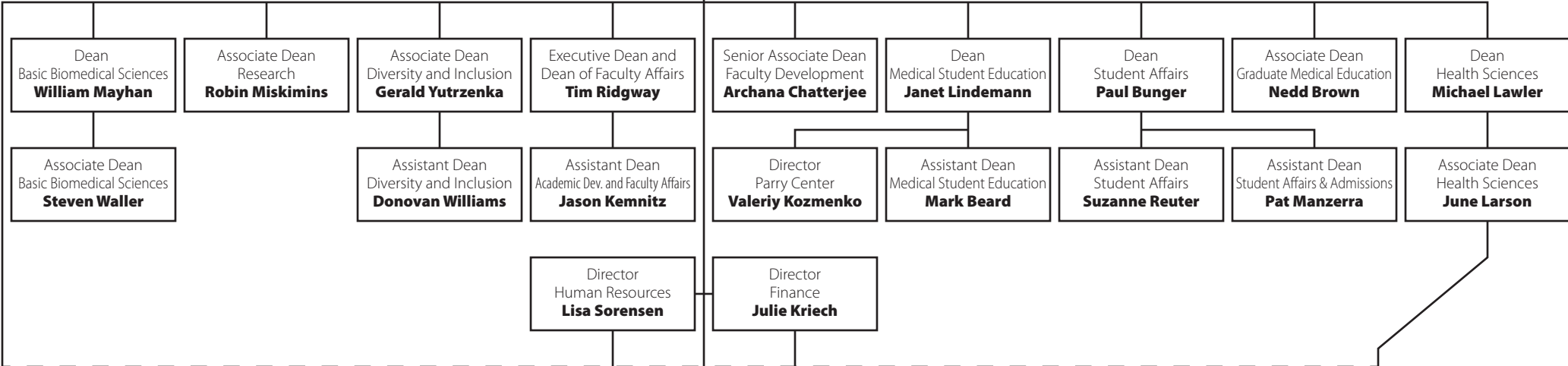


UNIVERSITY OF
SOUTH DAKOTA

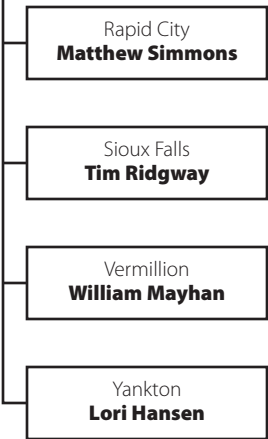
Health Affairs Organizational Chart

Vice President Health Affairs
and
Dean, Sanford School of Medicine
Mary Nettleman

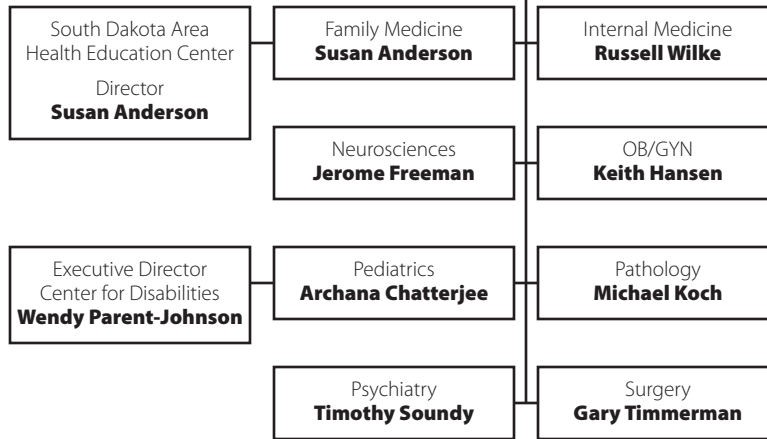
Executive Assistant to Vice President/Dean
Carmen Hammond



Sanford School of Medicine Campus Deans



Sanford School of Medicine Department Chairs



School of Health Sciences Department Chairs/Program Directors

