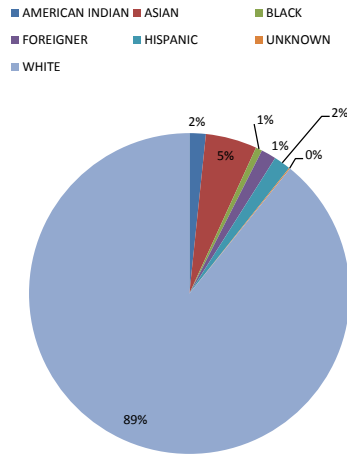
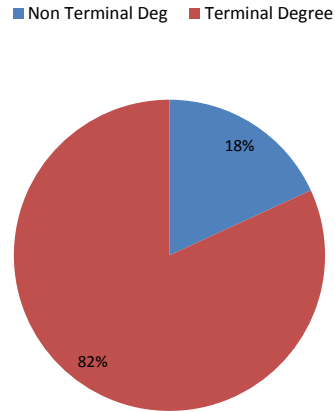


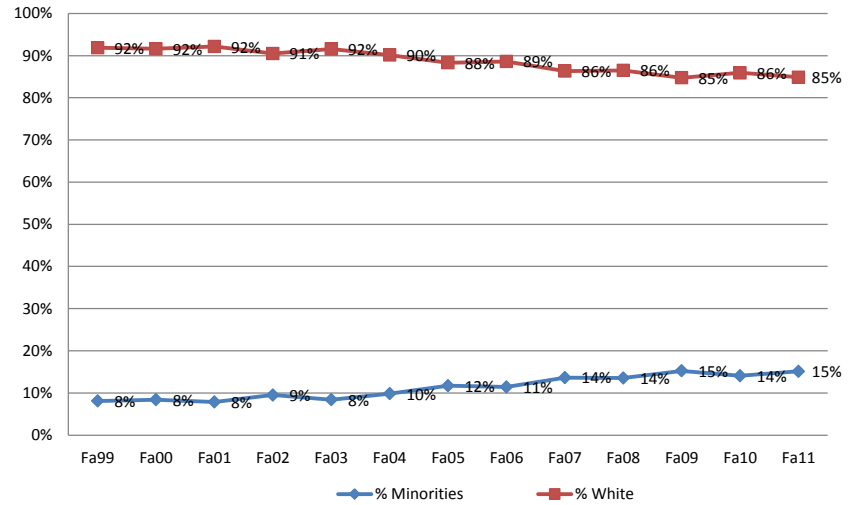
**Full-time Faculty by Race**



**Full-time Faculty by Terminal Degree**



**Full-time Faculty % of Minorities vs. % of White, Fall 1999 thru Fall 2011**



**THE UNIVERSITY OF SOUTH DAKOTA FULL-TIME FACULTY BY GENDER AND RACE**

	Fall 1999			Fall 2000			Fall 2001			Fall 2002			Fall 2003			Fall 2004			Fall 2005			Fall 2006			Fall 2007			Fall 2008			Fall 2009			Fall 2010			Fall 2011			Total				
	F	M	All	F	M	All	F	M	All	F	M	All	F	M	All	F	M	All	F	M	All	F	M	All	F	M	All	F	M	All	F	M	All	F	M	All	F	M	All	F	M	All	F	M
AMERICAN INDIAN	1	5	6	1	6	7	1	5	6	1	3	4	1	3	4	1	2	3	4	2	6	3	2	5	6	2	8	5	2	7	7	3	10	9	3	12	8	2	10	48	40	88		
ASIAN	6	7	13	6	7	13	6	6	12	4	7	11	3	9	12	6	9	15	6	13	19	5	14	19	7	21	28	8	22	30	9	25	34	13	30	43	86	191	277					
BLACK	1		1	1		1	1		1	1	2	3	1	1	2	1	3	4	1	3	4	1	2	3	1	2	3	1	2	3	1	2	3	1	3	4	13	22	35					
FOREIGNER	2	5	7		6	6	1	6	7	2	7	9	3	7	10	7	6	13	6	7	13	4	10	14							2	2					25	56	81					
HISPANIC	4	4	8	4	4	8	2	4	6	3	4	7	1	4	5	1	4	5	1	3	4	2	3	5	5	4	9	5	4	9	7	3	10	4	4	8	4	3	7	43	48	91		
UNKNOWN																				2	2		2	2		2	2		2	2										0	6	6		
WHITE	155	241	396	152	230	382	153	222	375	146	197	343	158	200	358	167	198	365	171	197	368	173	197	370	177	189	366	175	194	369	178	186	364	178	182	360	180	179	359	2163	2612	4775		
% of AM,A,B,F,H	8%	8%	8%	7%	9%	8%	7%	9%	8%	7%	11%	9%	5%	11%	8%	9%	11%	10%	10%	13%	12%	8%	14%	11%	8%	18%	14%	10%	16%	14%	14%	17%	15%	11%	17%	14%	13%	18%	15%	9%	12%	11%		
% of White	92%	92%	92%	93%	91%	92%	93%	91%	92%	93%	89%	91%	95%	89%	92%	91%	89%	90%	90%	87%	88%	92%	86%	89%	92%	82%	86%	90%	84%	86%	86%	83%	85%	89%	83%	86%	87%	82%	85%	91%	88%	89%		
Grand Total	169	262	431	164	253	417	164	243	407	157	220	377	167	224	391	183	222	405	189	225	414	188	230	418	196	220	416	193	225	418	201	216	417	201	218	419	206	217	423	2378	2975	5353		

Data source: USDIR.

\*Full-time faculty represents Medical School and Non-Medical School instructional faculty. \*\*Any differences between this publication and previous ones are due to a reclassification of post-doctoral research fellows.

**THE UNIVERSITY OF SOUTH DAKOTA FULL-TIME FACULTY BY GENDER AND TERMINAL DEGREE EARNED**

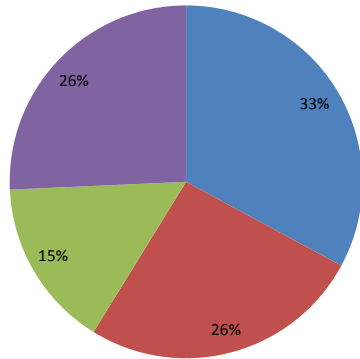
	Fall 1999			Fall 2000			Fall 2001			Fall 2002			Fall 2003			Fall 2004			Fall 2005			Fall 2006			Fall 2007			Fall 2008			Fall 2009			Fall 2010			Fall 2011			Total				
	F	M	All	F	M	All	F	M	All	F	M	All	F	M	All	F	M	All	F	M	All	F	M	All	F	M	All	F	M	All	F	M	All	F	M	All	F	M	All	F	M	All	F	M
Non Terminal Deg	46	21	67	50	18	68	47	23	70	48	20	68	54	23	77	60	18	78	69	21	90	65	11	76	54	19	73	54	18	72	57	19	76	60	18	78	63	15	78	727	244	971		
Terminal Degree	123	241	364	114	235	349	117	220	337	109	200	309	113	201	314	123	204	327	120	204	324	123	219	342	142	201	343	139	207	346	144	197	341	141	200	341	143	202	345	1651	2731	4382		
% of Terminal Deg	73%	92%	84%	70%	93%	84%	71%	91%	83%	69%	91%	82%	68%	90%	80%	67%	92%	81%	63%	91%	78%	65%	95%	82%	72%	91%	82%	72%	92%	83%	72%	91%	82%	70%	92%	81%	69%	93%	82%	69%	92%	82%		
Total	169	262	431	164	253	417	164	243	407	157	220	377	167	224	391	183	222	405	189	225	414	188	230	418	196	220	416	193	225	418	201	216	417	201	218	419	206	217	423	2378	2975	5353		

Data source: USDIR.

\*Full-time faculty represents Medical School and Non-Medical School instructional faculty. \*\*Any differences between this publication and previous ones are due to a reclassification of post-doctoral research fellows.

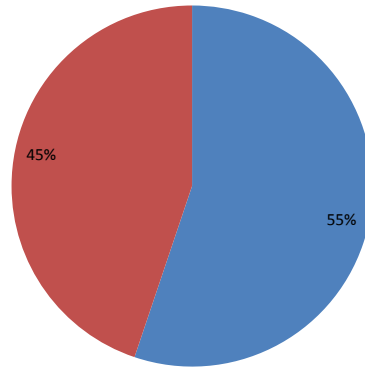
**Full-time Faculty by Rank**

■ Assi Prof ■ Asso Prof ■ Instructor ■ Prof

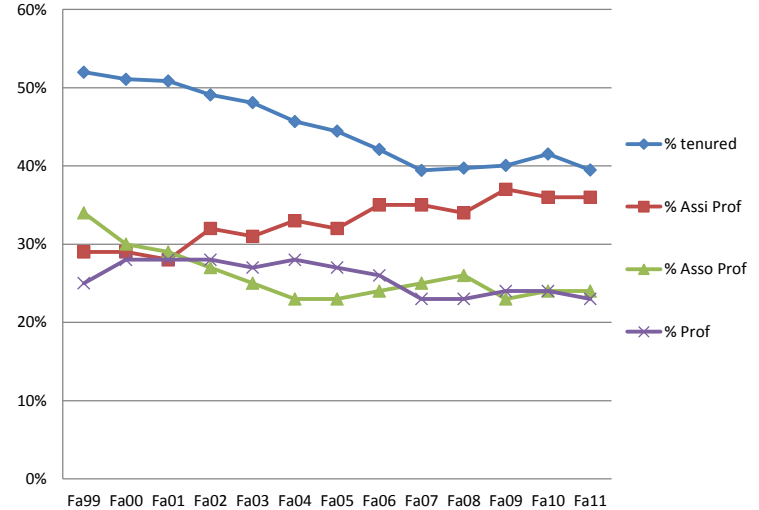


**Full-time Faculty by Tenure Status**

■ Non-Tenured ■ Tenured



**% of Full-time Faculty by Rank & Tenure Status**



**THE UNIVERSITY OF SOUTH DAKOTA FULL-TIME FACULTY BY GENDER AND RANK**

	Fall 1999			Fall 2000			Fall 2001			Fall 2002			Fall 2003			Fall 2004			Fall 2005			Fall 2006			Fall 2007			Fall 2008			Fall 2009			Fall 2010			Fall 2011			Total		
	F	M	All	F	M	All	F	M	All	F	M	All	F	M	All	F	M	All	F	M	All	F	M	All	F	M	All	F	M	All	F	M	All	F	M	All	F	M	All	F	M	All
ASSISTANT	69	58	127	64	56	120	62	52	114	64	56	120	61	62	123	66	66	132	66	66	132	67	79	146	79	68	147	75	69	144	81	72	153	80	69	149	82	71	153	916	844	1760
% of Assi Prof	41%	22%	29%	39%	22%	29%	38%	21%	28%	41%	25%	32%	37%	28%	31%	36%	30%	33%	35%	29%	32%	36%	34%	35%	40%	31%	35%	39%	31%	34%	40%	33%	37%	40%	32%	36%	40%	33%	36%	39%	28%	33%
ASSOCIATE	47	98	145	42	82	124	43	75	118	38	63	101	40	59	99	39	56	95	39	55	94	41	58	99	41	64	105	40	67	107	38	59	97	37	63	100	43	60	103	528	859	1387
% of Asso Prof	28%	37%	34%	26%	32%	30%	26%	31%	29%	24%	29%	27%	24%	26%	25%	21%	25%	23%	21%	24%	23%	22%	25%	24%	21%	29%	25%	21%	30%	26%	19%	27%	23%	18%	29%	24%	21%	28%	24%	22%	29%	26%
INSTRUCTOR	36	15	51	39	16	55	41	19	60	35	16	51	44	18	62	51	14	65	57	18	75	51	14	65	48	20	68	48	21	69	50	18	68	49	21	70	50	21	71	599	231	830
% of Instructor	21%	6%	12%	24%	6%	13%	25%	8%	15%	22%	7%	14%	26%	8%	16%	28%	6%	16%	30%	8%	18%	27%	6%	16%	24%	9%	16%	25%	9%	17%	25%	8%	16%	24%	10%	17%	24%	10%	17%	25%	8%	16%
PROFESSOR	17	91	108	19	99	118	18	97	115	20	85	105	22	85	107	27	86	113	27	86	113	29	79	108	28	68	96	30	68	98	32	67	99	35	65	100	31	65	96	335	1041	1376
% of Prof	10%	35%	25%	12%	39%	28%	11%	40%	28%	13%	39%	28%	13%	38%	27%	15%	39%	28%	14%	38%	27%	15%	34%	26%	14%	31%	23%	16%	30%	23%	16%	31%	24%	17%	30%	24%	15%	30%	23%	14%	35%	26%
Grand Total	169	262	431	164	253	417	164	243	407	157	220	377	167	224	391	183	222	405	189	225	414	188	230	418	196	220	416	193	225	418	201	216	417	201	218	419	206	217	423	2378	2975	5353

Data source: USDIR.

Full-time faculty represents Medical School and Non-Medical School instructional faculty.

**THE UNIVERSITY OF SOUTH DAKOTA FULL-TIME FACULTY BY GENDER AND TENURE STATUS**

	Fall 1999			Fall 2000			Fall 2001			Fall 2002			Fall 2003			Fall 2004			Fall 2005			Fall 2006			Fall 2007			Fall 2008			Fall 2009			Fall 2010			Fall 2011			Total		
	F	M	All	F	M	All	F	M	All	F	M	All	F	M	All	F	M	All	F	M	All	F	M	All	F	M	All	F	M	All	F	M	All	F	M	All	F	M	All	F	M	All
Non-Tenured	114	93	207	113	91	204	110	90	200	106	86	192	114	89	203	129	91	220	132	98	230	130	112	242	143	109	252	141	111	252	146	104	250	147	98	245	155	101	256	1680	1273	2953
Tenured	55	169	224	51	162	213	54	153	207	51	134	185	53	135	188	54	131	185	57	127	184	58	118	176	53	111	164	52	114	166	55	112	167	54	120	174	51	116	167	698	1702	2400
% Tenured	33%	65%	52%	31%	64%	51%	33%	63%	51%	32%	61%	49%	32%	60%	48%	30%	59%	46%	30%	56%	44%	31%	51%	42%	27%	50%	39%	27%	51%	40%	27%	52%	40%	27%	55%	42%	25%	53%	39%	29%	57%	45%
Total	169	262	431	164	253	417	164	243	407	157	220	377	167	224	391	183	222	405	189	225	414	188	230	418	196	220	416	193	225	418	201	216	417	201	218	419	206	217	423	2378	2975	5353

Data source: USDIR.

\*Full-time faculty represents Medical School and Non-Medical School instructional faculty. \*\*Any differences between this publication and previous ones are due to a reclassification of post-doctoral research fellows.