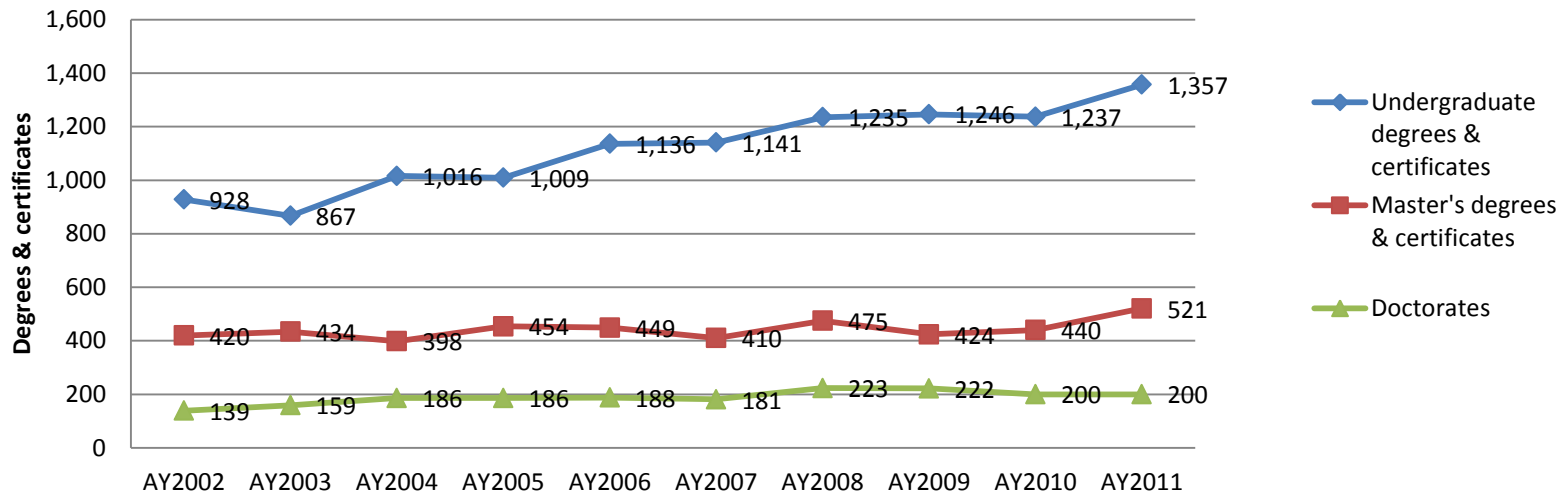


Degrees Awarded by The University of South Dakota



DEGREES AWARDED BY THE UNIVERSITY OF SOUTH DAKOTA

| | AY2002 | AY2003 | AY2004 | AY2005 | AY2006 | AY2007 | AY2008 | AY2009 | AY2010 | AY2011 |
|------------------------------|-------------|-------------|-------------|-------------|-------------|-------------|-------------|-------------|-------------|-------------|
| ASSOCIATES | 145 | 149 | 224 | 247 | 294 | 319 | 284 | 310 | 313 | 313 |
| CERTIFICATE | | | | | | 17 | 12 | 3 | 11 | 13 |
| BACCALAUREATES | 783 | 718 | 792 | 762 | 842 | 805 | 939 | 933 | 913 | 1031 |
| GRADUATE CERTIFICATES | | | | | | | | | 16 | 16 |
| MASTERS | 397 | 411 | 372 | 430 | 422 | 390 | 448 | 395 | 411 | 484 |
| EDUCATION SPECIALIST | 23 | 23 | 26 | 24 | 27 | 20 | 27 | 29 | 29 | 37 |
| DOCTORATES | 45 | 49 | 60 | 54 | 52 | 54 | 61 | 72 | 62 | 57 |
| AUDIOLOGY (Doctor of) | 0 | 0 | 0 | 0 | 0 | 0 | 1 | 3 | 3 | 5 |
| LAW (Juris Doctor) | 43 | 58 | 77 | 84 | 85 | 73 | 87 | 73 | 63 | 55 |
| MED (Doctor of Medicine) | 51 | 52 | 49 | 48 | 51 | 48 | 53 | 47 | 46 | 50 |
| PHYSICAL THERAPY (Doctor of) | 0 | 0 | 0 | 0 | 0 | 6 | 21 | 27 | 26 | 33 |
| TOTAL | 1487 | 1460 | 1600 | 1649 | 1773 | 1732 | 1933 | 1892 | 1893 | 2094 |

Data Source: USDIR. Last updated October 2011.

AY = Academic Year: July 1 to June 30.

Doctorates include: Doctor of Education, Doctor of Philosophy

COMPLETIONS FROM JULY 1, 2001 TO JUNE 30, 2002
 BY LEVEL - 1st & 2nd MAJORS MALE & FEMALE

| CIP | LEVEL | ALIEN | 1 BLACK | 2 AM INDIAN | 3 ASIAN | 4 HISPANIC | 5 WHITE | 6 UNKN | 7 TOTAL | |
|--|-------|-------|------------|----------------|------------|---------------|------------|-----------|------------|-----|
| 31.0101 - Parks Recreation & Leisure | 5 | | 0 | 3 | 0 | 0 | 0 | 23 | 2 | 28 |
| 38.0101 - Philosophy | 5 | | 0 | 0 | 0 | 0 | 0 | 1 | 0 | 1 |
| 40.0501 - Chemistry | 5 | | 1 | 0 | 0 | 1 | 0 | 9 | 0 | 11 |
| 40.0601 - Geology/Earth Science, Gene | 5 | | 0 | 0 | 0 | 0 | 0 | 1 | 0 | 1 |
| 40.0801 - Physics | 5 | | 0 | 0 | 0 | 0 | 0 | 2 | 0 | 2 |
| 42.0101 - Psychology | 5 | | 1 | 0 | 1 | 1 | 0 | 74 | 2 | 79 |
| 43.0104 - Criminal Justice Studies | 5 | | 0 | 0 | 0 | 0 | 0 | 38 | 0 | 38 |
| 45.0201 - Anthropology | 5 | | 0 | 0 | 1 | 0 | 0 | 4 | 0 | 5 |
| 45.0601 - Economics | 5 | | 0 | 0 | 0 | 0 | 0 | 7 | 0 | 7 |
| 45.1001 - Political Science | 5 | | 0 | 0 | 1 | 0 | 0 | 24 | 1 | 26 |
| 45.1101 - Sociology | 5 | | 0 | 0 | 0 | 0 | 0 | 6 | 0 | 6 |
| 50.0501 - Drama/Theater Arts | 5 | | 0 | 0 | 0 | 0 | 0 | 7 | 0 | 7 |
| 50.0701 - Art | 5 | | 0 | 0 | 0 | 0 | 0 | 9 | 0 | 9 |
| 50.0901 - Music | 5 | | 0 | 0 | 0 | 0 | 0 | 0 | 0 | 0 |
| 50.0903 - Music Performance, General | 5 | | 0 | 0 | 0 | 0 | 0 | 1 | 0 | 1 |
| 51.0201 - Communication Disorders | 5 | | 0 | 0 | 0 | 0 | 0 | 14 | 0 | 14 |
| 51.0602 - Dental Hygienist | 5 | | 0 | 0 | 0 | 0 | 0 | 9 | 0 | 9 |
| 51.0702 - Hospital/Health Servs Admn | 5 | | 0 | 0 | 0 | 0 | 0 | 17 | 0 | 17 |
| 51.0912 - Physician Assistant | 5 | | 0 | 0 | 0 | 0 | 0 | 19 | 2 | 21 |
| 51.1005 - Medical Technology | 5 | | 0 | 0 | 0 | 0 | 0 | 0 | 0 | 0 |
| 51.1501 - Alcohol/Drug Abuse Counselir | 5 | | 0 | 1 | 0 | 0 | 0 | 11 | 0 | 12 |
| 51.1503 - Clinical & Medical Social Worl | 5 | | 0 | 1 | 0 | 0 | 0 | 19 | 2 | 22 |
| 52.0201 - Business Admn & Mgmt | 5 | | 1 | 0 | 5 | 0 | 1 | 121 | 2 | 130 |
| 52.0301 - Accounting | 5 | | 0 | 0 | 0 | 0 | 0 | 33 | 1 | 34 |
| 52.0801 - Finance, General | 5 | | 0 | 0 | 0 | 0 | 0 | 0 | 0 | 0 |
| 54.0101 - History - General | 5 | | 0 | 0 | 0 | 0 | 0 | 17 | 0 | 17 |
| | | | 5 | 6 | 14 | 6 | 4 | 732 | 16 | 783 |
| MASTER | | | | | | | | | | |
| 09.0102 - Mass Comm | 7 | | 1 | 0 | 0 | 1 | 0 | 4 | 0 | 6 |
| 11.0101 - Computer Science | 7 | | 3 | 0 | 0 | 2 | 0 | 5 | 0 | 10 |
| 13.0401 - Education Admn | 7 | | 0 | 0 | 0 | 0 | 0 | 21 | 1 | 22 |
| 13.0501 - Ed/Inst Media Design | 7 | | 0 | 0 | 0 | 0 | 0 | 12 | 1 | 13 |

COMPLETIONS FROM JULY 1, 2001 TO JUNE 30, 2002
 BY LEVEL - 1st & 2nd MAJORS MALE & FEMALE

| CIP | LEVEL | ALIEN | 1 BLACK | 2 AM INDIAN | 3 ASIAN | 4 HISPANIC | 5 WHITE | 6 UNKN | 7 TOTAL | |
|--|-------|-------|------------|----------------|------------|---------------|------------|-----------|------------|-----|
| 13.1001 - Special Education | 7 | 7 | 0 | 0 | 0 | 0 | 0 | 16 | 1 | 17 |
| 13.1101 - Ed Counseling | 7 | 7 | 0 | 0 | 0 | 0 | 1 | 16 | 1 | 18 |
| 13.1202 - Elementary Teacher Ed | 7 | 7 | 0 | 0 | 0 | 0 | 0 | 22 | 0 | 22 |
| 13.1205 - Secondary Teacher Ed | 7 | 7 | 1 | 0 | 0 | 0 | 0 | 17 | 2 | 20 |
| 13.1314 - Physical Ed Teaching | 7 | 7 | 1 | 0 | 1 | 0 | 0 | 17 | 3 | 22 |
| 13.1331 - Speech Teacher Ed | 7 | 7 | 2 | 0 | 0 | 0 | 0 | 6 | 0 | 8 |
| 23.0101 - English Language & Lit | 7 | 7 | 0 | 0 | 0 | 0 | 0 | 6 | 0 | 6 |
| 23.1001 - Communication Studies | 7 | 7 | 0 | 0 | 0 | 0 | 0 | 0 | 0 | 0 |
| 24.0101 - Liberal Studies | 7 | 7 | 1 | 0 | 2 | 1 | 0 | 8 | 0 | 12 |
| 26.0101 - Biology, General | 7 | 7 | 0 | 0 | 0 | 1 | 0 | 5 | 0 | 6 |
| 26.0202 - Biomedical Sciences, General | 7 | 7 | 0 | 0 | 0 | 1 | 0 | 1 | 0 | 2 |
| 27.0101 - Mathematics | 7 | 7 | 2 | 0 | 0 | 0 | 0 | 2 | 0 | 4 |
| 30.0101 - Biological & Physical Sciences | 7 | 7 | 0 | 0 | 0 | 0 | 0 | 1 | 0 | 1 |
| 40.0501 - Chemistry | 7 | 7 | 2 | 0 | 0 | 0 | 0 | 0 | 0 | 2 |
| 42.0101 - Psychology | 7 | 7 | 1 | 0 | 2 | 1 | 0 | 1 | 2 | 7 |
| 44.0601 - Counseling Psychology | 7 | 7 | 0 | 0 | 0 | 0 | 0 | 0 | 0 | 0 |
| 44.0001 - Human Services - MSAS | 7 | 7 | 1 | 0 | 0 | 0 | 0 | 25 | 2 | 28 |
| 44.0401 - Public Administration | 7 | 7 | 0 | 0 | 0 | 0 | 0 | 6 | 0 | 6 |
| 45.1001 - Political Science | 7 | 7 | 0 | 0 | 0 | 0 | 0 | 1 | 0 | 1 |
| 45.1101 - Sociology | 7 | 7 | 0 | 0 | 0 | 0 | 0 | 0 | 0 | 0 |
| 50.0501 - Drama/Theater Arts | 7 | 7 | 0 | 0 | 0 | 0 | 0 | 2 | 0 | 2 |
| 50.0701 - Art | 7 | 7 | 1 | 0 | 0 | 0 | 0 | 3 | 0 | 4 |
| 50.0901 - Music | 7 | 7 | 2 | 0 | 0 | 0 | 0 | 4 | 0 | 6 |
| 50.0902 - Music History & Lit | 7 | 7 | 0 | 0 | 0 | 0 | 0 | 0 | 0 | 0 |
| 51.0201 - Communication Disorders | 7 | 7 | 0 | 0 | 0 | 0 | 0 | 19 | 4 | 23 |
| 51.2306 - Occupational Therapy | 7 | 7 | 0 | 0 | 0 | 0 | 0 | 13 | 1 | 14 |
| 51.2308 - Physical Therapy | 7 | 7 | 0 | 0 | 0 | 0 | 0 | 24 | 1 | 25 |
| 52.0201 - Business Admn & Mgmt | 7 | 7 | 6 | 0 | 2 | 1 | 0 | 51 | 9 | 69 |
| 52.0301 - Accounting | 7 | 7 | 1 | 0 | 0 | 0 | 0 | 15 | 0 | 16 |
| 54.0101 - History, General | 7 | 7 | 0 | 0 | 0 | 0 | 0 | 4 | 1 | 5 |
| | | | 25 | 0 | 7 | 8 | 1 | 327 | 29 | 397 |
| SPECIALIST | | | | | | | | | | |
| 13.0401 - Education Admn | 8 | 8 | 0 | 0 | 0 | 0 | 0 | 16 | 0 | 16 |

COMPLETIONS FROM JULY 1, 2001 TO JUNE 30, 2002
 BY LEVEL - 1st & 2nd MAJORS MALE & FEMALE

| CIP | LEVEL | ALIEN | 1 BLACK | 2 AM INDIAN | 3 ASIAN | 4 HISPANIC | 5 WHITE | 6 UNKN | 7 TOTAL | |
|---------------------------------------|-------|-------|------------|----------------|------------|---------------|------------|-----------|------------|------|
| 13.0501 - Ed/Inst Media Design | 8 | | 1 | 0 | 0 | 0 | 0 | 1 | 0 | 2 |
| 13.1101 - Ed Counseling | 8 | | 0 | 0 | 0 | 0 | 0 | 5 | 0 | 5 |
| 42.0601 - Counseling Psychology | 8 | | 0 | 0 | 0 | 0 | 0 | 0 | 0 | 0 |
| | | | 1 | 0 | 0 | 0 | 0 | 22 | 0 | 23 |
| DOCTORATE | | | | | | | | | | |
| 13.0301 - Curriculum & Instruction | 9 | | 1 | 1 | 0 | 0 | 0 | 1 | 0 | 3 |
| 13.0401 - Education Admn | 9 | | 3 | 0 | 0 | 2 | 0 | 21 | 1 | 27 |
| 13.1101 - Ed Counseling | 9 | | 0 | 0 | 0 | 0 | 0 | 6 | 0 | 6 |
| 23.0101 - English Language & Lit | 9 | | 0 | 0 | 0 | 0 | 0 | 1 | 0 | 1 |
| 26.0101 - Biology, General | 9 | | 0 | 0 | 0 | 0 | 0 | 1 | 0 | 1 |
| 26.0202 - Biomedical Sciences, Genera | 9 | | 0 | 0 | 0 | 0 | 0 | 0 | 0 | 0 |
| 26.0501 - Medical Microbiology & Bact | 9 | | | | | | | | | |
| 26.0901 - Physiology and Pharmacology | 9 | | 1 | 0 | 0 | 0 | 0 | 0 | 0 | 1 |
| 42.0101 - Psychology | 9 | | 0 | 0 | 1 | 0 | 0 | 5 | 0 | 6 |
| | | | 5 | 1 | 1 | 2 | 0 | 35 | 1 | 45 |
| 1st PROFESSIONAL | | | | | | | | | | |
| 22.0101 - Law (JD) | 10 | | 1 | 0 | 1 | 0 | 0 | 40 | 1 | 43 |
| 51.1201 - Medicine (MD) | 10 | | 0 | 0 | 2 | 1 | 0 | 46 | 2 | 51 |
| | | | 1 | 0 | 3 | 1 | 0 | 86 | 3 | 94 |
| GRAND TOTALS | | | 37 | 7 | 28 | 18 | 6 | 1336 | 55 | 1487 |

COMPLETIONS FROM JULY 1, 2002 TO JUNE 30, 2003
 BY LEVEL - 1st & 2nd MAJORS MALE & FEMALE

| CIP | LEVEL | ALIEN | 1 BLACK | 2 AM INDIAN | 3 ASIAN | 4 HISPANIC | 5 WHITE | 6 UNKN | 7 TOTAL | |
|--|-------|-------|------------|----------------|------------|---------------|------------|-----------|------------|-----|
| 31.0101 - Parks Recreation & Leisure | 5 | 0 | 1 | 0 | 0 | 0 | 19 | 2 | 22 | |
| 38.0101 - Philosophy | 5 | 0 | 0 | 0 | 0 | 0 | 1 | 0 | 1 | |
| 40.0501 - Chemistry | 5 | 0 | 0 | 0 | 0 | 0 | 10 | 0 | 10 | |
| 40.0601 - Geology/Earth Science, General | 5 | 0 | 0 | 0 | 0 | 0 | 3 | 0 | 3 | |
| 40.0801 - Physics | 5 | 0 | 0 | 0 | 0 | 1 | 6 | 0 | 7 | |
| 42.0101 - Psychology | 5 | 0 | 0 | 1 | 1 | 0 | 68 | 3 | 73 | |
| 43.0104 - Criminal Justice Studies | 5 | 0 | 0 | 0 | 0 | 0 | 42 | 0 | 42 | |
| 45.0201 - Anthropology | 5 | 0 | 0 | 0 | 0 | 0 | 6 | 2 | 8 | |
| 45.0601 - Economics | 5 | 0 | 0 | 1 | 0 | 0 | 7 | 0 | 8 | |
| 45.1001 - Political Science | 5 | 1 | 0 | 0 | 0 | 0 | 31 | 0 | 32 | |
| 45.1101 - Sociology | 5 | 0 | 0 | 0 | 0 | 0 | 9 | 2 | 11 | |
| 50.0501 - Drama/Theater Arts | 5 | 0 | 0 | 0 | 0 | 0 | 6 | 0 | 6 | |
| 50.0701 - Art | 5 | 0 | 0 | 1 | 1 | 0 | 6 | 0 | 8 | |
| 50.0901 - Music | 5 | 0 | 0 | 0 | 0 | 0 | 1 | 0 | 1 | |
| 50.0903 - Music Performance, General | 5 | 0 | 0 | 0 | 0 | 0 | 0 | 0 | 0 | |
| 51.0201 - Communication Disorders | 5 | 0 | 0 | 1 | 0 | 0 | 10 | 0 | 11 | |
| 51.0602 - Dental Hygienist | 5 | 0 | 0 | 0 | 0 | 0 | 14 | 0 | 14 | |
| 51.0702 - Hospital/Health Servs Admn | 5 | 0 | 1 | 0 | 0 | 0 | 10 | 0 | 11 | |
| 51.0912 - Physician Assistant | 5 | 0 | 0 | 1 | 1 | 1 | 18 | 0 | 21 | |
| 51.1005 - Medical Technology | 5 | 0 | 0 | 2 | 0 | 1 | 3 | 0 | 6 | |
| 51.1501 - Alcohol/Drug Abuse Counseling | 5 | 0 | 0 | 1 | 0 | 0 | 3 | 0 | 4 | |
| 51.1503 - Clinical & Medical Social Work | 5 | 0 | 0 | 1 | 0 | 0 | 17 | 0 | 18 | |
| 52.0201 - Business Admn & Mgmt | 5 | 0 | 0 | 2 | 1 | 1 | 106 | 3 | 113 | |
| 52.0301 - Accounting | 5 | 1 | 0 | 1 | 0 | 0 | 28 | 0 | 30 | |
| 52.0801 - Finance, General | 5 | 0 | 0 | 0 | 0 | 0 | 0 | 0 | 0 | |
| 54.0101 - History - General | 5 | 0 | 0 | 1 | 0 | 0 | 14 | 0 | 15 | |
| | | | 7 | 3 | 16 | 7 | 5 | 661 | 19 | 718 |
| MASTER | | | | | | | | | | |
| 09.0102 - Mass Comm | 7 | 1 | 0 | 0 | 0 | 0 | 4 | 0 | 5 | |
| 11.0101 - Computer Science | 7 | 5 | 0 | 0 | 1 | 0 | 3 | 0 | 9 | |
| 13.0401 - Education Admn | 7 | 1 | 0 | 0 | 0 | 0 | 15 | 2 | 18 | |
| 13.0501 - Ed/Inst Media Design | 7 | 1 | 0 | 0 | 0 | 0 | 23 | 2 | 26 | |

COMPLETIONS FROM JULY 1, 2002 TO JUNE 30, 2003
 BY LEVEL - 1st & 2nd MAJORS MALE & FEMALE

| CIP | LEVEL | ALIEN | 1 BLACK | 2 AM INDIAN | 3 ASIAN | 4 HISPANIC | 5 WHITE | 6 UNKN | 7 | TOTAL |
|--|-------|-------|------------|----------------|------------|---------------|------------|-----------|---|-------|
| 13.1001 - Special Education | 7 | 0 | 0 | 0 | 0 | 0 | 0 | 13 | 1 | 14 |
| 13.1101 - Ed Counseling | 7 | 0 | 0 | 0 | 0 | 0 | 0 | 12 | 1 | 13 |
| 13.1202 - Elementary Teacher Ed | 7 | 0 | 0 | 0 | 0 | 1 | 13 | 0 | 0 | 14 |
| 13.1205 - Secondary Teacher Ed | 7 | 0 | 0 | 0 | 0 | 0 | 24 | 0 | 0 | 24 |
| 13.1314 - Physical Ed Teaching | 7 | 0 | 0 | 0 | 0 | 1 | 11 | 0 | 0 | 12 |
| 13.1331 - Speech Teacher Ed | 7 | 2 | 0 | 0 | 0 | 0 | 3 | 0 | 0 | 5 |
| 23.0101 - English Language & Lit | 7 | 0 | 0 | 0 | 0 | 0 | 13 | 1 | 0 | 14 |
| 23.1001 - Communication Studies | 7 | 0 | 0 | 0 | 0 | 0 | 0 | 0 | 0 | 0 |
| 24.0101 - Liberal Studies | 7 | 0 | 0 | 2 | 1 | 0 | 7 | 0 | 0 | 10 |
| 26.0101 - Biology, General | 7 | 0 | 0 | 0 | 0 | 1 | 8 | 0 | 0 | 9 |
| 26.0202 - Biomedical Sciences, General | 7 | 0 | 0 | 0 | 0 | 0 | 0 | 0 | 0 | 0 |
| 27.0101 - Mathematics | 7 | 0 | 0 | 0 | 0 | 0 | 0 | 0 | 0 | 0 |
| 30.0101 - Biological & Physical Sciences | 7 | 0 | 0 | 0 | 0 | 0 | 0 | 0 | 0 | 0 |
| 40.0501 - Chemistry | 7 | 2 | 0 | 0 | 0 | 0 | 1 | 0 | 0 | 3 |
| 42.0101 - Psychology | 7 | 1 | 0 | 0 | 0 | 1 | 6 | 1 | 0 | 9 |
| 44.0601 - Counseling Psychology | 7 | 0 | 0 | 0 | 0 | 0 | 0 | 0 | 0 | 0 |
| 44.0001 - Human Services - MSAS | 7 | 0 | 0 | 0 | 0 | 0 | 27 | 3 | 0 | 30 |
| 44.0401 - Public Administration | 7 | 0 | 0 | 1 | 0 | 0 | 18 | 0 | 0 | 19 |
| 45.1001 - Political Science | 7 | 0 | 0 | 0 | 0 | 0 | 2 | 0 | 0 | 2 |
| 45.1101 - Sociology | 7 | 0 | 0 | 0 | 0 | 0 | 1 | 0 | 0 | 1 |
| 50.0501 - Drama/Theater Arts | 7 | 1 | 0 | 0 | 0 | 0 | 1 | 1 | 0 | 3 |
| 50.0701 - Art | 7 | 0 | 0 | 0 | 0 | 0 | 3 | 1 | 0 | 4 |
| 50.0901 - Music | 7 | 0 | 0 | 0 | 0 | 0 | 8 | 0 | 0 | 8 |
| 50.0902 - Music History & Lit | 7 | 0 | 0 | 0 | 0 | 0 | 0 | 0 | 0 | 0 |
| 51.0201 - Communication Disorders | 7 | 1 | 0 | 1 | 0 | 0 | 17 | 1 | 0 | 20 |
| 51.2306 - Occupational Therapy | 7 | 0 | 0 | 0 | 0 | 0 | 16 | 0 | 0 | 16 |
| 51.2308 - Physical Therapy | 7 | 0 | 1 | 0 | 0 | 0 | 15 | 0 | 0 | 16 |
| 52.0201 - Business Admn & Mgmt | 7 | 5 | 0 | 0 | 2 | 2 | 65 | 7 | 0 | 81 |
| 52.0301 - Accounting | 7 | 1 | 1 | 0 | 0 | 0 | 22 | 0 | 0 | 24 |
| 54.0101 - History, General | 7 | 0 | 0 | 0 | 0 | 0 | 2 | 0 | 0 | 2 |
| | | 21 | 2 | 4 | 4 | 6 | 353 | 21 | 0 | 411 |
| SPECIALIST | | | | | | | | | | |
| 13.0401 - Education Admn | 8 | 0 | 0 | 0 | 0 | 0 | 9 | 0 | 0 | 9 |

COMPLETIONS FROM JULY 1, 2002 TO JUNE 30, 2003
 BY LEVEL - 1st & 2nd MAJORS MALE & FEMALE

| CIP | LEVEL | ALIEN | 1 BLACK | 2 AM INDIAN | 3 ASIAN | 4 HISPANIC | 5 WHITE | 6 UNKN | 7 | TOTAL |
|--|-------|-------|------------|----------------|------------|---------------|------------|-----------|----|-------|
| 13.0501 - Ed/Inst Media Design | 8 | | 0 | 0 | 0 | 0 | 0 | 5 | 0 | 5 |
| 13.1101 - Ed Counseling | 8 | | 0 | 0 | 0 | 0 | 0 | 9 | 0 | 9 |
| 42.0601 - Counseling Psychology | 8 | | 0 | 0 | 0 | 0 | 0 | 0 | 0 | 0 |
| | | | 0 | 0 | 0 | 0 | 0 | 23 | 0 | 23 |
| DOCTORATE | | | | | | | | | | |
| 13.0301 - Curriculum & Instruction | 9 | | 1 | 0 | 0 | 0 | 0 | 4 | 0 | 5 |
| 13.0401 - Education Admn | 9 | | 10 | 0 | 1 | 0 | 0 | 19 | 1 | 31 |
| 13.1101 - Ed Counseling | 9 | | 0 | 0 | 0 | 0 | 0 | 1 | 0 | 1 |
| 23.0101 - English Language & Lit | 9 | | 0 | 0 | 0 | 0 | 0 | 2 | 0 | 2 |
| 26.0101 - Biology, General | 9 | | 0 | 0 | 0 | 0 | 0 | 1 | 0 | 1 |
| 26.0202 - Biomedical Sciences, General | 9 | | 0 | 0 | 0 | 0 | 0 | 0 | 0 | 0 |
| 26.0501 - Medical Microbiology & Bact | 9 | | | | | | | | | |
| 26.0901 - Physiology and Pharmacology | 9 | | 0 | 0 | 0 | 0 | 0 | 0 | 0 | 0 |
| 42.0101 - Psychology | 9 | | 1 | 0 | 0 | 1 | 1 | 6 | 0 | 9 |
| | | | 12 | 0 | 1 | 1 | 1 | 33 | 1 | 49 |
| 1st PROFESSIONAL | | | | | | | | | | |
| 22.0101 - Law (JD) | 10 | | 0 | 2 | 4 | 2 | 0 | 48 | 2 | 58 |
| 51.1201 - Medicine (MD) | 10 | | 0 | 0 | 2 | 0 | 0 | 49 | 1 | 52 |
| | | | 0 | 2 | 6 | 2 | 0 | 97 | 3 | 110 |
| GRAND TOTALS | | | 40 | 7 | 30 | 15 | 12 | 1307 | 49 | 1460 |

COMPLETIONS FROM JULY 1, 2003 TO JUNE 30, 2004
 BY LEVEL - 1st & 2nd MAJORS MALE & FEMALE

| CIP | LEVEL | ALIEN | 1 BLACK | 2 AM INDIAN | 3 ASIAN | 4 HISPANIC | 5 WHITE | 6 UNKN | 7 | TOTAL |
|--|-------|-------|------------|----------------|------------|---------------|------------|-----------|----|-------|
| 31.0101 - Parks Recreation & Leisure | 5 | 5 | 1 | 3 | 0 | 0 | 0 | 14 | 0 | 18 |
| 38.0101 - Philosophy | 5 | 5 | 0 | 0 | 0 | 1 | 0 | 2 | 1 | 4 |
| 40.0501 - Chemistry | 5 | 5 | 0 | 0 | 0 | 0 | 0 | 7 | 2 | 9 |
| 40.0601 - Geology/Earth Science, General | 5 | 5 | 0 | 0 | 0 | 0 | 0 | 1 | 0 | 1 |
| 40.0801 - Physics | 5 | 5 | 0 | 0 | 0 | 0 | 0 | 4 | 1 | 5 |
| 42.0101 - Psychology | 5 | 5 | 1 | 1 | 2 | 0 | 0 | 79 | 4 | 87 |
| 43.0104 - Criminal Justice Studies | 5 | 5 | 1 | 0 | 2 | 0 | 0 | 41 | 1 | 45 |
| 45.0201 - Anthropology | 5 | 5 | 0 | 0 | 0 | 0 | 0 | 5 | 2 | 7 |
| 45.0601 - Economics | 5 | 5 | 0 | 0 | 0 | 1 | 0 | 4 | 0 | 5 |
| 45.1001 - Political Science | 5 | 5 | 0 | 1 | 0 | 0 | 0 | 23 | 4 | 28 |
| 45.1101 - Sociology | 5 | 5 | 1 | 0 | 0 | 0 | 0 | 2 | 0 | 3 |
| 50.0501 - Drama/Theater Arts | 5 | 5 | 0 | 0 | 0 | 0 | 0 | 4 | 0 | 4 |
| 50.0701 - Art | 5 | 5 | 1 | 0 | 0 | 0 | 0 | 23 | 2 | 26 |
| 50.0901 - Music | 5 | 5 | 0 | 0 | 0 | 0 | 0 | 1 | 0 | 1 |
| 50.0903 - Music Performance, General | 5 | 5 | 0 | 0 | 0 | 0 | 0 | 6 | 0 | 6 |
| 51.0201 - Communication Disorders | 5 | 5 | 0 | 0 | 0 | 0 | 0 | 15 | 1 | 16 |
| 51.0602 - Dental Hygienist | 5 | 5 | 0 | 0 | 0 | 0 | 0 | 11 | 0 | 11 |
| 51.0702 - Hospital/Health Servs Admn | 5 | 5 | 0 | 0 | 1 | 0 | 0 | 19 | 0 | 20 |
| 51.0912 - Physician Assistant | 5 | 5 | 0 | 0 | 1 | 0 | 0 | 20 | 0 | 21 |
| 51.1005 - Medical Technology | 5 | 5 | 0 | 0 | 0 | 0 | 0 | 4 | 0 | 4 |
| 51.1501 - Alcohol/Drug Abuse Counseling | 5 | 5 | 1 | 0 | 1 | 0 | 0 | 4 | 0 | 6 |
| 51.1503 - Clinical & Medical Social Work | 5 | 5 | 0 | 0 | 0 | 2 | 0 | 12 | 1 | 15 |
| 52.0201 - Business Admn & Mgmt | 5 | 5 | 0 | 0 | 1 | 1 | 1 | 82 | 2 | 87 |
| 52.0301 - Accounting | 5 | 5 | 1 | 0 | 1 | 1 | 0 | 30 | 0 | 33 |
| 52.0801 - Finance, General | 5 | 5 | 0 | 0 | 0 | 0 | 0 | 13 | 1 | 14 |
| 54.0101 - History - General | 5 | 5 | 0 | 0 | 1 | 0 | 0 | 19 | 1 | 21 |
| | | | 8 | 5 | 13 | 11 | 1 | 715 | 39 | 792 |
| MASTER | | | | | | | | | | |
| 09.0102 - Mass Comm | 7 | 7 | 0 | 0 | 0 | 0 | 0 | 8 | 0 | 8 |
| 11.0101 - Computer Science | 7 | 7 | 12 | 0 | 0 | 0 | 0 | 2 | 0 | 14 |
| 13.0401 - Education Admn | 7 | 7 | 1 | 0 | 1 | 0 | 0 | 16 | 1 | 19 |
| 13.0501 - Ed/Inst Media Design | 7 | 7 | 1 | 0 | 0 | 0 | 1 | 16 | 0 | 18 |

COMPLETIONS FROM JULY 1, 2003 TO JUNE 30, 2004
 BY LEVEL - 1st & 2nd MAJORS MALE & FEMALE

| CIP | LEVEL | ALIEN | 1 BLACK | 2 AM INDIAN | 3 ASIAN | 4 HISPANIC | 5 WHITE | 6 UNKN | 7 TOTAL |
|--|-------|-------|------------|----------------|------------|---------------|------------|-----------|------------|
| 13.1001 - Special Education | 7 | 0 | 1 | 0 | 0 | 0 | 8 | 0 | 9 |
| 13.1101 - Ed Counseling | 7 | 1 | 0 | 0 | 0 | 0 | 20 | 0 | 21 |
| 13.1202 - Elementary Teacher Ed | 7 | 0 | 0 | 0 | 0 | 0 | 16 | 2 | 18 |
| 13.1205 - Secondary Teacher Ed | 7 | 0 | 0 | 0 | 0 | 0 | 11 | 0 | 11 |
| 13.1314 - Physical Ed Teaching | 7 | 0 | 1 | 0 | 1 | 1 | 10 | 0 | 13 |
| 13.1331 - Speech Teacher Ed | 7 | 0 | 0 | 0 | 0 | 0 | 8 | 0 | 8 |
| 23.0101 - English Language & Lit | 7 | 1 | 0 | 0 | 0 | 0 | 10 | 2 | 13 |
| 23.1001 - Communication Studies | 7 | 0 | 0 | 0 | 0 | 0 | 0 | 0 | 0 |
| 24.0101 - Liberal Studies | 7 | 1 | 0 | 1 | 0 | 0 | 11 | 1 | 14 |
| 26.0101 - Biology, General | 7 | 0 | 0 | 0 | 0 | 0 | 3 | 0 | 3 |
| 26.0202 - Biomedical Sciences, General | 7 | 0 | 0 | 0 | 0 | 0 | 3 | 0 | 3 |
| 27.0101 - Mathematics | 7 | 0 | 0 | 0 | 0 | 0 | 2 | 0 | 2 |
| 30.0101 - Biological & Physical Sciences | 7 | 0 | 0 | 0 | 0 | 0 | 1 | 0 | 1 |
| 40.0501 - Chemistry | 7 | 0 | 0 | 0 | 0 | 1 | 0 | 1 | 2 |
| 42.0101 - Psychology | 7 | 0 | 0 | 0 | 0 | 0 | 5 | 1 | 6 |
| 44.0601 - Counseling Psychology | 7 | 0 | 0 | 0 | 0 | 0 | 0 | 0 | 0 |
| 44.0001 - Human Services - MSAS | 7 | 2 | 0 | 2 | 0 | 0 | 15 | 1 | 20 |
| 44.0401 - Public Administration | 7 | 0 | 0 | 0 | 1 | 1 | 10 | 0 | 12 |
| 45.1001 - Political Science | 7 | 0 | 0 | 0 | 0 | 0 | 5 | 0 | 5 |
| 45.1101 - Sociology | 7 | 0 | 0 | 0 | 0 | 0 | 2 | 0 | 2 |
| 50.0501 - Drama/Theater Arts | 7 | 0 | 0 | 0 | 0 | 0 | 4 | 0 | 4 |
| 50.0701 - Art | 7 | 0 | 0 | 0 | 0 | 0 | 2 | 1 | 3 |
| 50.0901 - Music | 7 | 0 | 0 | 0 | 0 | 0 | 5 | 0 | 5 |
| 50.0902 - Music History & Lit | 7 | 0 | 0 | 0 | 0 | 0 | 1 | 0 | 1 |
| 51.0201 - Communication Disorders | 7 | 1 | 0 | 0 | 0 | 1 | 15 | 0 | 17 |
| 51.2306 - Occupational Therapy | 7 | 0 | 0 | 0 | 0 | 0 | 5 | 1 | 6 |
| 51.2308 - Physical Therapy | 7 | 0 | 0 | 1 | 1 | 0 | 14 | 0 | 16 |
| 52.0201 - Business Admn & Mgmt | 7 | 1 | 1 | 1 | 1 | 0 | 60 | 4 | 68 |
| 52.0301 - Accounting | 7 | 2 | 0 | 0 | 1 | 0 | 18 | 1 | 22 |
| 54.0101 - History, General | 7 | 0 | 0 | 0 | 0 | 0 | 8 | 0 | 8 |
| | | 23 | 3 | 6 | 5 | 5 | 314 | 16 | 372 |
| SPECIALIST | | | | | | | | | |
| 13.0401 - Education Admn | 8 | 0 | 0 | 1 | 0 | 0 | 13 | 1 | 15 |

COMPLETIONS FROM JULY 1, 2003 TO JUNE 30, 2004
 BY LEVEL - 1st & 2nd MAJORS MALE & FEMALE

| CIP | LEVEL | ALIEN | 1 BLACK | 2 AM INDIAN | 3 ASIAN | 4 HISPANIC | 5 WHITE | 6 UNKN | 7 TOTAL | |
|--|-------|-------|------------|----------------|------------|---------------|------------|-----------|------------|------|
| 13.0501 - Ed/Inst Media Design | 8 | 0 | 0 | 0 | 0 | 0 | 0 | 3 | 0 | 3 |
| 13.1101 - Ed Counseling | 8 | 0 | 0 | 0 | 1 | 0 | 0 | 6 | 0 | 7 |
| 42.0601 - Counseling Psychology | 8 | 0 | 0 | 0 | 0 | 0 | 0 | 1 | 0 | 1 |
| | | 0 | 0 | 2 | 0 | 0 | 0 | 23 | 1 | 26 |
| DOCTORATE | | | | | | | | | | |
| 13.0301 - Curriculum & Instruction | 9 | 0 | 0 | 0 | 1 | 0 | 0 | 5 | 0 | 6 |
| 13.0401 - Education Admn | 9 | 15 | 0 | 0 | 0 | 1 | 0 | 14 | 6 | 36 |
| 13.1101 - Ed Counseling | 9 | 0 | 0 | 0 | 0 | 0 | 0 | 9 | 0 | 9 |
| 23.0101 - English Language & Lit | 9 | 0 | 0 | 0 | 0 | 0 | 0 | 0 | 0 | 0 |
| 26.0101 - Biology, General | 9 | 0 | 0 | 0 | 0 | 0 | 0 | 0 | 0 | 0 |
| 26.0202 - Biomedical Sciences, General | 9 | 0 | 0 | 0 | 0 | 0 | 0 | 1 | 0 | 1 |
| 26.0501 - Medical Microbiology & Bact | 9 | | | | | | | | | |
| 26.0901 - Physiology and Pharmacology | 9 | 0 | 0 | 0 | 0 | 0 | 0 | 0 | 0 | 0 |
| 42.0101 - Psychology | 9 | 1 | 0 | 1 | 0 | 1 | 1 | 4 | 1 | 8 |
| | | 16 | 0 | 2 | 1 | 1 | 1 | 33 | 7 | 60 |
| 1st PROFESSIONAL | | | | | | | | | | |
| 22.0101 - Law (JD) | 10 | 1 | 1 | 5 | 0 | 1 | 1 | 66 | 3 | 77 |
| 51.1201 - Medicine (MD) | 10 | 0 | 0 | 1 | 0 | 0 | 0 | 48 | 0 | 49 |
| | | 1 | 1 | 6 | 0 | 1 | 1 | 114 | 3 | 126 |
| GRAND TOTALS | | | 50 | 10 | 31 | 19 | 11 | 1408 | 71 | 1600 |

COMPLETIONS FROM JULY 1, 2004 TO JUNE 30, 2005
 BY LEVEL - 1st & 2nd MAJORS MALE & FEMALE

| CIP | LEVEL | ALIEN | 1 BLACK | 2 AM INDIAN | 3 ASIAN | 4 HISPANIC | 5 WHITE | 6 UNKN | 7 TOTAL | |
|--------------------------------------|-------|-------|------------|----------------|------------|---------------|------------|-----------|------------|-----|
| ASSOCIATE | | | | | | | | | | |
| 24.0102 - General Studies | 3 | 0 | 0 | 0 | 0 | 0 | 0 | 4 | 1 | 5 |
| 51.0602 - Dental Hygienist | 3 | 0 | 0 | 0 | 0 | 0 | 0 | 31 | 0 | 31 |
| 51.1601 - Nursing (RN) | 3 | 0 | 0 | 1 | 1 | 0 | 1 | 201 | 7 | 211 |
| | | 0 | 1 | 1 | 0 | 1 | 236 | 8 | 247 | |
| BACHELOR | | | | | | | | | | |
| 05.0202 - Native Am Studies | 5 | 0 | 0 | 0 | 0 | 0 | 0 | 0 | 0 | 0 |
| 09.0102 - Mass Comm | 5 | 2 | 0 | 0 | 1 | 0 | 1 | 54 | 2 | 60 |
| 11.0101 - Computer Science | 5 | 4 | 0 | 0 | 0 | 0 | 0 | 8 | 0 | 12 |
| 13.1001 - Special Education | 5 | 0 | 0 | 0 | 0 | 0 | 1 | 10 | 0 | 11 |
| 13.1202 - Elementary Teacher Ed | 5 | 0 | 0 | 0 | 0 | 0 | 1 | 42 | 1 | 44 |
| 13.1302 - Art Teacher Education | 5 | 0 | 0 | 0 | 0 | 0 | 0 | 2 | 0 | 2 |
| 13.1305 - English Teacher Education | 5 | 0 | 0 | 0 | 0 | 0 | 0 | 6 | 0 | 6 |
| 13.1311 - Math Teacher Education | 5 | 0 | 0 | 0 | 0 | 0 | 0 | 5 | 0 | 5 |
| 13.1312 - Music Teacher Education | 5 | 0 | 0 | 0 | 0 | 0 | 0 | 9 | 0 | 9 |
| 13.1313 - Social Science Teaching | 5 | 0 | 0 | 0 | 0 | 0 | 0 | 1 | 0 | 1 |
| 13.1314 - Physical Ed Teaching | 5 | 0 | 0 | 0 | 0 | 0 | 0 | 5 | 2 | 7 |
| 13.1316 - Earth Science Teaching | 5 | 0 | 0 | 0 | 0 | 0 | 0 | 0 | 0 | 0 |
| 13.1317 - Political Science Teaching | 5 | 0 | 0 | 0 | 0 | 0 | 0 | 0 | 0 | 0 |
| 13.1322 - Biology Teacher Education | 5 | 0 | 0 | 0 | 0 | 0 | 0 | 1 | 0 | 1 |
| 13.1328 - History Teacher Education | 5 | 0 | 0 | 0 | 0 | 0 | 0 | 1 | 0 | 1 |
| 13.1330 - Spanish Teacher Ed | 5 | 0 | 0 | 0 | 0 | 0 | 0 | 1 | 0 | 1 |
| 13.1331 - Speech Teacher Ed | 5 | 0 | 0 | 0 | 0 | 0 | 0 | 5 | 0 | 5 |
| 16.0501 - German Language & Lit | 5 | 0 | 0 | 0 | 0 | 0 | 1 | 3 | 1 | 5 |
| 16.0901 - French Language & Lit | 5 | 0 | 0 | 0 | 0 | 0 | 0 | 0 | 0 | 0 |
| 16.0905 - Spanish Language & Lit | 5 | 0 | 0 | 1 | 0 | 0 | 0 | 9 | 0 | 10 |
| 23.0101 - English Language & Lit | 5 | 0 | 0 | 0 | 0 | 0 | 0 | 20 | 0 | 20 |
| 23.1001 - Communication Studies | 5 | 0 | 0 | 0 | 0 | 0 | 0 | 0 | 0 | 0 |
| 24.0101 - Liberal Studies | 5 | 0 | 0 | 0 | 1 | 0 | 0 | 6 | 1 | 8 |
| 26.0101 - Biology, General | 5 | 0 | 0 | 1 | 0 | 0 | 0 | 47 | 1 | 49 |
| 27.0101 - Mathematics | 5 | 0 | 0 | 0 | 0 | 0 | 0 | 10 | 0 | 10 |
| 30.0201 - International Studies | 5 | 0 | 0 | 0 | 0 | 0 | 0 | 1 | 1 | 2 |

COMPLETIONS FROM JULY 1, 2004 TO JUNE 30, 2005
 BY LEVEL - 1st & 2nd MAJORS MALE & FEMALE

| CIP | LEVEL | ALIEN | 1 BLACK | 2 AM INDIAN | 3 ASIAN | 4 HISPANIC | 5 WHITE | 6 UNKN | 7 TOTAL | |
|--|-------|-------|------------|----------------|------------|---------------|------------|-----------|------------|-----|
| 31.0101 - Parks Recreation & Leisure | 5 | 0 | 1 | 0 | 0 | 1 | 17 | 0 | 19 | |
| 38.0101 - Philosophy | 5 | 0 | 0 | 0 | 0 | 0 | 0 | 0 | 0 | |
| 40.0501 - Chemistry | 5 | 0 | 1 | 0 | 0 | 0 | 8 | 0 | 9 | |
| 40.0601 - Geology/Earth Science, General | 5 | 0 | 0 | 0 | 0 | 0 | 2 | 0 | 2 | |
| 40.0801 - Physics | 5 | 1 | 0 | 0 | 0 | 0 | 2 | 0 | 3 | |
| 42.0101 - Psychology | 5 | 0 | 0 | 0 | 0 | 3 | 74 | 3 | 80 | |
| 43.0104 - Criminal Justice Studies | 5 | 0 | 0 | 2 | 0 | 2 | 48 | 3 | 55 | |
| 45.0201 - Anthropology | 5 | 0 | 0 | 0 | 0 | 0 | 6 | 0 | 6 | |
| 45.0601 - Economics | 5 | 0 | 0 | 0 | 0 | 0 | 8 | 0 | 8 | |
| 45.1001 - Political Science | 5 | 0 | 0 | 0 | 0 | 0 | 26 | 3 | 29 | |
| 45.1101 - Sociology | 5 | 0 | 0 | 1 | 0 | 0 | 12 | 1 | 14 | |
| 50.0501 - Drama/Theater Arts | 5 | 0 | 0 | 0 | 0 | 0 | 9 | 1 | 10 | |
| 50.0701 - Art | 5 | 0 | 0 | 1 | 0 | 0 | 5 | 0 | 6 | |
| 50.0901 - Music | 5 | 0 | 0 | 0 | 0 | 0 | 0 | 0 | 0 | |
| 50.0903 - Music Performance, General | 5 | 0 | 0 | 0 | 0 | 1 | 9 | 1 | 11 | |
| 51.0201 - Communication Disorders | 5 | 0 | 0 | 0 | 0 | 0 | 15 | 0 | 15 | |
| 51.0602 - Dental Hygienist | 5 | 0 | 0 | 0 | 0 | 0 | 17 | 0 | 17 | |
| 51.0702 - Hospital/Health Servs Admn | 5 | 0 | 0 | 0 | 0 | 0 | 17 | 0 | 17 | |
| 51.0912 - Physician Assistant | 5 | 0 | 0 | 0 | 1 | 0 | 14 | 1 | 16 | |
| 51.1005 - Medical Technology | 5 | 0 | 0 | 0 | 0 | 0 | 6 | 0 | 6 | |
| 51.1501 - Alcohol/Drug Abuse Counseling | 5 | 0 | 0 | 0 | 0 | 0 | 6 | 0 | 6 | |
| 51.1503 - Clinical & Medical Social Work | 5 | 0 | 0 | 0 | 0 | 0 | 19 | 2 | 21 | |
| 52.0201 - Business Admn & Mgmt | 5 | 0 | 2 | 0 | 0 | 1 | 74 | 1 | 78 | |
| 52.0301 - Accounting | 5 | 0 | 0 | 0 | 0 | 1 | 27 | 1 | 29 | |
| 52.0801 - Finance, General | 5 | 1 | 0 | 0 | 0 | 0 | 19 | 0 | 20 | |
| 54.0101 - History - General | 5 | 0 | 0 | 0 | 0 | 0 | 16 | 0 | 16 | |
| | | | 8 | 6 | 6 | 1 | 13 | 702 | 26 | 762 |
| MASTER | | | | | | | | | | |
| 09.0102 - Mass Comm | 7 | 0 | 0 | 0 | 0 | 0 | 1 | 0 | 1 | |
| 11.0101 - Computer Science | 7 | 7 | 0 | 0 | 0 | 0 | 7 | 0 | 14 | |
| 13.0401 - Education Admn | 7 | 0 | 1 | 0 | 0 | 0 | 17 | 3 | 21 | |
| 13.0501 - Ed/Inst Media Design | 7 | 1 | 0 | 0 | 0 | 0 | 9 | 2 | 12 | |

COMPLETIONS FROM JULY 1, 2004 TO JUNE 30, 2005
 BY LEVEL - 1st & 2nd MAJORS MALE & FEMALE

| CIP | LEVEL | ALIEN | 1 BLACK | 2 AM INDIAN | 3 ASIAN | 4 HISPANIC | 5 WHITE | 6 UNKN | 7 TOTAL | |
|--|-------|-------|------------|----------------|------------|---------------|------------|-----------|------------|-----|
| 13.1001 - Special Education | 7 | 7 | 0 | 0 | 0 | 0 | 0 | 18 | 0 | 18 |
| 13.1101 - Ed Counseling | 7 | 7 | 1 | 0 | 1 | 0 | 0 | 17 | 0 | 19 |
| 13.1202 - Elementary Teacher Ed | 7 | 7 | 0 | 0 | 0 | 0 | 0 | 11 | 0 | 11 |
| 13.1205 - Secondary Teacher Ed | 7 | 7 | 0 | 0 | 0 | 0 | 0 | 12 | 0 | 12 |
| 13.1314 - Physical Ed Teaching | 7 | 7 | 2 | 2 | 0 | 0 | 0 | 17 | 1 | 22 |
| 13.1331 - Speech Teacher Ed | 7 | 7 | 0 | 0 | 0 | 0 | 0 | 3 | 0 | 3 |
| 23.0101 - English Language & Lit | 7 | 7 | 1 | 0 | 0 | 0 | 0 | 11 | 1 | 13 |
| 23.1001 - Communication Studies | 7 | 7 | 0 | 0 | 0 | 0 | 0 | 0 | 0 | 0 |
| 24.0101 - Liberal Studies | 7 | 7 | 0 | 0 | 0 | 0 | 1 | 8 | 1 | 10 |
| 26.0101 - Biology, General | 7 | 7 | 0 | 0 | 0 | 0 | 0 | 12 | 0 | 12 |
| 26.0202 - Biomedical Sciences, General | 7 | 7 | 1 | 0 | 0 | 0 | 0 | 2 | 0 | 3 |
| 27.0101 - Mathematics | 7 | 7 | 0 | 0 | 0 | 0 | 0 | 4 | 0 | 4 |
| 30.0101 - Biological & Physical Sciences | 7 | 7 | 0 | 0 | 0 | 0 | 0 | 1 | 0 | 1 |
| 40.0501 - Chemistry | 7 | 7 | 1 | 0 | 0 | 0 | 0 | 0 | 0 | 1 |
| 42.0101 - Psychology | 7 | 7 | 1 | 0 | 1 | 0 | 0 | 7 | 1 | 10 |
| 44.0601 - Counseling Psychology | 7 | 7 | 0 | 0 | 0 | 0 | 0 | 1 | 0 | 1 |
| 44.0001 - Human Services - MSAS | 7 | 7 | 2 | 1 | 1 | 0 | 3 | 45 | 1 | 53 |
| 44.0401 - Public Administration | 7 | 7 | 0 | 0 | 0 | 0 | 0 | 14 | 0 | 14 |
| 45.1001 - Political Science | 7 | 7 | 0 | 1 | 0 | 0 | 0 | 5 | 2 | 8 |
| 45.1101 - Sociology | 7 | 7 | 0 | 1 | 0 | 0 | 0 | 0 | 0 | 1 |
| 50.0501 - Drama/Theater Arts | 7 | 7 | 0 | 0 | 0 | 0 | 0 | 5 | 0 | 5 |
| 50.0701 - Art | 7 | 7 | 1 | 0 | 0 | 0 | 0 | 4 | 0 | 5 |
| 50.0901 - Music | 7 | 7 | 1 | 0 | 0 | 0 | 0 | 9 | 0 | 10 |
| 50.0902 - Music History & Lit | 7 | 7 | 1 | 0 | 0 | 0 | 0 | 1 | 0 | 2 |
| 51.0201 - Communication Disorders | 7 | 7 | 0 | 0 | 0 | 1 | 0 | 20 | 0 | 21 |
| 51.2306 - Occupational Therapy | 7 | 7 | 0 | 0 | 0 | 0 | 0 | 7 | 2 | 9 |
| 51.2308 - Physical Therapy | 7 | 7 | 0 | 0 | 0 | 0 | 0 | 16 | 1 | 17 |
| 52.0201 - Business Admn & Mgmt | 7 | 7 | 2 | 0 | 1 | 1 | 1 | 64 | 5 | 74 |
| 52.0301 - Accounting | 7 | 7 | 1 | 0 | 0 | 0 | 0 | 18 | 1 | 20 |
| 54.0101 - History, General | 7 | 7 | 0 | 0 | 0 | 0 | 0 | 3 | 0 | 3 |
| | | | 23 | 6 | 4 | 2 | 5 | 369 | 21 | 430 |
| SPECIALIST | | | | | | | | | | |
| 13.0401 - Education Admn | 8 | 8 | 0 | 0 | 0 | 0 | 0 | 13 | 2 | 15 |

COMPLETIONS FROM JULY 1, 2004 TO JUNE 30, 2005
 BY LEVEL - 1st & 2nd MAJORS MALE & FEMALE

| CIP | LEVEL | ALIEN | 1 BLACK | 2 AM INDIAN | 3 ASIAN | 4 HISPANIC | 5 WHITE | 6 UNKN | 7 TOTAL | |
|--|-------|-------|------------|----------------|------------|---------------|------------|-----------|------------|------|
| 13.0501 - Ed/Inst Media Design | 8 | 0 | 0 | 0 | 0 | 0 | 0 | 2 | 0 | 2 |
| 13.1101 - Ed Counseling | 8 | 0 | 0 | 0 | 0 | 1 | 0 | 5 | 0 | 6 |
| 42.0601 - Counseling Psychology | 8 | 0 | 0 | 0 | 0 | 0 | 0 | 1 | 0 | 1 |
| | | 0 | 0 | 0 | 0 | 1 | 0 | 21 | 2 | 24 |
| DOCTORATE | | | | | | | | | | |
| 13.0301 - Curriculum & Instruction | 9 | 0 | 0 | 0 | 0 | 0 | 0 | 6 | 0 | 6 |
| 13.0401 - Education Admn | 9 | 7 | 0 | 0 | 0 | 0 | 0 | 22 | 3 | 32 |
| 13.1101 - Ed Counseling | 9 | 0 | 0 | 0 | 0 | 0 | 0 | 2 | 1 | 3 |
| 23.0101 - English Language & Lit | 9 | 0 | 0 | 0 | 0 | 0 | 0 | 1 | 1 | 2 |
| 26.0101 - Biology, General | 9 | 2 | 0 | 0 | 0 | 0 | 0 | 1 | 0 | 3 |
| 26.0202 - Biomedical Sciences, General | 9 | 0 | 0 | 0 | 0 | 0 | 0 | 1 | 0 | 1 |
| 26.0900 - Physiology and Pharmacology | 9 | 1 | 0 | 0 | 0 | 0 | 0 | 0 | 0 | 1 |
| 42.0101 - Psychology | 9 | 0 | 0 | 0 | 0 | 0 | 0 | 6 | 0 | 6 |
| | | 10 | 0 | 0 | 0 | 0 | 0 | 39 | 5 | 54 |
| 1st PROFESSIONAL | | | | | | | | | | |
| 22.0101 - Law (JD) | 10 | 1 | 1 | 0 | 0 | 4 | 2 | 76 | 0 | 84 |
| 51.1201 - Medicine (MD) | 10 | 0 | 0 | 0 | 0 | 1 | 0 | 46 | 1 | 48 |
| | | 1 | 1 | 0 | 0 | 5 | 2 | 122 | 1 | 132 |
| GRAND TOTALS | | | 42 | 14 | 11 | 9 | 21 | 1489 | 63 | 1649 |

COMPLETIONS FROM JULY 1, 2005 TO JUNE 30, 2006
 BY LEVEL - ALL MAJORS MALE & FEMALE

| CIP | LEVEL | ALIEN | 1 BLACK | 2 AM INDIAN | 3 ASIAN | 4 HISPANIC | 5 WHITE | 6 UNKN | 7 | TOTAL |
|--------------------------------------|-------|-------|------------|----------------|------------|---------------|------------|-----------|---|-------|
| ASSOCIATE | | | | | | | | | | |
| 24.0102 - General Studies | 3 | 0 | 0 | 0 | 0 | 0 | 1 | 8 | 1 | 10 |
| 51.0602 - Dental Hygienist | 3 | 0 | 0 | 0 | 0 | 0 | 0 | 23 | 2 | 25 |
| 51.1601 - Nursing (RN) | 3 | 0 | 4 | 1 | 0 | 1 | 247 | 6 | 6 | 259 |
| | | 0 | 4 | 1 | 0 | 2 | 278 | 9 | | 294 |
| BACHELOR | | | | | | | | | | |
| 05.0202 - Native Am Studies | 5 | 0 | 0 | 3 | 0 | 0 | 0 | 2 | 1 | 6 |
| 09.0102 - Mass Comm | 5 | 1 | 0 | 0 | 1 | 2 | 45 | 2 | | 51 |
| 11.0101 - Computer Science | 5 | 1 | 0 | 1 | 0 | 0 | 10 | 2 | | 14 |
| 13.1001 - Special Education | 5 | 0 | 0 | 0 | 0 | 0 | 5 | 0 | | 5 |
| 13.1202 - Elementary Teacher Ed | 5 | 0 | 0 | 0 | 0 | 2 | 42 | 1 | | 45 |
| 13.1302 - Art Teacher Education | 5 | 0 | 0 | 0 | 0 | 0 | 3 | 0 | | 3 |
| 13.1305 - English Teacher Education | 5 | 0 | 0 | 0 | 0 | 0 | 5 | 0 | | 5 |
| 13.1311 - Math Teacher Education | 5 | 0 | 0 | 0 | 0 | 0 | 2 | 0 | | 2 |
| 13.1312 - Music Teacher Education | 5 | 0 | 0 | 0 | 0 | 0 | 8 | 0 | | 8 |
| 13.1313 - Social Science Teaching | 5 | 0 | 0 | 0 | 0 | 0 | 0 | 0 | | 0 |
| 13.1314 - Physical Ed Teaching | 5 | 0 | 0 | 0 | 0 | 0 | 5 | 0 | | 5 |
| 13.1316 - Earth Science Teaching | 5 | 0 | 0 | 0 | 0 | 0 | 0 | 0 | | 0 |
| 13.1317 - Political Science Teaching | 5 | 0 | 0 | 0 | 0 | 0 | 0 | 0 | | 0 |
| 13.1322 - Biology Teacher Education | 5 | 0 | 0 | 0 | 0 | 0 | 3 | 0 | | 3 |
| 13.1328 - History Teacher Education | 5 | 0 | 0 | 0 | 0 | 0 | 2 | 0 | | 2 |
| 13.1330 - Spanish Teacher Ed | 5 | 0 | 0 | 0 | 0 | 0 | 3 | 1 | | 4 |
| 13.1331 - Speech Teacher Ed | 5 | 0 | 0 | 0 | 0 | 1 | 3 | 0 | | 4 |
| 16.0501 - German Language & Lit | 5 | 0 | 0 | 0 | 0 | 0 | 0 | 0 | | 0 |
| 16.0901 - French Language & Lit | 5 | 0 | 0 | 0 | 0 | 0 | 1 | 0 | | 1 |
| 16.0905 - Spanish Language & Lit | 5 | 0 | 0 | 0 | 0 | 0 | 6 | 0 | | 6 |
| 23.0101 - English Language & Lit | 5 | 0 | 1 | 1 | 0 | 0 | 25 | 1 | | 28 |
| 23.1001 - Communication Studies | 5 | 0 | 0 | 0 | 0 | 0 | 0 | 0 | | 0 |
| 24.0101 - Liberal Studies | 5 | 0 | 0 | 0 | 0 | 0 | 1 | 0 | | 1 |
| 26.0101 - Biology, General | 5 | 0 | 0 | 0 | 0 | 0 | 55 | 0 | | 55 |
| 27.0101 - Mathematics | 5 | 0 | 0 | 0 | 0 | 0 | 7 | 1 | | 8 |
| 30.0201 - International Studies | 5 | 0 | 0 | 0 | 0 | 0 | 3 | 1 | | 4 |

COMPLETIONS FROM JULY 1, 2005 TO JUNE 30, 2006
 BY LEVEL - All MAJORS MALE & FEMALE

| CIP | LEVEL | ALIEN | 1 BLACK | 2 AM INDIAN | 3 ASIAN | 4 HISPANIC | 5 WHITE | 6 UNKN | 7 TOTAL | |
|--|-------|-------|------------|----------------|------------|---------------|------------|-----------|------------|-----|
| 31.0101 - Parks Recreation & Leisure | 5 | | 1 | 0 | 0 | 0 | 0 | 22 | 0 | 23 |
| 38.0101 - Philosophy | 5 | | 0 | 0 | 0 | 0 | 0 | 3 | 1 | 4 |
| 40.0501 - Chemistry | 5 | | 0 | 0 | 0 | 0 | 0 | 13 | 0 | 13 |
| 40.0601 - Geology/Earth Science, General | 5 | | 0 | 0 | 0 | 0 | 0 | 6 | 1 | 7 |
| 40.0801 - Physics | 5 | | 0 | 0 | 0 | 1 | 0 | 1 | 1 | 3 |
| 42.0101 - Psychology | 5 | | 0 | 1 | 0 | 0 | 2 | 95 | 3 | 101 |
| 43.0104 - Criminal Justice Studies | 5 | | 0 | 0 | 0 | 0 | 3 | 53 | 5 | 61 |
| 45.0201 - Anthropology | 5 | | 0 | 0 | 0 | 0 | 0 | 8 | 0 | 8 |
| 45.0601 - Economics | 5 | | 0 | 0 | 0 | 0 | 0 | 15 | 3 | 18 |
| 45.1001 - Political Science | 5 | | 0 | 0 | 1 | 0 | 1 | 31 | 2 | 35 |
| 45.1101 - Sociology | 5 | | 0 | 0 | 0 | 0 | 0 | 4 | 0 | 4 |
| 50.0501 - Drama/Theater Arts | 5 | | 0 | 0 | 0 | 0 | 0 | 4 | 1 | 5 |
| 50.0701 - Art | 5 | | 0 | 0 | 0 | 0 | 0 | 10 | 0 | 10 |
| 50.0901 - Music | 5 | | 0 | 0 | 0 | 0 | 0 | 4 | 1 | 5 |
| 50.0903 - Music Performance, General | 5 | | 0 | 0 | 0 | 0 | 0 | 7 | 0 | 7 |
| 51.0201 - Communication Disorders | 5 | | 0 | 0 | 0 | 0 | 0 | 16 | 0 | 16 |
| 51.0602 - Dental Hygienist | 5 | | 0 | 0 | 0 | 0 | 0 | 20 | 2 | 22 |
| 51.0702 - Hospital/Health Servs Admn | 5 | | 0 | 0 | 0 | 0 | 0 | 11 | 0 | 11 |
| 51.0912 - Physician Assistant | 5 | | 0 | 0 | 1 | 0 | 0 | 11 | 0 | 12 |
| 51.1005 - Medical Technology | 5 | | 0 | 0 | 0 | 0 | 0 | 4 | 0 | 4 |
| 51.1501 - Alcohol/Drug Abuse Counseling | 5 | | 0 | 0 | 0 | 0 | 0 | 9 | 1 | 10 |
| 51.1503 - Clinical & Medical Social Work | 5 | | 0 | 0 | 1 | 0 | 0 | 17 | 2 | 20 |
| 52.0201 - Business Admn & Mgmt | 5 | | 0 | 0 | 1 | 0 | 1 | 47 | 3 | 52 |
| 52.0301 - Accounting | 5 | | 2 | 0 | 0 | 0 | 0 | 49 | 0 | 51 |
| 52.0801 - Finance, General | 5 | | 0 | 0 | 0 | 0 | 0 | 28 | 0 | 28 |
| 521401 - Marketing/Marketing Management | 5 | | 0 | 0 | 0 | 0 | 0 | 22 | 0 | 22 |
| 54.0101 - History - General | 5 | | 0 | 0 | 1 | 0 | 0 | 25 | 4 | 30 |
| | | | 5 | 2 | 10 | 2 | 12 | 771 | 40 | 842 |
| MASTER | | | | | | | | | | |
| 09.0102 - Mass Comm | 7 | | 0 | 0 | 0 | 0 | 0 | 0 | 0 | 0 |
| 11.0101 - Computer Science | 7 | | 7 | 0 | 0 | 0 | 0 | 2 | 1 | 10 |
| 13.0401 - Education Admn | 7 | | 1 | 1 | 0 | 0 | 0 | 20 | 2 | 24 |

COMPLETIONS FROM JULY 1, 2005 TO JUNE 30, 2006
 BY LEVEL - ALL MAJORS MALE & FEMALE

| CIP | LEVEL | ALIEN | 1 BLACK | 2 AM INDIAN | 3 ASIAN | 4 HISPANIC | 5 WHITE | 6 UNKN | 7 TOTAL | |
|--|-------|-------|------------|----------------|------------|---------------|------------|-----------|------------|-----|
| 13.0501 - Ed/Inst Media Design | 7 | 7 | 0 | 0 | 0 | 0 | 0 | 14 | 0 | 14 |
| 13.1001 - Special Education | 7 | 7 | 0 | 0 | 0 | 0 | 0 | 18 | 0 | 18 |
| 13.1101 - Ed Counseling | 7 | 7 | 0 | 0 | 0 | 0 | 0 | 0 | 0 | 0 |
| 13.1202 - Elementary Teacher Ed | 7 | 7 | 0 | 0 | 0 | 0 | 0 | 22 | 0 | 22 |
| 13.1205 - Secondary Teacher Ed | 7 | 7 | 0 | 0 | 1 | 0 | 0 | 12 | 0 | 13 |
| 13.1314 - Physical Ed Teaching | 7 | 7 | 1 | 2 | 0 | 0 | 0 | 13 | 2 | 18 |
| 13.1331 - Speech Teacher Ed | 7 | 7 | 0 | 0 | 0 | 0 | 0 | 4 | 0 | 4 |
| 23.0101 - English Language & Lit | 7 | 7 | 1 | 0 | 0 | 0 | 0 | 6 | 1 | 8 |
| 23.1001 - Communication Studies | 7 | 7 | 0 | 0 | 0 | 0 | 0 | 0 | 0 | 0 |
| 24.0101 - Liberal Studies | 7 | 7 | 1 | 1 | 1 | 0 | 0 | 3 | 0 | 6 |
| 26.0101 - Biology, General | 7 | 7 | 0 | 0 | 0 | 0 | 0 | 5 | 0 | 5 |
| 26.0202 - Biomedical Sciences, General | 7 | 7 | 2 | 0 | 0 | 0 | 0 | 1 | 0 | 3 |
| 27.0101 - Mathematics | 7 | 7 | 0 | 0 | 0 | 0 | 0 | 3 | 0 | 3 |
| 30.0101 - Biological & Physical Sciences | 7 | 7 | 0 | 0 | 0 | 0 | 0 | 3 | 0 | 3 |
| 40.0501 - Chemistry | 7 | 7 | 4 | 0 | 0 | 0 | 0 | 1 | 0 | 5 |
| 42.0101 - Psychology | 7 | 7 | 0 | 0 | 1 | 0 | 0 | 10 | 0 | 11 |
| 42.0601 - Counseling Psychology | 7 | 7 | 0 | 0 | 1 | 0 | 1 | 23 | 1 | 26 |
| 440001 - Human Services, General MSAS | 7 | 7 | 1 | 1 | 1 | 0 | 0 | 29 | 4 | 36 |
| 44.0401 - Public Administration | 7 | 7 | 0 | 1 | 0 | 1 | 0 | 16 | 1 | 19 |
| 45.1001 - Political Science | 7 | 7 | 0 | 0 | 0 | 0 | 0 | 4 | 0 | 4 |
| 45.1101 - Sociology | 7 | 7 | 0 | 0 | 0 | 0 | 0 | 1 | 0 | 1 |
| 50.0501 - Drama/Theater Arts | 7 | 7 | 0 | 0 | 0 | 0 | 0 | 4 | 0 | 4 |
| 50.0701 - Art | 7 | 7 | 0 | 0 | 0 | 0 | 0 | 1 | 0 | 1 |
| 50.0901 - Music | 7 | 7 | 0 | 0 | 0 | 0 | 0 | 5 | 0 | 5 |
| 50.0902 - Music History & Lit | 7 | 7 | 0 | 0 | 0 | 0 | 0 | 0 | 0 | 0 |
| 51.0201 - Communication Disorders | 7 | 7 | 2 | 0 | 0 | 0 | 0 | 26 | 0 | 28 |
| 510910 - Physician Assistant | 7 | 7 | 0 | 0 | 0 | 0 | 0 | 7 | 0 | 7 |
| 51.2306 - Occupational Therapy | 7 | 7 | 0 | 0 | 0 | 1 | 0 | 9 | 1 | 11 |
| 51.2308 - Physical Therapy | 7 | 7 | 0 | 0 | 0 | 0 | 0 | 15 | 0 | 15 |
| 52.0201 - Business Admn & Mgmt | 7 | 7 | 6 | 0 | 1 | 0 | 0 | 42 | 3 | 52 |
| 52.0301 - Accounting | 7 | 7 | 3 | 0 | 0 | 0 | 0 | 35 | 1 | 39 |
| 54.0101 - History, General | 7 | 7 | 0 | 0 | 0 | 0 | 0 | 7 | 0 | 7 |
| | | | 29 | 6 | 6 | 2 | 1 | 361 | 17 | 422 |

COMPLETIONS FROM JULY 1, 2005 TO JUNE 30, 2006
 BY LEVEL - ALL MAJORS MALE & FEMALE

| CIP | LEVEL | ALIEN | 1 BLACK | 2 AM INDIAN | 3 ASIAN | 4 HISPANIC | 5 WHITE | 6 UNKN | 7 | TOTAL |
|--|-------|-------|------------|----------------|------------|---------------|------------|-----------|----|-------|
| SPECIALIST | | | | | | | | | | |
| 13.0301 - Curriculum & Instruction | 8 | 0 | 0 | 0 | 0 | 0 | 0 | 2 | 0 | 2 |
| 13.0401 - Education Admn | 8 | 0 | 0 | 0 | 0 | 0 | 0 | 10 | 0 | 10 |
| 13.0501 - Ed/Inst Media Design | 8 | 2 | 0 | 0 | 0 | 0 | 0 | 1 | 0 | 3 |
| 13.1101 - Ed Counseling | 8 | 0 | 0 | 0 | 0 | 0 | 0 | 0 | 0 | 0 |
| 13.1201 - Secondary Education & Teaching | 8 | 0 | 0 | 0 | 0 | 0 | 0 | 1 | 0 | 1 |
| 42.0601 - Counseling Psychology | 8 | 0 | 0 | 0 | 0 | 0 | 0 | 10 | 1 | 11 |
| | | 2 | 0 | 0 | 0 | 0 | 0 | 24 | 1 | 27 |
| DOCTORATE | | | | | | | | | | |
| 13.0301 - Curriculum & Instruction | 9 | 1 | 0 | 0 | 0 | 0 | 0 | 6 | 2 | 9 |
| 13.0401 - Education Admn | 9 | 6 | 0 | 0 | 0 | 0 | 0 | 14 | 4 | 24 |
| 13.1101 - Ed Counseling | 9 | 0 | 0 | 0 | 0 | 0 | 0 | 0 | 0 | 0 |
| 23.0101 - English Language & Lit | 9 | 2 | 0 | 0 | 0 | 0 | 0 | 1 | 0 | 3 |
| 26.0101 - Biology, General | 9 | 0 | 0 | 0 | 0 | 0 | 0 | 3 | 0 | 3 |
| 26.0202 - Biomedical Sciences, General | 9 | 1 | 0 | 0 | 0 | 0 | 0 | 3 | 0 | 4 |
| 26.0900 - Physiology and Pharmacology | 9 | 0 | 0 | 0 | 0 | 0 | 0 | 0 | 0 | 0 |
| 42.0101 - Psychology | 9 | 0 | 0 | 0 | 0 | 0 | 1 | 6 | 1 | 8 |
| 42.0601 - Counseling Psychology | 9 | 0 | 0 | 0 | 0 | 0 | 0 | 1 | 0 | 1 |
| | | 10 | 0 | 0 | 0 | 0 | 1 | 34 | 7 | 52 |
| 1st PROFESSIONAL | | | | | | | | | | |
| 22.0101 - Law (JD) | 10 | 1 | 0 | 1 | 1 | 1 | 1 | 79 | 2 | 85 |
| 51.1201 - Medicine (MD) | 10 | 0 | 0 | 4 | 0 | 0 | 0 | 46 | 1 | 51 |
| | | 1 | 0 | 5 | 1 | 1 | 1 | 125 | 3 | 136 |
| GRAND TOTALS | | | | | | | | | | |
| | | | 47 | 12 | 22 | 5 | 17 | 1593 | 77 | 1773 |

COMPLETIONS FROM JULY 1, 2006 TO JUNE 30, 2007
 BY LEVEL - ALL MAJORS MALE & FEMALE

| CIP | LEVEL | ALIEN | 1 BLACK | 2 AM INDIAN | 3 ASIAN | 4 HISPANIC | 5 WHITE | 6 UNKN | 7 TOTAL |
|--------------------------------------|-------|-------|------------|----------------|------------|---------------|------------|-----------|------------|
| ASSOCIATE | | | | | | | | | |
| 24.0102 - General Studies | 3 | 0 | 0 | 1 | 0 | 0 | 6 | 1 | 8 |
| 51.0602 - Dental Hygienist | 3 | 0 | 0 | 0 | 0 | 1 | 32 | 0 | 33 |
| 51.1601 - Nursing (RN) | 3 | 0 | 3 | 3 | 1 | 1 | 260 | 10 | 278 |
| | | 0 | 3 | 4 | 1 | 2 | 298 | 11 | 319 |
| 44.0400 - Public Administration | 4 | 0 | 0 | 0 | 0 | 0 | 13 | 0 | 13 |
| 51.0700 - Hospital and Health Care | 4 | 0 | 0 | 0 | 0 | 0 | 4 | 0 | 4 |
| | | 0 | 0 | 0 | 0 | 0 | 17 | 0 | 17 |
| BACHELOR | | | | | | | | | |
| 05.0202 - Native Am Studies | 5 | 0 | 0 | 1 | 0 | 0 | 0 | 0 | 1 |
| 09.0102 - Mass Comm | 5 | 0 | 0 | 1 | 1 | 1 | 50 | 1 | 54 |
| 11.0101 - Computer Science | 5 | 0 | 0 | 0 | 0 | 0 | 7 | 2 | 9 |
| 13.1001 - Special Education | 5 | 0 | 0 | 0 | 0 | 0 | 2 | 0 | 2 |
| 13.1202 - Elementary Teacher Ed | 5 | 0 | 0 | 0 | 0 | 1 | 44 | 2 | 47 |
| 13.1302 - Art Teacher Education | 5 | 0 | 0 | 0 | 0 | 0 | 3 | 0 | 3 |
| 13.1305 - English Teacher Education | 5 | 0 | 0 | 0 | 0 | 0 | 1 | 0 | 1 |
| 13.1311 - Math Teacher Education | 5 | 0 | 0 | 0 | 0 | 0 | 3 | 0 | 3 |
| 13.1312 - Music Teacher Education | 5 | 0 | 0 | 0 | 0 | 0 | 8 | 1 | 9 |
| 13.1313 - Social Science Teaching | 5 | 0 | 0 | 0 | 0 | 0 | 0 | 0 | 0 |
| 13.1314 - Physical Ed Teaching | 5 | 0 | 0 | 1 | 0 | 0 | 3 | 1 | 5 |
| 13.1316 - Earth Science Teaching | 5 | 0 | 0 | 0 | 0 | 0 | 0 | 0 | 0 |
| 13.1317 - Political Science Teaching | 5 | 0 | 0 | 0 | 0 | 0 | 0 | 0 | 0 |
| 13.1322 - Biology Teacher Education | 5 | 0 | 0 | 0 | 0 | 0 | 1 | 0 | 1 |
| 13.1328 - History Teacher Education | 5 | 0 | 0 | 0 | 0 | 0 | 6 | 0 | 6 |
| 13.1330 - Spanish Teacher Ed | 5 | 0 | 0 | 0 | 0 | 0 | 1 | 0 | 1 |
| 13.1331 - Speech Teacher Ed | 5 | 0 | 0 | 1 | 0 | 0 | 8 | 0 | 9 |
| 16.0501 - German Language & Lit | 5 | 0 | 0 | 0 | 0 | 0 | 3 | 0 | 3 |
| 16.0901 - French Language & Lit | 5 | 0 | 0 | 0 | 0 | 0 | 0 | 0 | 0 |
| 16.0905 - Spanish Language & Lit | 5 | 0 | 0 | 0 | 1 | 0 | 3 | 2 | 6 |
| 23.0101 - English Language & Lit | 5 | 0 | 0 | 0 | 0 | 0 | 23 | 0 | 23 |
| 23.1001 - Communication Studies | 5 | 0 | 0 | 0 | 0 | 0 | 0 | 0 | 0 |
| 24.0101 - Liberal Studies | 5 | 0 | 0 | 0 | 0 | 0 | 3 | 0 | 3 |

COMPLETIONS FROM JULY 1, 2006 TO JUNE 30, 2007
 BY LEVEL - All MAJORS MALE & FEMALE

| CIP | LEVEL | ALIEN | 1 BLACK | 2 AM INDIAN | 3 ASIAN | 4 HISPANIC | 5 WHITE | 6 UNKN | 7 TOTAL | |
|--|-------|-------|------------|----------------|------------|---------------|------------|-----------|------------|-----|
| 26.0101 - Biology, General | 5 | | 1 | 0 | 0 | 0 | 0 | 47 | 1 | 49 |
| 27.0101 - Mathematics | 5 | | 0 | 0 | 0 | 0 | 0 | 8 | 0 | 8 |
| 30.0201 - International Studies | 5 | | 0 | 0 | 0 | 0 | 0 | 3 | 0 | 3 |
| 31.0101 - Parks Recreation & Leisure | 5 | | 0 | 0 | 0 | 0 | 0 | 11 | 0 | 11 |
| 38.0101 - Philosophy | 5 | | 0 | 1 | 0 | 0 | 0 | 1 | 1 | 3 |
| 40.0501 - Chemistry | 5 | | 0 | 0 | 0 | 0 | 0 | 6 | 0 | 6 |
| 40.0601 - Geology/Earth Science, General | 5 | | 0 | 0 | 0 | 0 | 0 | 3 | 1 | 4 |
| 40.0801 - Physics | 5 | | 0 | 0 | 0 | 0 | 0 | 4 | 0 | 4 |
| 42.0101 - Psychology | 5 | | 0 | 0 | 1 | 2 | 1 | 74 | 3 | 81 |
| 43.0104 - Criminal Justice Studies | 5 | | 0 | 0 | 3 | 2 | 2 | 46 | 2 | 55 |
| 45.0201 - Anthropology | 5 | | 0 | 0 | 0 | 0 | 0 | 7 | 1 | 8 |
| 45.0601 - Economics | 5 | | 0 | 0 | 1 | 0 | 0 | 6 | 2 | 9 |
| 45.1001 - Political Science | 5 | | 0 | 0 | 1 | 0 | 1 | 37 | 1 | 40 |
| 45.1101 - Sociology | 5 | | 0 | 0 | 0 | 0 | 1 | 7 | 1 | 9 |
| 50.0501 - Drama/Theater Arts | 5 | | 0 | 0 | 0 | 0 | 0 | 7 | 2 | 9 |
| 50.0701 - Art | 5 | | 0 | 0 | 1 | 1 | 0 | 17 | 2 | 21 |
| 50.0901 - Music | 5 | | 0 | 0 | 0 | 0 | 0 | 2 | 2 | 4 |
| 50.0903 - Music Performance, General | 5 | | 0 | 0 | 0 | 0 | 1 | 2 | 0 | 3 |
| 51.0201 - Communication Disorders | 5 | | 0 | 0 | 0 | 0 | 0 | 12 | 1 | 13 |
| 51.0602 - Dental Hygienist | 5 | | 0 | 0 | 0 | 0 | 0 | 17 | 2 | 19 |
| 51.0702 - Hospital/Health Servs Admn | 5 | | 0 | 0 | 1 | 0 | 0 | 13 | 0 | 14 |
| 51.0912 - Physician Assistant | 5 | | 0 | 0 | 0 | 0 | 0 | 1 | 0 | 1 |
| 51.1005 - Medical Technology | 5 | | 0 | 0 | 0 | 0 | 0 | 5 | 0 | 5 |
| 51.1501 - Alcohol/Drug Abuse Counseling | 5 | | 0 | 0 | 1 | 1 | 0 | 11 | 1 | 14 |
| 51.1503 - Clinical & Medical Social Work | 5 | | 0 | 0 | 0 | 0 | 0 | 21 | 0 | 21 |
| 52.0201 - Business Admn & Mgmt | 5 | | 0 | 0 | 0 | 0 | 0 | 78 | 6 | 84 |
| 52.0301 - Accounting | 5 | | 1 | 0 | 0 | 0 | 0 | 33 | 0 | 34 |
| 52.0801 - Finance, General | 5 | | 1 | 0 | 0 | 1 | 0 | 29 | 1 | 32 |
| 521401 - Marketing/Marketing Management | 5 | | 0 | 0 | 0 | 0 | 0 | 27 | 1 | 28 |
| 54.0101 - History - General | 5 | | 0 | 1 | 0 | 0 | 0 | 26 | 0 | 27 |
| | | | 3 | 2 | 13 | 9 | 8 | 730 | 40 | 805 |

MASTER

COMPLETIONS FROM JULY 1, 2006 TO JUNE 30, 2007
 BY LEVEL - All MAJORS MALE & FEMALE

| CIP | LEVEL | ALIEN | 1 BLACK | 2 AM INDIAN | 3 ASIAN | 4 HISPANIC | 5 WHITE | 6 UNKN | 7 TOTAL |
|--|-------|-------|------------|----------------|------------|---------------|------------|-----------|------------|
| 09.0102 - Mass Comm | 7 | 7 | 0 | 0 | 0 | 0 | 0 | 0 | 0 |
| 11.0101 - Computer Science | 7 | 7 | 3 | 0 | 0 | 0 | 0 | 2 | 5 |
| 13.0401 - Education Admn | 7 | 7 | 2 | 0 | 1 | 0 | 0 | 21 | 24 |
| 13.0501 - Ed/Inst Media Design | 7 | 7 | 0 | 0 | 0 | 0 | 0 | 24 | 25 |
| 13.1001 - Special Education | 7 | 7 | 0 | 0 | 0 | 0 | 0 | 11 | 12 |
| 13.1101 - Ed Counseling | 7 | 7 | 0 | 0 | 0 | 0 | 0 | 0 | 0 |
| 13.1202 - Elementary Teacher Ed | 7 | 7 | 0 | 0 | 0 | 0 | 0 | 15 | 16 |
| 13.1205 - Secondary Teacher Ed | 7 | 7 | 0 | 0 | 0 | 0 | 0 | 7 | 7 |
| 13.1314 - Physical Ed Teaching | 7 | 7 | 0 | 1 | 0 | 0 | 0 | 9 | 10 |
| 13.1331 - Speech Teacher Ed | 7 | 7 | 1 | 0 | 0 | 0 | 0 | 4 | 5 |
| 23.0101 - English Language & Lit | 7 | 7 | 0 | 0 | 0 | 0 | 0 | 12 | 12 |
| 23.1001 - Communication Studies | 7 | 7 | 0 | 0 | 0 | 0 | 0 | 0 | 0 |
| 24.0101 - Liberal Studies | 7 | 7 | 0 | 0 | 0 | 0 | 0 | 12 | 12 |
| 26.0101 - Biology, General | 7 | 7 | 0 | 0 | 0 | 0 | 0 | 5 | 5 |
| 26.0202 - Biomedical Sciences, General | 7 | 7 | 2 | 0 | 0 | 0 | 0 | 0 | 2 |
| 27.0101 - Mathematics | 7 | 7 | 0 | 0 | 0 | 0 | 0 | 3 | 3 |
| 30.0101 - Biological & Physical Sciences | 7 | 7 | 0 | 0 | 0 | 0 | 0 | 1 | 1 |
| 40.0501 - Chemistry | 7 | 7 | 2 | 0 | 0 | 0 | 0 | 1 | 3 |
| 42.0101 - Psychology | 7 | 7 | 1 | 1 | 1 | 0 | 0 | 11 | 14 |
| 42.0601 - Counseling Psychology | 7 | 7 | 0 | 0 | 1 | 0 | 1 | 15 | 17 |
| 440001 - Human Services, General MSAS | 7 | 7 | 3 | 0 | 0 | 0 | 0 | 27 | 33 |
| 44.0401 - Public Administration | 7 | 7 | 0 | 0 | 1 | 0 | 0 | 13 | 14 |
| 45.1001 - Political Science | 7 | 7 | 0 | 0 | 0 | 0 | 0 | 2 | 2 |
| 45.1101 - Sociology | 7 | 7 | 0 | 0 | 0 | 0 | 0 | 0 | 0 |
| 50.0501 - Drama/Theater Arts | 7 | 7 | 0 | 0 | 0 | 0 | 0 | 2 | 2 |
| 50.0701 - Art | 7 | 7 | 0 | 0 | 0 | 0 | 0 | 2 | 2 |
| 50.0901 - Music | 7 | 7 | 0 | 0 | 0 | 0 | 0 | 4 | 4 |
| 50.0902 - Music History & Lit | 7 | 7 | 0 | 0 | 0 | 0 | 0 | 0 | 0 |
| 51.0201 - Communication Disorders | 7 | 7 | 0 | 0 | 0 | 0 | 0 | 11 | 11 |
| 510910 - Physician Assistant | 7 | 7 | 0 | 1 | 1 | 0 | 1 | 18 | 21 |
| 51.2306 - Occupational Therapy | 7 | 7 | 0 | 0 | 1 | 0 | 0 | 7 | 8 |
| 51.2308 - Physical Therapy | 7 | 7 | 1 | 0 | 0 | 0 | 0 | 14 | 15 |
| 52.0201 - Business Admn & Mgmt | 7 | 7 | 9 | 0 | 0 | 2 | 0 | 57 | 73 |

COMPLETIONS FROM JULY 1, 2006 TO JUNE 30, 2007
 BY LEVEL - All MAJORS MALE & FEMALE

| CIP | LEVEL | ALIEN | 1 BLACK | 2 AM INDIAN | 3 ASIAN | 4 HISPANIC | 5 WHITE | 6 UNKN | 7 TOTAL | |
|--|-------|-------|------------|----------------|------------|---------------|------------|-----------|------------|------|
| 52.0301 - Accounting | 7 | | 2 | 0 | 0 | 0 | 0 | 25 | 1 | 28 |
| 54.0101 - History, General | 7 | | 0 | 0 | 0 | 0 | 0 | 4 | 0 | 4 |
| | | | 26 | 3 | 6 | 2 | 2 | 339 | 12 | 390 |
| SPECIALIST | | | | | | | | | | |
| 13.0301 - Curriculum & Instruction | 8 | | 0 | 0 | 0 | 0 | 0 | 0 | 0 | 0 |
| 13.0401 - Education Admn | 8 | | 0 | 0 | 0 | 0 | 0 | 5 | 0 | 5 |
| 13.0501 - Ed/Inst Media Design | 8 | | 0 | 0 | 0 | 0 | 0 | 5 | 0 | 5 |
| 13.1101 - Ed Counseling | 8 | | 0 | 0 | 0 | 0 | 0 | 0 | 0 | 0 |
| 13.1201 - Secondary Education & Teaching | 8 | | 0 | 0 | 0 | 0 | 0 | 0 | 0 | 0 |
| 42.0601 - Counseling Psychology | 8 | | 0 | 0 | 0 | 0 | 0 | 10 | 0 | 10 |
| | | | 0 | 0 | 0 | 0 | 0 | 20 | 0 | 20 |
| DOCTORATE | | | | | | | | | | |
| 13.0301 - Curriculum & Instruction | 9 | | 0 | 0 | 0 | 1 | 0 | 7 | 0 | 8 |
| 13.0401 - Education Admn | 9 | | 6 | 0 | 0 | 3 | 0 | 17 | 2 | 28 |
| 13.1101 - Ed Counseling | 9 | | 0 | 0 | 0 | 0 | 0 | 0 | 0 | 0 |
| 23.0101 - English Language & Lit | 9 | | 0 | 0 | 1 | 0 | 0 | 0 | 0 | 1 |
| 26.0101 - Biology, General | 9 | | 0 | 0 | 0 | 0 | 0 | 1 | 0 | 1 |
| 26.0202 - Biomedical Sciences, General | 9 | | 5 | 0 | 0 | 0 | 0 | 2 | 0 | 7 |
| 26.0900 - Physiology and Pharmacology | 9 | | 0 | 0 | 0 | 0 | 0 | 0 | 0 | 0 |
| 42.0101 - Psychology | 9 | | 0 | 0 | 0 | 1 | 0 | 4 | 0 | 5 |
| 42.0601 - Counseling Psychology | 9 | | 0 | 0 | 2 | 0 | 0 | 1 | 1 | 4 |
| | | | 11 | 0 | 3 | 5 | 0 | 32 | 3 | 54 |
| 1st PROFESSIONAL | | | | | | | | | | |
| 22.0101 - Law (JD) | 10 | | 0 | 0 | 1 | 1 | 1 | 69 | 1 | 73 |
| 51.1201 - Medicine (MD) | 10 | | 1 | 1 | 1 | 1 | 0 | 44 | 0 | 48 |
| 51.2300 - Physical Therapy | 10 | | 0 | 0 | 0 | 0 | 0 | 6 | 0 | 6 |
| | | | 1 | 1 | 2 | 2 | 1 | 119 | 1 | 127 |
| GRAND TOTALS | | | 41 | 9 | 28 | 19 | 13 | 1555 | 67 | 1732 |

COMPLETIONS FROM JULY 1, 2007 TO JUNE 30, 2008
 BY LEVEL - ALL MAJORS MALE & FEMALE

| CIP | LEVEL | ALIEN | 1 BLACK | 2 AM INDIAN | 3 ASIAN | 4 HISPANIC | 5 WHITE | 6 UNKN | 7 TOTAL | |
|--|-------|-------|------------|----------------|------------|---------------|------------|-----------|------------|-----|
| 24.0101 - Liberal Studies | 5 | 0 | 0 | 0 | 0 | 0 | 0 | 0 | 0 | |
| 26.0101 - Biology, General | 5 | 0 | 0 | 2 | 1 | 0 | 40 | 1 | 44 | |
| 27.0101 - Mathematics | 5 | 0 | 1 | 0 | 0 | 0 | 5 | 0 | 6 | |
| 30.0201 - International Studies | 5 | 0 | 0 | 0 | 1 | 1 | 6 | 0 | 8 | |
| 31.0101 - Parks Recreation & Leisure | 5 | 0 | 1 | 0 | 0 | 0 | 11 | 0 | 12 | |
| 38.0101 - Philosophy | 5 | 0 | 0 | 0 | 0 | 0 | 2 | 0 | 2 | |
| 40.0501 - Chemistry | 5 | 0 | 1 | 0 | 0 | 0 | 12 | 2 | 15 | |
| 40.0601 - Geology/Earth Science, General | 5 | 0 | 0 | 0 | 0 | 0 | 3 | 0 | 3 | |
| 40.0801 - Physics | 5 | 0 | 0 | 0 | 0 | 0 | 1 | 1 | 2 | |
| 42.0101 - Psychology | 5 | 0 | 1 | 2 | 3 | 1 | 103 | 4 | 114 | |
| 43.0104 - Criminal Justice Studies | 5 | 0 | 0 | 1 | 1 | 0 | 49 | 2 | 53 | |
| 45.0201 - Anthropology | 5 | 0 | 0 | 0 | 0 | 0 | 9 | 0 | 9 | |
| 45.0601 - Economics | 5 | 0 | 0 | 0 | 0 | 0 | 12 | 1 | 13 | |
| 45.1001 - Political Science | 5 | 0 | 0 | 1 | 2 | 0 | 36 | 3 | 42 | |
| 45.1101 - Sociology | 5 | 0 | 0 | 0 | 0 | 0 | 7 | 1 | 8 | |
| 50.0501 - Drama/Theater Arts | 5 | 0 | 0 | 0 | 0 | 0 | 12 | 0 | 12 | |
| 50.0701 - Art | 5 | 0 | 0 | 1 | 0 | 0 | 14 | 1 | 16 | |
| 50.0901 - Music | 5 | 0 | 1 | 0 | 0 | 0 | 4 | 0 | 5 | |
| 50.0903 - Music Performance, General | 5 | 0 | 0 | 0 | 0 | 0 | 6 | 0 | 6 | |
| 51.0201 - Communication Disorders | 5 | 0 | 1 | 0 | 1 | 0 | 16 | 0 | 18 | |
| 51.0602 - Dental Hygienist | 5 | 0 | 0 | 0 | 0 | 0 | 32 | 0 | 32 | |
| 51.0702 - Hospital/Health Servs Admn | 5 | 1 | 1 | 0 | 0 | 0 | 16 | 0 | 18 | |
| 51.0912 - Physician Assistant | 5 | 0 | 0 | 0 | 0 | 0 | 0 | 0 | 0 | |
| 51.1005 - Medical Technology | 5 | 0 | 1 | 0 | 0 | 0 | 1 | 0 | 2 | |
| 51.1501 - Alcohol/Drug Abuse Counseling | 5 | 0 | 0 | 0 | 0 | 0 | 7 | 0 | 7 | |
| 51.1503 - Clinical & Medical Social Work | 5 | 0 | 0 | 0 | 1 | 1 | 20 | 3 | 25 | |
| 52.0201 - Business Admn & Mgmt | 5 | 0 | 0 | 0 | 0 | 0 | 57 | 0 | 57 | |
| 52.0301 - Accounting | 5 | 0 | 0 | 0 | 1 | 0 | 44 | 2 | 47 | |
| 52.0801 - Finance, General | 5 | 2 | 1 | 0 | 0 | 0 | 40 | 3 | 46 | |
| 52.1401 - Marketing/Marketing Management | 5 | 0 | 0 | 0 | 1 | 2 | 36 | 0 | 39 | |
| 54.0101 - History - General | 5 | 0 | 0 | 1 | 1 | 1 | 22 | 0 | 25 | |
| MASTER | | | 3 | 12 | 12 | 16 | 7 | 850 | 39 | 939 |

COMPLETIONS FROM JULY 1, 2007 TO JUNE 30, 2008
 BY LEVEL - ALL MAJORS MALE & FEMALE

| CIP | LEVEL | ALIEN | 1 BLACK | 2 AM INDIAN | 3 ASIAN | 4 HISPANIC | 5 WHITE | 6 UNKN | 7 TOTAL | |
|--|-------|-------|------------|----------------|------------|---------------|------------|-----------|------------|------|
| 52.0201 - Business Admn & Mgmt | 7 | 7 | 5 | 0 | 0 | 2 | 0 | 65 | 1 | 73 |
| 52.0301 - Accounting | 7 | 7 | 4 | 0 | 0 | 1 | 0 | 18 | 1 | 24 |
| 54.0101 - History, General | 7 | 7 | 0 | 0 | 1 | 0 | 0 | 6 | 1 | 8 |
| | | | 19 | 2 | 9 | 4 | 3 | 392 | 19 | 448 |
| SPECIALIST | | | | | | | | | | |
| 13.0301 - Curriculum & Instruction | 8 | 8 | 0 | 0 | 0 | 0 | 0 | 0 | 0 | 0 |
| 13.0401 - Education Admn | 8 | 8 | 0 | 0 | 0 | 0 | 0 | 8 | 0 | 8 |
| 13.0501 - Ed/Inst Media Design | 8 | 8 | 0 | 0 | 0 | 0 | 0 | 7 | 0 | 7 |
| 13.1101 - Ed Counseling | 8 | 8 | 0 | 0 | 0 | 0 | 0 | 0 | 0 | 0 |
| 13.1201 - Secondary Education & Teaching | 8 | 8 | 0 | 0 | 0 | 0 | 0 | 2 | 0 | 2 |
| 42.0601 - Counseling Psychology | 8 | 8 | 0 | 0 | 0 | 0 | 0 | 10 | 0 | 10 |
| | | | 0 | 0 | 0 | 0 | 0 | 27 | 0 | 27 |
| DOCTORAL | | | | | | | | | | |
| 13.0301 - Curriculum & Instruction | 9 | 9 | 0 | 0 | 0 | 0 | 0 | 12 | 0 | 12 |
| 13.0401 - Education Admn | 9 | 9 | 3 | 0 | 0 | 0 | 0 | 26 | 1 | 30 |
| 13.1101 - Ed Counseling | 9 | 9 | 0 | 0 | 0 | 0 | 0 | 0 | 0 | 0 |
| 23.0101 - English Language & Lit | 9 | 9 | 0 | 0 | 0 | 0 | 0 | 3 | 0 | 3 |
| 26.0101 - Biology, General | 9 | 9 | 0 | 0 | 0 | 0 | 0 | 1 | 0 | 1 |
| 26.0102 - Biomedical Sciences, General | 9 | 9 | 2 | 0 | 0 | 0 | 0 | 1 | 0 | 3 |
| 26.0900 - Physiology and Pharmacology | 9 | 9 | 0 | 0 | 0 | 0 | 0 | 0 | 0 | 0 |
| 42.0101 - Psychology | 9 | 9 | 0 | 0 | 0 | 0 | 0 | 7 | 1 | 8 |
| 42.0601 - Counseling Psychology | 9 | 9 | 0 | 0 | 0 | 0 | 0 | 4 | 0 | 4 |
| | | | 5 | 0 | 0 | 0 | 0 | 54 | 2 | 61 |
| 1st PROFESSIONAL | | | | | | | | | | |
| 22.0101 - Law (JD) | 10 | 10 | 0 | 1 | 2 | 0 | 3 | 74 | 7 | 87 |
| 51.0202 - Audiology | 10 | 10 | 0 | 0 | 0 | 0 | 0 | 1 | 0 | 1 |
| 51.1201 - Medicine (MD) | 10 | 10 | 0 | 0 | 2 | 0 | 0 | 51 | 0 | 53 |
| 51.2300 - Physical Therapy | 10 | 10 | 1 | 0 | 0 | 0 | 0 | 20 | 0 | 21 |
| | | | 1 | 1 | 4 | 0 | 3 | 146 | 7 | 162 |
| GRAND TOTALS | | | 29 | 18 | 30 | 21 | 17 | 1740 | 78 | 1933 |

COMPLETIONS FROM JULY 1, 2008 TO JUNE 30, 2009
 BY LEVEL - All MAJORS MALE & FEMALE

| CIP | LEVEL | ALIEN | 1 BLACK | 2 AM INDIAN | 3 ASIAN | 4 HISPANIC | 5 WHITE | 6 UNKN | 7 TOTAL | |
|---|-------|-------|------------|----------------|------------|---------------|------------|-----------|------------|-----|
| ASSOCIATE | | | | | | | | | | |
| 24.0102 - General Studies | 3 | 0 | 0 | 0 | 0 | 0 | 0 | 7 | 0 | 7 |
| 51.0602 - Dental Hygienist | 3 | 0 | 0 | 0 | 0 | 0 | 0 | 57 | 6 | 63 |
| 51.1601 - Nursing (RN) | 3 | 0 | 2 | 7 | 4 | 2 | 218 | 7 | 7 | 240 |
| Total Level 3 | | 0 | 2 | 7 | 4 | 2 | 282 | 13 | | 310 |
| | | | | | | | | | | |
| 13.1205 - secondary Educ Specialization | 4 | 0 | 0 | 0 | 0 | 0 | 0 | 2 | 0 | 2 |
| 51.1501 - Alcohol and Drug Studies | 4 | 0 | 0 | 0 | 0 | 0 | 0 | 1 | 0 | 1 |
| Total Level 4 | | 0 | 0 | 0 | 0 | 0 | 0 | 3 | 0 | 3 |
| | | | | | | | | | | |
| BACHELOR | | | | | | | | | | |
| 05.0202 - American Indian Studies Prog | 5 | 0 | 0 | 0 | 1 | 0 | 0 | 0 | 1 | 2 |
| 09.0102 - Contemporary Media/Journalism | 5 | 0 | 0 | 1 | 1 | 0 | 1 | 45 | 6 | 54 |
| 11.0101 - Computer Science | 5 | 0 | 0 | 0 | 0 | 0 | 0 | 7 | 0 | 7 |
| 13.1001 - Special Education | 5 | 0 | 0 | 0 | 0 | 0 | 0 | 0 | 0 | 0 |
| 13.1202 - Elementary Education | 5 | 0 | 0 | 1 | 1 | 1 | 0 | 63 | 3 | 69 |
| 13.1302 - Art Education | 5 | 0 | 0 | 1 | 1 | 1 | 0 | 27 | 1 | 3 |
| 13.1305 - English Education | 5 | 0 | 0 | 0 | 0 | 0 | 0 | 7 | 0 | 7 |
| 13.1311 - Mathematics Education | 5 | 0 | 0 | 0 | 0 | 0 | 0 | 8 | 0 | 8 |
| 13.1312 - Music Education | 5 | 0 | 0 | 0 | 0 | 0 | 0 | 10 | 0 | 10 |
| 13.1313 - Social Science Teaching | 5 | 0 | 0 | 0 | 0 | 0 | 0 | 0 | 0 | 0 |
| 13.1314 - Physical Education | 5 | 0 | 0 | 0 | 0 | 1 | 0 | 11 | 0 | 12 |
| 13.1316 - Earth Science Teaching | 5 | 0 | 0 | 0 | 0 | 0 | 0 | 0 | 0 | 0 |
| 13.1317 - Political Science Teaching | 5 | 0 | 0 | 0 | 0 | 0 | 0 | 0 | 0 | 0 |
| 13.1322 - Biology Education | 5 | 0 | 0 | 0 | 0 | 0 | 0 | 4 | 0 | 4 |
| 13.1324 - Theatre Education | 5 | 0 | 0 | 0 | 0 | 0 | 0 | 1 | 0 | 1 |
| 13.1328 - History Education | 5 | 0 | 0 | 0 | 0 | 0 | 0 | 8 | 0 | 8 |
| 13.1330 - Spanish Teacher Ed | 5 | 0 | 0 | 0 | 0 | 0 | 0 | 1 | 0 | 1 |
| 13.1331 - Speech Teacher Ed | 5 | 0 | 0 | 0 | 0 | 0 | 0 | 3 | 0 | 3 |
| 16.0501 - German Language & Lit | 5 | 0 | 0 | 0 | 0 | 0 | 0 | 0 | 0 | 0 |
| 16.0901 - French Language & Lit | 5 | 0 | 0 | 0 | 0 | 0 | 0 | 1 | 0 | 1 |
| 16.0905 - Spanish | 5 | 0 | 0 | 0 | 0 | 1 | 0 | 6 | 1 | 8 |
| 23.0101 - English | 5 | 0 | 0 | 0 | 0 | 0 | 0 | 23 | 0 | 23 |

COMPLETIONS FROM JULY 1, 2008 TO JUNE 30, 2009
 BY LEVEL - ALL MAJORS MALE & FEMALE

| CIP | LEVEL | ALIEN | 1 BLACK | 2 AM INDIAN | 3 ASIAN | 4 HISPANIC | 5 WHITE | 6 UNKN | 7 | TOTAL |
|--------------------------------------|-------|-------|------------|----------------|------------|---------------|------------|-----------|---|-------|
| 23.1001 - Communication Studies | 5 | 0 | 0 | 0 | 0 | 0 | 0 | 0 | 0 | 0 |
| 24.0101 - Liberal Studies | 5 | 0 | 0 | 0 | 0 | 0 | 0 | 2 | 0 | 2 |
| 26.0101 - Biology | 5 | 0 | 0 | 0 | 1 | 0 | 47 | 0 | 0 | 48 |
| 27.0101 - Mathematics | 5 | 0 | 0 | 0 | 1 | 0 | 2 | 0 | 0 | 3 |
| 30.2001 - International Studies | 5 | 0 | 0 | 0 | 0 | 0 | 4 | 0 | 0 | 4 |
| 31.0101 - Recreation | 5 | 0 | 1 | 0 | 0 | 0 | 12 | 2 | 0 | 15 |
| 38.0101 - Philosophy | 5 | 0 | 0 | 0 | 0 | 0 | 2 | 0 | 0 | 2 |
| 40.0501 - Chemistry | 5 | 0 | 1 | 0 | 3 | 0 | 13 | 1 | 0 | 18 |
| 40.0601 - Earth Science | 5 | 0 | 0 | 0 | 0 | 0 | 5 | 0 | 0 | 5 |
| 40.0801 - Physics | 5 | 0 | 0 | 0 | 0 | 0 | 2 | 0 | 0 | 2 |
| 42.0101 - Psychology | 5 | 0 | 1 | 2 | 4 | 5 | 92 | 7 | 0 | 111 |
| 43.0104 - Criminal Justice Studies | 5 | 0 | 3 | 1 | 0 | 1 | 45 | 3 | 0 | 53 |
| 45.0201 - Anthropology | 5 | 0 | 0 | 0 | 0 | 0 | 8 | 0 | 0 | 8 |
| 45.0601 - Economics | 5 | 0 | 0 | 0 | 0 | 0 | 12 | 0 | 0 | 12 |
| 45.1001 - Political Science | 5 | 0 | 1 | 0 | 0 | 0 | 34 | 2 | 0 | 37 |
| 45.1101 - Sociology | 5 | 0 | 1 | 1 | 0 | 1 | 17 | 2 | 0 | 22 |
| 50.0501 - Theater | 5 | 0 | 0 | 0 | 0 | 0 | 9 | 0 | 0 | 9 |
| 50.0701 - Art | 5 | 1 | 0 | 1 | 0 | 0 | 18 | 2 | 0 | 22 |
| 50.0901 - Musical Arts | 5 | 0 | 0 | 0 | 0 | 0 | 6 | 0 | 0 | 6 |
| 50.0903 - Music Performance, General | 5 | 0 | 0 | 0 | 0 | 0 | 4 | 0 | 0 | 4 |
| 51.0201 - Communication Disorders | 5 | 0 | 0 | 0 | 1 | 0 | 25 | 0 | 0 | 26 |
| 51.0602 - Dental Hygienist | 5 | 0 | 1 | 0 | 0 | 0 | 37 | 3 | 0 | 41 |
| 51.0702 - Health Services Admin | 5 | 0 | 0 | 0 | 0 | 0 | 15 | 0 | 0 | 15 |
| 51.0912 - Physician Assistant | 5 | 0 | 0 | 0 | 0 | 0 | 1 | 0 | 0 | 1 |
| 51.1005 - Medical Technology | 5 | 0 | 0 | 0 | 0 | 0 | 8 | 0 | 0 | 8 |
| 51.1501 - Alcohol/Drug Abuse Studies | 5 | 0 | 0 | 2 | 1 | 0 | 15 | 1 | 0 | 19 |
| 51.1503 - Social Work | 5 | 0 | 0 | 0 | 0 | 1 | 21 | 1 | 0 | 23 |
| 52.0201 - Business-Management | 5 | 0 | 1 | 0 | 1 | 0 | 77 | 3 | 0 | 82 |
| 52.0301 - Accounting | 5 | 0 | 0 | 1 | 1 | 0 | 40 | 2 | 0 | 44 |
| 52.0801 - Finance | 5 | 0 | 0 | 0 | 0 | 0 | 26 | 0 | 0 | 26 |
| 521401 - Marketing | 5 | 0 | 0 | 0 | 0 | 0 | 21 | 0 | 0 | 21 |
| 54.0101 - History | 5 | 1 | 0 | 1 | 0 | 1 | 17 | 3 | 0 | 23 |
| Total Level 5 | | 2 | 13 | 13 | 17 | 10 | 862 | 44 | 0 | 933 |

COMPLETIONS FROM JULY 1, 2008 TO JUNE 30, 2009
 BY LEVEL - All MAJORS MALE & FEMALE

| CIP | LEVEL | ALIEN | 1 BLACK | 2 AM INDIAN | 3 ASIAN | 4 HISPANIC | 5 WHITE | 6 UNKN | 7 TOTAL |
|--|-------|-------|------------|----------------|------------|---------------|------------|-----------|------------|
| MASTER | | | | | | | | | |
| 09.0102 - Mass Comm | 7 | 0 | 0 | 0 | 0 | 0 | 0 | 0 | 0 |
| 11.0101 - Computer Science | 7 | 4 | 0 | 0 | 0 | 0 | 0 | 1 | 0 |
| 13.0301 - Curriculum & Instruction | 7 | 0 | 0 | 0 | 0 | 0 | 0 | 0 | 0 |
| 13.0401 - Education Administration | 7 | 0 | 0 | 0 | 0 | 0 | 0 | 40 | 2 |
| 13.0501 - technology for Ed&Training | 7 | 0 | 0 | 1 | 0 | 0 | 0 | 13 | 0 |
| 13.1001 - Special Education | 7 | 0 | 0 | 0 | 0 | 0 | 0 | 6 | 0 |
| 13.1101 - Ed Counseling | 7 | 0 | 0 | 0 | 0 | 0 | 0 | 0 | 0 |
| 13.1202 - Elementary Education | 7 | 0 | 0 | 0 | 0 | 0 | 0 | 23 | 0 |
| 13.1205 - Secondary Education | 7 | 0 | 0 | 0 | 0 | 0 | 0 | 2 | 0 |
| 13.1314 - Health, Phys Education &Recrea | 7 | 0 | 1 | 0 | 0 | 0 | 0 | 10 | 0 |
| 13.1331 - Speech Communication | 7 | 0 | 0 | 0 | 0 | 0 | 0 | 3 | 0 |
| 23.0101 - English | 7 | 0 | 0 | 0 | 0 | 0 | 1 | 11 | 1 |
| 23.1001 - Communication Studies | 7 | 0 | 0 | 0 | 0 | 0 | 0 | 0 | 0 |
| 24.0101 - Interdisciplinary Studies | 7 | 0 | 0 | 0 | 0 | 0 | 0 | 5 | 0 |
| 26.0101 - Biology | 7 | 2 | 0 | 0 | 0 | 0 | 0 | 5 | 0 |
| 26.0102 - Biomedical Sciences | 7 | 2 | 0 | 0 | 0 | 0 | 0 | 0 | 0 |
| 27.0101 - Mathematics | 7 | 1 | 0 | 0 | 0 | 0 | 0 | 6 | 0 |
| 30.0101 - Biological & Physical Sciences | 7 | 0 | 0 | 0 | 0 | 0 | 0 | 0 | 0 |
| 40.0501 - Chemistry | 7 | 5 | 0 | 1 | 0 | 0 | 0 | 0 | 0 |
| 42.0101 - Psychology | 7 | 1 | 0 | 0 | 0 | 0 | 0 | 6 | 0 |
| 42.0601 - Counseling &Psychology in Ed | 7 | 0 | 0 | 0 | 0 | 0 | 1 | 21 | 0 |
| 440000 - Administrative Studies | 7 | 0 | 0 | 1 | 0 | 0 | 0 | 33 | 1 |
| 44.0401 - Public Administration | 7 | 0 | 0 | 1 | 0 | 0 | 0 | 13 | 1 |
| 45.1001 - Political Science | 7 | 0 | 0 | 0 | 0 | 0 | 0 | 3 | 0 |
| 45.1101 - Sociology | 7 | 0 | 0 | 0 | 0 | 0 | 0 | 0 | 0 |
| 50.0501 - Theater | 7 | 0 | 0 | 0 | 0 | 0 | 0 | 1 | 2 |
| 50.0701 - Art | 7 | 0 | 0 | 0 | 1 | 0 | 0 | 0 | 0 |
| 50.0901 - Music | 7 | 0 | 0 | 0 | 0 | 1 | 0 | 4 | 3 |
| 50.0902 - Music History & Lit | 7 | 0 | 0 | 0 | 0 | 0 | 0 | 0 | 0 |
| 51.0201 - Speech-Language Pathology | 7 | 0 | 0 | 0 | 0 | 0 | 0 | 15 | 2 |
| 510912 - Physician Assistant Studies | 7 | 0 | 0 | 0 | 2 | 0 | 0 | 17 | 2 |

COMPLETIONS FROM JULY 1, 2008 TO JUNE 30, 2009
 BY LEVEL - All MAJORS MALE & FEMALE

| CIP | LEVEL | ALIEN | 1 BLACK | 2 AM INDIAN | 3 ASIAN | 4 HISPANIC | 5 WHITE | 6 UNKN | 7 TOTAL | |
|---|-------|-------|------------|----------------|------------|---------------|------------|-----------|------------|-----|
| 51.2306 - Occupational Therapy | 7 | 0 | 0 | 0 | 0 | 0 | 0 | 19 | 4 | 19 |
| 51.2308 - Physical Therapy | 7 | 0 | 0 | 0 | 0 | 0 | 0 | 0 | 0 | 0 |
| 52.0201 - Business Administration | 7 | 4 | 0 | 0 | 1 | 0 | 0 | 54 | 34 | 61 |
| 52.0301 - Professional Accountancy | 7 | 4 | 0 | 1 | 1 | 0 | 0 | 32 | 1 | 39 |
| 54.0101 - History, General | 7 | 0 | 0 | 0 | 0 | 0 | 0 | 5 | 0 | 5 |
| Total Level 7 | | 23 | 1 | 5 | 5 | 3 | 0 | 348 | 53 | 395 |
| SPECIALIST | | | | | | | | | | |
| 13.0301 - Curriculum & Instruction | 8 | 0 | 0 | 0 | 0 | 0 | 0 | 0 | 0 | 0 |
| 13.0401 - Education Administration | 8 | 0 | 0 | 0 | 0 | 0 | 0 | 7 | 0 | 7 |
| 13.0501 - Ed/Inst Media Design | 8 | 0 | 0 | 0 | 0 | 0 | 0 | 0 | 0 | 0 |
| 13.1101 - Ed Counseling | 8 | 0 | 0 | 0 | 0 | 0 | 0 | 0 | 0 | 0 |
| 42.0601 - Counseling Psychology | 8 | 0 | 0 | 0 | 1 | 0 | 0 | 11 | 1 | 13 |
| 44.0401 - State Govt Ldrship Excellence | 8 | 0 | 0 | 1 | 0 | 0 | 0 | 8 | 0 | 9 |
| Total Level 8 | | 0 | 0 | 1 | 1 | 0 | 0 | 26 | 1 | 29 |
| DOCTORATE | | | | | | | | | | |
| 13.0301 - Curriculum & Instruction | 9 | 0 | 0 | 0 | 0 | 1 | 0 | 4 | 1 | 6 |
| 13.0401 - Education Administration | 9 | 3 | 1 | 1 | 0 | 0 | 0 | 33 | 1 | 39 |
| 13.1101 - Ed Counseling | 9 | 0 | 0 | 0 | 0 | 0 | 0 | 0 | 0 | 0 |
| 23.0101 - English | 9 | 0 | 0 | 0 | 0 | 0 | 0 | 3 | 0 | 3 |
| 26.0101 - Biological Science | 9 | 1 | 0 | 0 | 0 | 0 | 0 | 2 | 0 | 3 |
| 26.0102 - Biomedical Sciences | 9 | 4 | 0 | 0 | 0 | 0 | 0 | 3 | 0 | 7 |
| 27.0303 - Computational Sci & Stats | 9 | 1 | 0 | 0 | 0 | 0 | 0 | 0 | 0 | 1 |
| 42.0101 - Psychology | 9 | 0 | 0 | 1 | 0 | 0 | 0 | 8 | 1 | 10 |
| 42.0601 - Counseling Psychology | 9 | 0 | 0 | 0 | 0 | 0 | 0 | 3 | 0 | 3 |
| Total Level 9 | | 9 | 1 | 2 | 0 | 1 | 0 | 56 | 3 | 72 |
| 1st PROFESSIONAL | | | | | | | | | | |
| 22.0101 - Law | 10 | 0 | 0 | 1 | 0 | 0 | 0 | 69 | 38 | 73 |
| 51.0202 - Audiology | 10 | 0 | 0 | 0 | 0 | 0 | 0 | 3 | 0 | 3 |
| 51.1201 - Medicine | 10 | 0 | 0 | 1 | 0 | 0 | 0 | 46 | 24 | 47 |
| 51.2308 - Physical Therapy | 10 | 0 | 0 | 0 | 0 | 0 | 0 | 27 | 9 | 27 |

COMPLETIONS FROM JULY 1, 2008 TO JUNE 30, 2009
 BY LEVEL - All MAJORS MALE & FEMALE

| CIP | LEVEL | 1 ALIEN | 2 BLACK | 3 AM INDIAN | 4 ASIAN | 5 HISPANIC | 6 WHITE | 7 UNKN | TOTAL |
|----------------|-------|------------|------------|----------------|------------|---------------|------------|-----------|-------|
| Total Level 10 | | 0 | 0 | 2 | 0 | 0 | 145 | 71 | 150 |
| GRAND TOTALS | | 34 | 17 | 30 | 27 | 16 | 1722 | 185 | 1892 |

COMPLETIONS FROM JULY 1, 2009 TO JUNE 30, 2010

BY LEVEL - All MAJORS MALE & FEMALE

| CIP | LEVEL | ALIEN | BLACK | AM INDIAN | ASIAN | HISPANIC | WHITE | UNKN | PACIFIC MULTI | | TOTAL |
|---|-------|-------|-------|-----------|-------|----------|-------|------|---------------|--------|-------|
| | | | | | | | | | ISLANDER | RACIAL | |
| 24.0102 - General Studies | 3 | 0 | 0 | 0 | 0 | 0 | 11 | 0 | 0 | 0 | 11 |
| 51.0602 - Dental Hygienist | 3 | 0 | 0 | 0 | 0 | 0 | 30 | 0 | 0 | 0 | 30 |
| 51.1601 - Nursing (RN) | 3 | 0 | 2 | 5 | 2 | 6 | 237 | 9 | 0 | 11 | 272 |
| Total Level 3 | | 0 | 2 | 5 | 2 | 6 | 278 | 9 | 0 | 11 | 313 |
| 13.1205 - Secondary Educ Specialization | 4 | 0 | 0 | 0 | 0 | 0 | 8 | 0 | 0 | 0 | 8 |
| 51.1501 - Alcohol and Drug Studies | 4 | 0 | 0 | 0 | 0 | 0 | 3 | 0 | 0 | 0 | 3 |
| Total Level 4 | | 0 | 0 | 0 | 0 | 0 | 11 | 0 | 0 | 0 | 11 |
| 05.0202 - American Indian Studies Prog | 5 | 0 | 0 | 5 | 0 | 0 | 5 | 1 | 0 | 0 | 11 |
| 09.0102 - Contemporary Media/Journalism | 5 | 0 | 2 | 2 | 0 | 2 | 40 | 5 | 0 | 1 | 52 |
| 11.0101 - Computer Science | 5 | 0 | 0 | 0 | 0 | 0 | 6 | 0 | 0 | 0 | 6 |
| 13.1001 - Special Education | 5 | 0 | 0 | 0 | 0 | 0 | 16 | 0 | 0 | 0 | 16 |
| 13.1202 - Elementary Education | 5 | 0 | 0 | 0 | 0 | 0 | 52 | 1 | 0 | 0 | 53 |
| 13.1302 - Art Education | 5 | 0 | 0 | 0 | 0 | 1 | 4 | 0 | 0 | 0 | 5 |
| 13.1305 - English Education | 5 | 0 | 0 | 0 | 0 | 0 | 4 | 0 | 0 | 0 | 4 |
| 13.1311 - Mathematics Education | 5 | 0 | 0 | 0 | 0 | 0 | 5 | 0 | 0 | 0 | 5 |
| 13.1312 - Music Education | 5 | 0 | 0 | 0 | 0 | 1 | 5 | 0 | 0 | 0 | 6 |
| 13.1313 - Social Science Teaching | 5 | 0 | 0 | 0 | 0 | 0 | 0 | 0 | 0 | 0 | 0 |
| 13.1314 - Physical Education | 5 | 0 | 0 | 0 | 0 | 0 | 8 | 1 | 0 | 0 | 9 |
| 13.1316 - Earth Science Teaching | 5 | 0 | 0 | 0 | 0 | 0 | 0 | 0 | 0 | 0 | 0 |
| 13.1317 - Political Science Teaching | 5 | 0 | 0 | 0 | 0 | 0 | 2 | 0 | 0 | 0 | 2 |
| 13.1322 - Biology Education | 5 | 0 | 0 | 0 | 0 | 0 | 0 | 0 | 0 | 0 | 0 |
| 13.1324 - Theatre Education | 5 | 0 | 0 | 0 | 0 | 0 | 0 | 0 | 0 | 0 | 0 |
| 13.1328 - History Education | 5 | 0 | 0 | 0 | 0 | 0 | 5 | 0 | 0 | 0 | 5 |
| 13.1330 - Spanish Teacher Ed | 5 | 0 | 0 | 0 | 0 | 0 | 2 | 2 | 0 | 0 | 4 |
| 13.1331 - Speech Teacher Ed | 5 | 0 | 0 | 0 | 0 | 0 | 7 | 2 | 0 | 0 | 9 |
| 16.0501 - German Language & Lit | 5 | 0 | 0 | 0 | 0 | 0 | 0 | 0 | 0 | 0 | 0 |
| 16.0901 - French Language & Lit | 5 | 0 | 0 | 0 | 0 | 0 | 1 | 0 | 0 | 0 | 1 |
| 16.0905 - Spanish | 5 | 0 | 0 | 0 | 0 | 0 | 21 | 2 | 0 | 0 | 23 |
| 23.0101 - English | 5 | 0 | 0 | 1 | 0 | 0 | 20 | 1 | 0 | 1 | 23 |
| 23.1001 - Communication Studies | 5 | 0 | 0 | 0 | 0 | 0 | 0 | 0 | 0 | 0 | 0 |
| 24.0101 - Liberal Studies | 5 | 0 | 0 | 0 | 0 | 0 | 2 | 0 | 0 | 0 | 2 |

COMPLETIONS FROM JULY 1, 2009 TO JUNE 30, 2010

BY LEVEL - All MAJORS MALE & FEMALE

| CIP | LEVEL | ALIEN | BLACK | AM | INDIA | ASIAN | HISPANIC | WHITE | UNKN | PACIFIC MULTI | | TOTAL |
|--------------------------------------|-------|-------|-------|----|-------|-------|----------|-------|------|---------------|--------|-------|
| | | | | | | | | | | ISLANDER | RACIAL | |
| 26.0101 - Biology | 5 | 0 | 0 | 0 | 0 | 0 | 0 | 39 | 1 | 0 | 0 | 40 |
| 27.0101 - Mathematics | 5 | 1 | 0 | 0 | 0 | 0 | 0 | 2 | 0 | 0 | 0 | 3 |
| 30.2001 - International Studies | 5 | 0 | 0 | 0 | 0 | 0 | 0 | 11 | 0 | 0 | 0 | 11 |
| 31.0101 - Recreation | 5 | 1 | 0 | 0 | 0 | 0 | 0 | 22 | 3 | 0 | 0 | 26 |
| 38.0101 - Philosophy | 5 | 0 | 0 | 0 | 0 | 0 | 0 | 4 | 0 | 0 | 0 | 4 |
| 40.0501 - Chemistry | 5 | 1 | 0 | 0 | 0 | 0 | 0 | 19 | 0 | 0 | 0 | 20 |
| 40.0601 - Earth Science | 5 | 0 | 0 | 0 | 0 | 0 | 0 | 2 | 1 | 0 | 0 | 3 |
| 40.0801 - Physics | 5 | 0 | 0 | 0 | 0 | 0 | 0 | 0 | 0 | 0 | 0 | 0 |
| 42.0101 - Psychology | 5 | 0 | 1 | 0 | 1 | 2 | 106 | 6 | 0 | 0 | 0 | 116 |
| 43.0104 - Criminal Justice Studies | 5 | 1 | 0 | 0 | 0 | 0 | 53 | 5 | 0 | 0 | 2 | 61 |
| 45.0201 - Anthropology | 5 | 1 | 0 | 0 | 0 | 0 | 10 | 1 | 0 | 0 | 0 | 12 |
| 45.0601 - Economics | 5 | 0 | 0 | 0 | 0 | 0 | 10 | 1 | 0 | 0 | 0 | 11 |
| 45.1001 - Political Science | 5 | 0 | 0 | 0 | 0 | 0 | 26 | 3 | 0 | 0 | 0 | 29 |
| 45.1101 - Sociology | 5 | 0 | 0 | 0 | 0 | 0 | 9 | 1 | 0 | 0 | 1 | 11 |
| 50.0501 - Theater | 5 | 0 | 0 | 0 | 0 | 0 | 15 | 2 | 0 | 0 | 0 | 17 |
| 50.0701 - Art | 5 | 0 | 0 | 0 | 1 | 0 | 18 | 0 | 0 | 0 | 0 | 19 |
| 50.0901 - Musical Arts | 5 | 0 | 0 | 0 | 0 | 0 | 2 | 0 | 0 | 0 | 0 | 2 |
| 50.0903 - Music Performance, General | 5 | 0 | 0 | 0 | 0 | 0 | 5 | 0 | 0 | 0 | 0 | 5 |
| 51.0201 - Communication Disorders | 5 | 0 | 0 | 0 | 0 | 0 | 23 | 0 | 0 | 0 | 0 | 23 |
| 51.0602 - Dental Hygienist | 5 | 0 | 0 | 0 | 0 | 0 | 38 | 0 | 0 | 0 | 0 | 38 |
| 51.0702 - Health Services Admin | 5 | 0 | 0 | 0 | 1 | 0 | 19 | 1 | 0 | 0 | 0 | 21 |
| 51.0912 - Physician Assistant | 5 | 0 | 0 | 0 | 0 | 0 | 0 | 0 | 0 | 0 | 0 | 0 |
| 51.1005 - Medical Technology | 5 | 0 | 0 | 0 | 0 | 0 | 8 | 0 | 0 | 0 | 0 | 8 |
| 51.1501 - Alcohol/Drug Abuse Studies | 5 | 0 | 0 | 0 | 0 | 0 | 10 | 1 | 0 | 0 | 2 | 13 |
| 51.1503 - Social Work | 5 | 0 | 1 | 0 | 0 | 0 | 14 | 0 | 0 | 0 | 0 | 15 |
| 52.0201 - Business-Management | 5 | 0 | 0 | 0 | 0 | 0 | 55 | 2 | 0 | 0 | 0 | 57 |
| 52.0301 - Accounting | 5 | 0 | 0 | 0 | 0 | 0 | 36 | 1 | 0 | 0 | 1 | 38 |
| 52.0801 - Finance | 5 | 0 | 0 | 0 | 0 | 0 | 26 | 1 | 0 | 0 | 1 | 28 |
| 52.1001 - Human Resource Management | 5 | 0 | 0 | 0 | 0 | 1 | 5 | 1 | 0 | 0 | 0 | 7 |
| 521401 - Marketing | 5 | 0 | 0 | 0 | 0 | 1 | 14 | 3 | 0 | 0 | 0 | 18 |
| 54.0101 - History | 5 | 0 | 0 | 1 | 0 | 0 | 15 | 4 | 0 | 0 | 1 | 21 |
| Total Level 5 | | 5 | 4 | 9 | 3 | 8 | 821 | 53 | 0 | 10 | 913 | |

COMPLETIONS FROM JULY 1, 2009 TO JUNE 30, 2010

BY LEVEL - All MAJORS MALE & FEMALE

| CIP | LEVEL | ALIEN | BLACK | AM INDIAN | ASIAN | HISPANIC | WHITE | UNKN | PACIFIC MULTI | | TOTAL |
|--|-------|-------|-------|-----------|-------|----------|-------|------|---------------|--------|-------|
| | | | | | | | | | ISLANDER | RACIAL | |
| 44.0401 - State Govt Leadship Excellence | 6 | 0 | 0 | 0 | 0 | 0 | 13 | 0 | 0 | 0 | 13 |
| 51.0702 - Long Term Care Management | 6 | 0 | 0 | 0 | 0 | 0 | 1 | 0 | 0 | 0 | 1 |
| 51.1501 - Alcohol and Drug Studies | 6 | 0 | 0 | 0 | 0 | 0 | 2 | 0 | 0 | 0 | 2 |
| Total Level 6 | | 0 | 0 | 0 | 0 | 0 | 16 | 0 | 0 | 0 | 16 |
| 09.0102 - Mass Comm | 7 | 0 | 0 | 0 | 0 | 0 | 0 | 0 | 0 | 0 | 0 |
| 11.0101 - Computer Science | 7 | 1 | 0 | 0 | 0 | 0 | 3 | 0 | 0 | 0 | 4 |
| 13.0301 - Curriculum & Instruction | 7 | 0 | 0 | 0 | 0 | 0 | 0 | 0 | 0 | 0 | 0 |
| 13.0401 - Education Adminstration | 7 | 1 | 1 | 0 | 0 | 0 | 47 | 0 | 0 | 1 | 50 |
| 13.0501 - technology for Ed&Training | 7 | 0 | 0 | 1 | 0 | 0 | 11 | 0 | 0 | 1 | 13 |
| 13.1001 - Special Education | 7 | 0 | 0 | 0 | 0 | 0 | 11 | 0 | 0 | 0 | 11 |
| 13.1101 - Ed Counseling | 7 | 0 | 0 | 0 | 0 | 0 | 0 | 0 | 0 | 0 | 0 |
| 13.1202 - Elementary Education | 7 | 0 | 0 | 0 | 0 | 0 | 17 | 0 | 0 | 0 | 17 |
| 13.1205 - Secondary Education | 7 | 0 | 0 | 0 | 0 | 0 | 9 | 0 | 0 | 0 | 9 |
| 13.1314 - Health, Phys Education &Recrea | 7 | 0 | 1 | 0 | 0 | 0 | 12 | 0 | 0 | 0 | 13 |
| 13.1331 - Speech Communication | 7 | 1 | 0 | 0 | 0 | 0 | 8 | 0 | 0 | 0 | 9 |
| 23.0101 - English | 7 | 0 | 0 | 0 | 1 | 0 | 13 | 1 | 0 | 0 | 15 |
| 23.1001 - Communication Studies | 7 | 0 | 0 | 0 | 0 | 0 | 0 | 0 | 0 | 0 | 0 |
| 24.0101 - Interdisciplinary Studies | 7 | 0 | 0 | 1 | 0 | 0 | 4 | 0 | 0 | 0 | 5 |
| 26.0101 - Biology | 7 | 0 | 0 | 0 | 0 | 0 | 3 | 0 | 0 | 0 | 3 |
| 26.0102 - Biomedical Sciences | 7 | 0 | 0 | 0 | 0 | 0 | 1 | 0 | 0 | 0 | 1 |
| 27.0101 - Mathematics | 7 | 0 | 0 | 0 | 0 | 0 | 1 | 0 | 0 | 0 | 1 |
| 30.0101 - Biological & Physical Sciences | 7 | 0 | 0 | 0 | 0 | 0 | 1 | 0 | 0 | 0 | 1 |
| 40.0501 - Chemistry | 7 | 3 | 0 | 0 | 0 | 0 | 1 | 0 | 0 | 0 | 4 |
| 42.0101 - Psychology | 7 | 1 | 0 | 0 | 0 | 1 | 7 | 0 | 0 | 0 | 9 |
| 42.0601 - Counseling &Psychology in Ed | 7 | 1 | 0 | 0 | 0 | 0 | 21 | 0 | 0 | 0 | 22 |
| 440000 - Administrative Studies | 7 | 3 | 1 | 0 | 1 | 0 | 39 | 0 | 0 | 0 | 44 |
| 44.0401 - Public Administration | 7 | 0 | 0 | 0 | 0 | 0 | 18 | 1 | 0 | 0 | 19 |
| 45.1001 - Political Science | 7 | 0 | 0 | 0 | 0 | 0 | 2 | 0 | 0 | 0 | 2 |
| 45.1101 - Sociology | 7 | 0 | 0 | 0 | 0 | 0 | 0 | 0 | 0 | 0 | 0 |
| 50.0501 - Theater | 7 | 0 | 0 | 0 | 0 | 0 | 2 | 0 | 0 | 1 | 3 |
| 50.0701 - Art | 7 | 2 | 0 | 0 | 1 | 0 | 1 | 1 | 0 | 0 | 5 |
| 50.0901 - Music | 7 | 0 | 0 | 0 | 0 | 0 | 6 | 1 | 0 | 0 | 7 |

COMPLETIONS FROM JULY 1, 2009 TO JUNE 30, 2010

BY LEVEL - All MAJORS MALE & FEMALE

| CIP | LEVEL | ALIEN | BLACK | AM INDIAN | ASIAN | HISPANIC | WHITE | UNKN | PACIFIC | MULTI | TOTAL |
|---|-------|-------|-------|-----------|-------|----------|-------|------|----------|--------|-------|
| | | | | | | | | | ISLANDER | RACIAL | |
| 50.0902 - Music History & Lit | 7 | 0 | 0 | 0 | 0 | 0 | 0 | 0 | 0 | 0 | 0 |
| 51.0201 - Speech-Language Pathology | 7 | 0 | 0 | 0 | 0 | 0 | 19 | 0 | 0 | 0 | 19 |
| 510912 - Physician Assistant Studies | 7 | 0 | 0 | 1 | 2 | 0 | 17 | 0 | 0 | 0 | 20 |
| 51.2306 - Occupational Therapy | 7 | 0 | 0 | 0 | 0 | 0 | 17 | 1 | 0 | 0 | 18 |
| 51.2308 - Physical Therapy | 7 | 0 | 0 | 0 | 0 | 0 | 0 | 0 | 0 | 0 | 0 |
| 52.0201 - Business Administration | 7 | 3 | 0 | 0 | 0 | 1 | 57 | 0 | 0 | 1 | 62 |
| 52.0301 - Professional Accountancy | 7 | 3 | 0 | 0 | 0 | 0 | 15 | 0 | 0 | 0 | 18 |
| 54.0101 - History, General | 7 | 0 | 0 | 0 | 0 | 0 | 7 | 0 | 0 | 0 | 7 |
| Total Level 7 | | 19 | 3 | 3 | 5 | 2 | 370 | 5 | 0 | 4 | 411 |
| 13.0301 - Curriculum & Instruction | 8 | 0 | 0 | 0 | 0 | 0 | 1 | 0 | 0 | 0 | 1 |
| 13.0401 - Education Administration | 8 | 0 | 0 | 0 | 0 | 0 | 14 | 0 | 0 | 0 | 14 |
| 13.0501 - Ed/Inst Media Design | 8 | 0 | 0 | 0 | 0 | 0 | 2 | 0 | 0 | 0 | 2 |
| 13.1101 - Ed Counseling | 8 | 0 | 0 | 0 | 0 | 0 | 0 | 0 | 0 | 0 | 0 |
| 42.0601 - Counseling Psychology | 8 | 0 | 0 | 0 | 0 | 0 | 12 | 0 | 0 | 0 | 12 |
| 44.0401 - State Govt Ldrship Excellence | 8 | 0 | 0 | 0 | 0 | 0 | 0 | 0 | 0 | 0 | 0 |
| Total Level 8 | | 0 | 0 | 0 | 0 | 0 | 29 | 0 | 0 | 0 | 29 |
| 13.0301 - Curriculum & Instruction | 9 | 1 | 0 | 0 | 1 | 0 | 5 | 0 | 0 | 0 | 7 |
| 13.0401 - Education Administration | 9 | 3 | 0 | 1 | 0 | 0 | 32 | 2 | 0 | 0 | 38 |
| 13.1101 - Ed Counseling | 9 | 0 | 0 | 0 | 0 | 0 | 0 | 0 | 0 | 0 | 0 |
| 23.0101 - English | 9 | 0 | 0 | 0 | 0 | 0 | 1 | 0 | 0 | 0 | 1 |
| 26.0101 - Biological Science | 9 | 0 | 1 | 0 | 0 | 0 | 0 | 1 | 0 | 0 | 2 |
| 26.0102 - Biomedical Sciences | 9 | 2 | 0 | 0 | 0 | 0 | 1 | 0 | 0 | 0 | 3 |
| 27.0303 - Computational Sci & Stats | 9 | 0 | 0 | 0 | 0 | 0 | 0 | 0 | 0 | 0 | 0 |
| 42.0101 - Psychology | 9 | 1 | 0 | 0 | 0 | 0 | 8 | 0 | 0 | 0 | 9 |
| 42.0601 - Counseling Psychology | 9 | 0 | 0 | 0 | 0 | 0 | 2 | 0 | 0 | 0 | 2 |
| Total Level 9 | | 7 | 1 | 1 | 1 | 0 | 49 | 3 | 0 | 0 | 62 |
| 22.0101 - Law | 10 | 0 | 0 | 0 | 0 | 0 | 59 | 4 | 0 | 0 | 63 |
| 51.0202 - Audiology | 10 | 0 | 0 | 0 | 0 | 0 | 3 | 0 | 0 | 0 | 3 |
| 51.1201 - Medicine | 10 | 0 | 0 | 0 | 2 | 0 | 42 | 1 | 0 | 1 | 46 |
| 51.2308 - Physical Therapy | 10 | 0 | 0 | 0 | 0 | 0 | 26 | 0 | 0 | 0 | 26 |

COMPLETIONS FROM JULY 1, 2009 TO JUNE 30, 2010

BY LEVEL - All MAJORS MALE & FEMALE

| CIP | LEVEL | ALIEN | BLACK | AM INDIAN | ASIAN | HISPANIC | WHITE | UNKN | PACIFIC ISLANDER | MULTI RACIAL | TOTAL |
|-----|---------------------|-------|-------|-----------|-------|----------|-------|------|------------------|--------------|-------|
| | Total Level 10 | 0 | 0 | 0 | 2 | 0 | 130 | 5 | 0 | 1 | 138 |
| | GRAND TOTALS | 31 | 10 | 18 | 13 | 16 | 1704 | 75 | 0 | 26 | 1893 |

COMPLETIONS FROM JULY 1, 2010 TO JUNE 30, 2011

BY LEVEL - All MAJORS MALE & FEMALE

| CIP | LEVEL | ALIEN | BLACK | AM | INDIA | ASIAN | HISPANIC | WHITE | UNKN | PACIFIC MULTI | | TOTAL |
|--------------------------------------|-------|-------|-------|----|-------|-------|----------|-------|------|---------------|--------|-------|
| | | | | | | | | | | ISLAND | RACIAL | |
| 24.0102 - General Studies | 5 | 0 | 1 | 0 | 0 | 0 | 0 | 11 | 1 | 0 | 0 | 13 |
| 26.0101 - Biology | 5 | 1 | 0 | 0 | 0 | 1 | 1 | 51 | 0 | 1 | 2 | 57 |
| 27.0101 - Mathematics | 5 | 0 | 1 | 0 | 0 | 0 | 0 | 6 | 0 | 0 | 1 | 8 |
| 30.2001 - International Studies | 5 | 0 | 0 | 0 | 0 | 0 | 1 | 16 | 2 | 0 | 0 | 19 |
| 31.0101 - Recreation | 5 | 1 | 2 | 0 | 0 | 1 | 1 | 11 | 1 | 0 | 2 | 19 |
| 38.0101 - Philosophy | 5 | 0 | 0 | 0 | 0 | 0 | 0 | 4 | 0 | 0 | 0 | 4 |
| 40.0501 - Chemistry | 5 | 0 | 0 | 0 | 0 | 1 | 0 | 15 | 0 | 0 | 1 | 17 |
| 40.0601 - Earth Science | 5 | 0 | 0 | 0 | 0 | 0 | 0 | 8 | 1 | 0 | 0 | 9 |
| 40.0801 - Physics | 5 | 0 | 0 | 0 | 0 | 0 | 0 | 3 | 0 | 0 | 1 | 4 |
| 42.0101 - Psychology | 5 | 0 | 2 | 1 | 0 | 0 | 3 | 114 | 0 | 0 | 2 | 122 |
| 43.0104 - Criminal Justice Studies | 5 | 0 | 3 | 0 | 0 | 0 | 2 | 57 | 1 | 0 | 0 | 63 |
| 45.0201 - Anthropology | 5 | 0 | 0 | 0 | 0 | 1 | 0 | 11 | 1 | 0 | 0 | 13 |
| 45.0601 - Economics | 5 | 0 | 0 | 0 | 0 | 0 | 0 | 12 | 0 | 0 | 0 | 12 |
| 45.1001 - Political Science | 5 | 0 | 0 | 0 | 1 | 0 | 1 | 45 | 1 | 0 | 2 | 50 |
| 45.1101 - Sociology | 5 | 0 | 0 | 0 | 0 | 0 | 0 | 10 | 0 | 0 | 0 | 10 |
| 50.0501 - Theater | 5 | 0 | 0 | 0 | 0 | 0 | 1 | 14 | 1 | 0 | 0 | 16 |
| 50.0701 - Art | 5 | 0 | 0 | 0 | 0 | 0 | 0 | 14 | 0 | 0 | 0 | 14 |
| 50.0901 - Musical Arts | 5 | 0 | 0 | 0 | 0 | 0 | 0 | 2 | 0 | 0 | 0 | 2 |
| 50.0903 - Music Performance, General | 5 | 0 | 0 | 0 | 0 | 0 | 0 | 6 | 0 | 0 | 0 | 6 |
| 51.0201 - Communication Disorders | 5 | 0 | 0 | 0 | 0 | 0 | 1 | 23 | 0 | 1 | 0 | 25 |
| 51.0602 - Dental Hygienist | 5 | 0 | 0 | 0 | 0 | 0 | 0 | 27 | 0 | 0 | 0 | 27 |
| 51.0702 - Health Services Admin | 5 | 0 | 0 | 0 | 0 | 1 | 0 | 29 | 0 | 0 | 0 | 30 |
| 51.0912 - Physician Assistant | 5 | 0 | 0 | 0 | 1 | 0 | 0 | 4 | 0 | 0 | 0 | 5 |
| 51.1005 - Medical Technology | 5 | 0 | 0 | 0 | 0 | 0 | 0 | 4 | 0 | 0 | 0 | 4 |
| 51.1501 - Alcohol/Drug Abuse Studies | 5 | 0 | 0 | 0 | 0 | 1 | 0 | 13 | 0 | 0 | 0 | 14 |
| 51.1503 - Social Work | 5 | 0 | 0 | 0 | 0 | 0 | 0 | 21 | 0 | 0 | 1 | 22 |
| 52.0201 - Business-Management | 5 | 0 | 0 | 0 | 1 | 0 | 0 | 63 | 0 | 0 | 2 | 66 |
| 52.0301 - Accounting | 5 | 1 | 0 | 0 | 0 | 1 | 0 | 45 | 0 | 1 | 1 | 49 |
| 52.0801 - Finance | 5 | 0 | 1 | 0 | 0 | 0 | 0 | 31 | 0 | 0 | 0 | 32 |
| 52.1001 - Human Resource Management | 5 | 0 | 0 | 0 | 0 | 0 | 0 | 9 | 0 | 0 | 0 | 9 |
| 52.1401 - Marketing | 5 | 0 | 1 | 0 | 0 | 0 | 0 | 32 | 0 | 0 | 0 | 33 |
| 54.0101 - History | 5 | 0 | 0 | 0 | 0 | 0 | 0 | 30 | 0 | 0 | 0 | 30 |
| Total Level 5 | | 3 | 12 | 8 | 8 | 8 | 16 | 951 | 11 | 3 | 19 | 1031 |

COMPLETIONS FROM JULY 1, 2010 TO JUNE 30, 2011

BY LEVEL - All MAJORS MALE & FEMALE

| CIP | LEVEL | ALIEN | BLACK | AM | INDIA | ASIAN | HISPANIC | WHITE | UNKN | PACIFIC | MULTI | TOTAL |
|--|-------|-------|-------|----|-------|-------|----------|-------|------|---------|--------|-------|
| | | | | | | | | | | ISLAND | RACIAL | |
| 44.0401 - State Govt Leadship Excellence | 6 | 0 | 0 | 2 | 0 | 0 | 0 | 7 | 3 | 0 | 0 | 12 |
| 51.0702 - Long Term Care Management | 6 | 0 | 1 | 0 | 0 | 0 | 0 | 1 | 0 | 0 | 0 | 2 |
| 51.1501 - Alcohol and Drug Studies | 6 | 0 | 0 | 0 | 0 | 0 | 0 | 2 | 0 | 0 | 0 | 2 |
| Total Level 6 | | 0 | 1 | 2 | 0 | 0 | 0 | 10 | 3 | 0 | 0 | 16 |
| 09.0102 - Mass Comm | 7 | 0 | 0 | 0 | 0 | 0 | 0 | 0 | 0 | 0 | 0 | 0 |
| 11.0101 - Computer Science | 7 | 1 | 0 | 0 | 0 | 0 | 0 | 0 | 0 | 0 | 0 | 1 |
| 13.0301 - Curriculum & Instruction | 7 | 0 | 0 | 0 | 0 | 0 | 0 | 0 | 0 | 0 | 0 | 0 |
| 13.0401 - Education Adminstration | 7 | 0 | 1 | 0 | 0 | 0 | 0 | 50 | 1 | 0 | 0 | 52 |
| 13.0501 - technology for Ed&Training | 7 | 0 | 0 | 0 | 0 | 0 | 0 | 9 | 0 | 0 | 0 | 9 |
| 13.1001 - Special Education | 7 | 0 | 0 | 1 | 0 | 0 | 0 | 16 | 1 | 0 | 0 | 18 |
| 13.1101 - Ed Counseling | 7 | 0 | 0 | 0 | 0 | 0 | 0 | 0 | 0 | 0 | 0 | 0 |
| 13.1202 - Elementary Education | 7 | 0 | 0 | 0 | 0 | 0 | 0 | 17 | 0 | 0 | 0 | 17 |
| 13.1205 - Secondary Education | 7 | 0 | 0 | 0 | 0 | 0 | 0 | 15 | 0 | 0 | 0 | 15 |
| 13.1314 - Health, Phys Education &Recrea | 7 | 0 | 3 | 0 | 0 | 0 | 0 | 17 | 1 | 0 | 0 | 21 |
| 13.1331 - Speech Communication | 7 | 0 | 0 | 0 | 0 | 0 | 0 | 5 | 0 | 0 | 0 | 5 |
| 23.0101 - English | 7 | 0 | 0 | 0 | 0 | 0 | 0 | 13 | 0 | 0 | 0 | 13 |
| 23.1001 - Communication Studies | 7 | 0 | 0 | 0 | 0 | 0 | 0 | 0 | 0 | 0 | 0 | 0 |
| 24.0101 - Interdisciplinary Studies | 7 | 1 | 0 | 0 | 0 | 0 | 0 | 6 | 0 | 0 | 1 | 8 |
| 26.0101 - Biology | 7 | 1 | 0 | 0 | 0 | 0 | 0 | 6 | 0 | 0 | 1 | 8 |
| 26.0102 - Biomedical Sciences | 7 | 0 | 0 | 0 | 0 | 0 | 0 | 2 | 0 | 0 | 0 | 2 |
| 27.0101 - Mathematics | 7 | 0 | 0 | 0 | 1 | 1 | 1 | 1 | 0 | 0 | 0 | 3 |
| 30.0101 - Biological & Physical Sciences | 7 | 0 | 0 | 0 | 0 | 0 | 0 | 0 | 0 | 0 | 0 | 0 |
| 40.0501 - Chemistry | 7 | 8 | 0 | 0 | 0 | 0 | 0 | 1 | 0 | 0 | 0 | 9 |
| 40.0801 - Physics | 7 | 0 | 0 | 0 | 0 | 0 | 0 | 1 | 0 | 0 | 0 | 1 |
| 42.0101 - Psychology | 7 | 0 | 0 | 1 | 0 | 0 | 0 | 4 | 0 | 0 | 0 | 5 |
| 42.0601 - Counseling &Psychology in Ed | 7 | 0 | 0 | 0 | 0 | 0 | 0 | 15 | 0 | 0 | 0 | 15 |
| 44.0000 - Administrative Studies | 7 | 0 | 1 | 0 | 0 | 0 | 1 | 37 | 3 | 0 | 0 | 42 |
| 44.0401 - Public Administration | 7 | 0 | 0 | 0 | 0 | 0 | 0 | 28 | 1 | 0 | 0 | 29 |
| 45.1001 - Political Science | 7 | 1 | 0 | 0 | 0 | 0 | 1 | 5 | 0 | 0 | 0 | 7 |
| 45.1101 - Sociology | 7 | 0 | 0 | 0 | 0 | 0 | 0 | 0 | 0 | 0 | 0 | 0 |
| 50.0501 - Theater | 7 | 0 | 0 | 0 | 0 | 0 | 0 | 5 | 0 | 0 | 0 | 5 |

COMPLETIONS FROM JULY 1, 2010 TO JUNE 30, 2011

BY LEVEL - All MAJORS MALE & FEMALE

| CIP | LEVEL | ALIEN | BLACK | AM | INDIA | ASIAN | HISPANIC | WHITE | UNKN | PACIFIC MULTI | | TOTAL |
|---|-------|-------|-------|----|-------|-------|----------|-------|------|---------------|--------|-------|
| | | | | | | | | | | ISLANDER | RACIAL | |
| 50.0701 - Art | 7 | 0 | 0 | 0 | 0 | 0 | 0 | 3 | 0 | 0 | 0 | 3 |
| 50.0901 - Music | 7 | 0 | 0 | 0 | 0 | 0 | 1 | 6 | 0 | 0 | 0 | 7 |
| 50.0902 - Music History & Lit | 7 | 0 | 0 | 0 | 0 | 0 | 0 | 0 | 0 | 0 | 0 | 0 |
| 51.0201 - Speech-Language Pathology | 7 | 0 | 0 | 0 | 2 | 0 | 23 | 0 | 0 | 0 | 0 | 25 |
| 51.0912 - Physician Assistant Studies | 7 | 0 | 0 | 0 | 0 | 0 | 20 | 0 | 0 | 0 | 0 | 20 |
| 51.2306 - Occupational Therapy | 7 | 0 | 0 | 0 | 0 | 1 | 21 | 0 | 0 | 0 | 0 | 22 |
| 51.2308 - Physical Therapy | 7 | 0 | 0 | 0 | 0 | 0 | 0 | 0 | 0 | 0 | 0 | 0 |
| 52.0201 - Business Administration | 7 | 0 | 0 | 0 | 1 | 0 | 56 | 0 | 0 | 0 | 0 | 57 |
| 52.0301 - Professional Accountancy | 7 | 0 | 0 | 0 | 0 | 0 | 19 | 0 | 0 | 0 | 0 | 19 |
| 54.0101 - History, General | 7 | 1 | 0 | 0 | 0 | 0 | 45 | 0 | 0 | 0 | 0 | 46 |
| Total Level 7 | | 13 | 5 | 2 | 4 | 5 | 446 | 7 | 0 | 0 | 2 | 484 |
| | | | | | | | | | | | | |
| 13.0301 - Curriculum & Instruction | 8 | 0 | 0 | 0 | 0 | 0 | 0 | 0 | 0 | 0 | 0 | 0 |
| 13.0401 - Education Administration | 8 | 0 | 0 | 1 | 0 | 0 | 27 | 0 | 0 | 0 | 0 | 28 |
| 13.0501 - Ed/Inst Media Design | 8 | 0 | 0 | 0 | 0 | 0 | 0 | 0 | 0 | 0 | 0 | 0 |
| 13.1101 - Ed Counseling | 8 | 0 | 0 | 0 | 0 | 0 | 0 | 0 | 0 | 0 | 0 | 0 |
| 42.0601 - Counseling Psychology | 8 | 0 | 0 | 0 | 0 | 0 | 9 | 0 | 0 | 0 | 0 | 9 |
| 44.0401 - State Govt Ldrship Excellence | 8 | 0 | 0 | 0 | 0 | 0 | 0 | 0 | 0 | 0 | 0 | 0 |
| Total Level 8 | | 0 | 0 | 1 | 0 | 0 | 36 | 0 | 0 | 0 | 0 | 37 |
| | | | | | | | | | | | | |
| 13.0301 - Curriculum & Instruction | 9 | 0 | 0 | 0 | 0 | 0 | 7 | 0 | 0 | 0 | 0 | 7 |
| 13.0401 - Education Administration | 9 | 0 | 0 | 1 | 0 | 0 | 22 | 0 | 0 | 1 | 0 | 24 |
| 13.1101 - Ed Counseling | 9 | 0 | 0 | 0 | 0 | 0 | 0 | 0 | 0 | 0 | 0 | 0 |
| 14.0501 - Biomedical Engineering | 9 | 0 | 0 | 0 | 0 | 0 | 1 | 0 | 0 | 0 | 0 | 1 |
| 23.0101 - English | 9 | 1 | 0 | 0 | 0 | 0 | 0 | 0 | 0 | 0 | 0 | 1 |
| 26.0101 - Biological Science | 9 | 1 | 0 | 0 | 0 | 0 | 0 | 0 | 0 | 0 | 0 | 1 |
| 26.0102 - Biomedical Sciences | 9 | 4 | 0 | 0 | 1 | 0 | 4 | 0 | 0 | 0 | 0 | 9 |
| 27.0303 - Computational Sci & Stats | 9 | 0 | 0 | 0 | 0 | 0 | 2 | 0 | 0 | 0 | 0 | 2 |
| 40.0599 - Materials Chemistry | 9 | 1 | 0 | 0 | 0 | 0 | 0 | 0 | 0 | 0 | 0 | 1 |
| 42.0101 - Psychology | 9 | 0 | 0 | 0 | 0 | 0 | 9 | 0 | 0 | 0 | 0 | 9 |
| 42.0601 - Counseling Psychology | 9 | 0 | 0 | 0 | 0 | 0 | 1 | 0 | 0 | 0 | 0 | 1 |
| 45.1001 - Political Science | 9 | 0 | 0 | 0 | 0 | 0 | 1 | 0 | 0 | 0 | 0 | 1 |
| Total Level 9 | | 7 | 0 | 1 | 1 | 0 | 47 | 0 | 0 | 0 | 1 | 57 |

COMPLETIONS FROM JULY 1, 2010 TO JUNE 30, 2011

BY LEVEL - All MAJORS MALE & FEMALE

| CIP | LEVEL | ALIEN | BLACK | AM INDIAN | ASIAN | HISPANIC | WHITE | UNKN | PACIFIC ISLANDER | MULTI RACIAL | TOTAL |
|----------------------------|-------|-------|-------|-----------|-------|----------|-------|------|------------------|--------------|-------|
| 22.0101 - Law | 10 | 0 | 3 | 2 | 0 | 1 | 49 | 0 | 0 | 0 | 55 |
| <i>51.0202 - Audiology</i> | 10 | 0 | 0 | 0 | 0 | 0 | 5 | 0 | 0 | 0 | 5 |
| 51.1201 - Medicine | 10 | 0 | 0 | 2 | 0 | 0 | 48 | 0 | 0 | 0 | 50 |
| 51.2308 - Physical Therapy | 10 | 0 | 0 | 0 | 0 | 0 | 33 | 0 | 0 | 0 | 33 |
| Total Level 10 | | 0 | 3 | 4 | 0 | 1 | 135 | 0 | 0 | 0 | 143 |
| GRAND TOTALS | | 23 | 27 | 20 | 18 | 28 | 1925 | 26 | 3 | 24 | 2094 |