

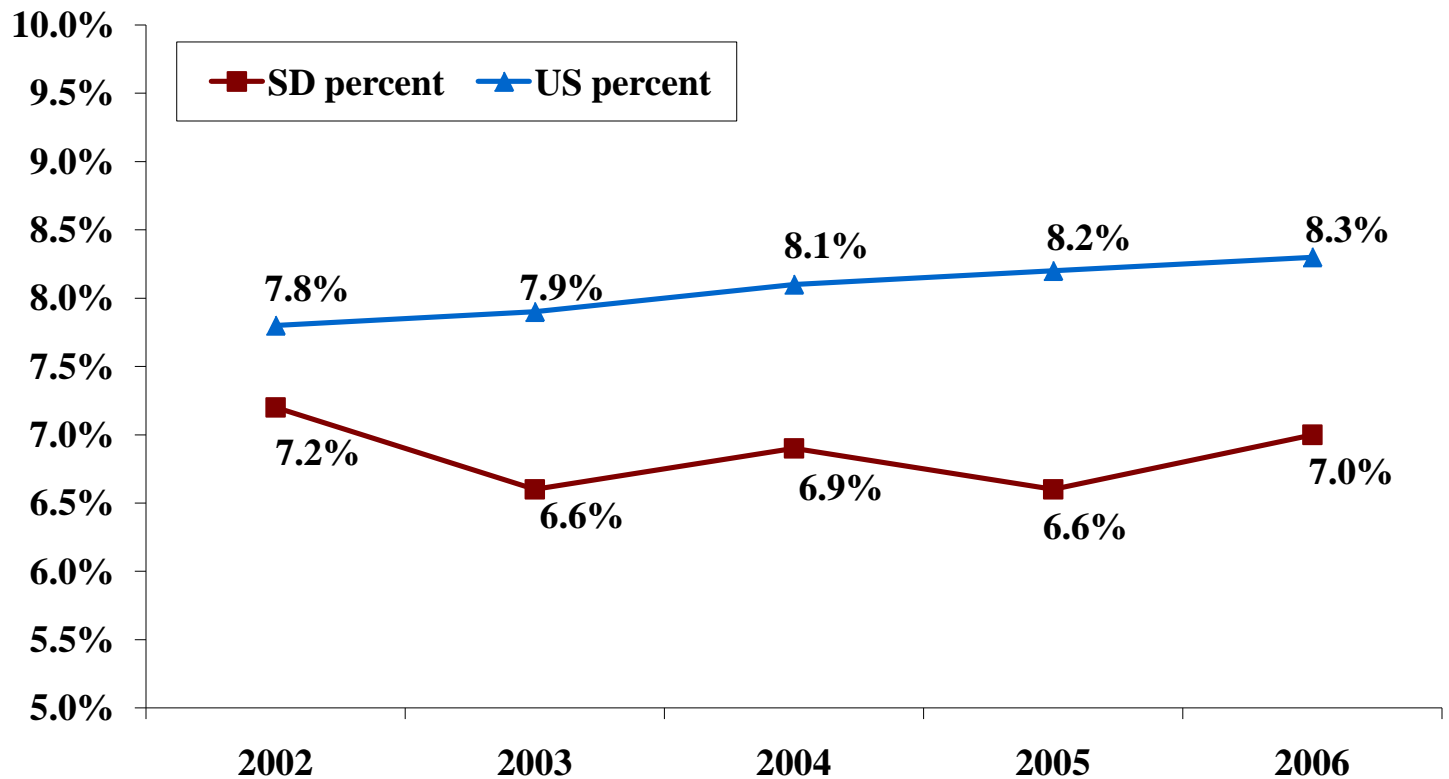


Historical KIDS COUNT Data

Indicators of child well-being from the
2009 National Kids Count Data Book

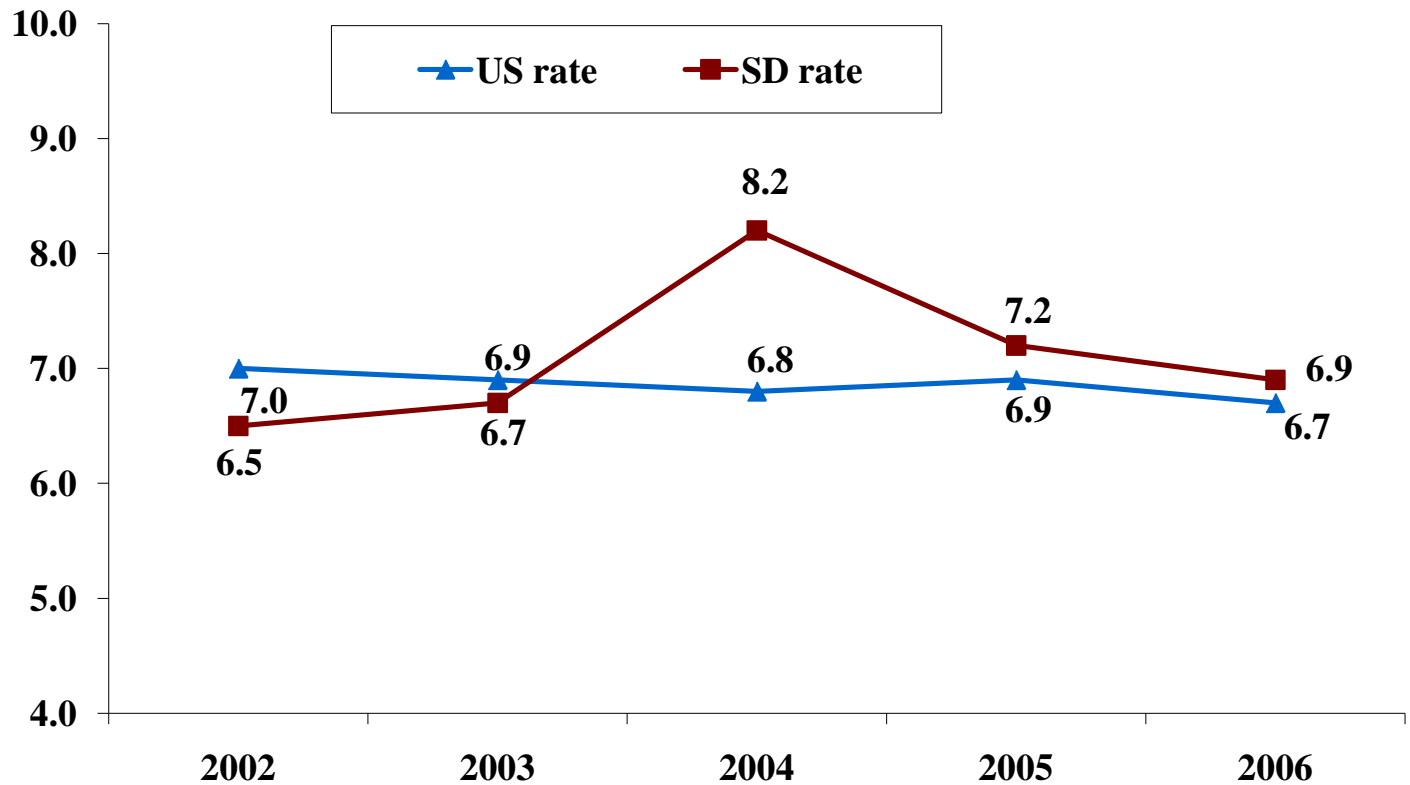
Percent low birth weight babies (**<2,500 grams**)

Historical National Kids Count Data



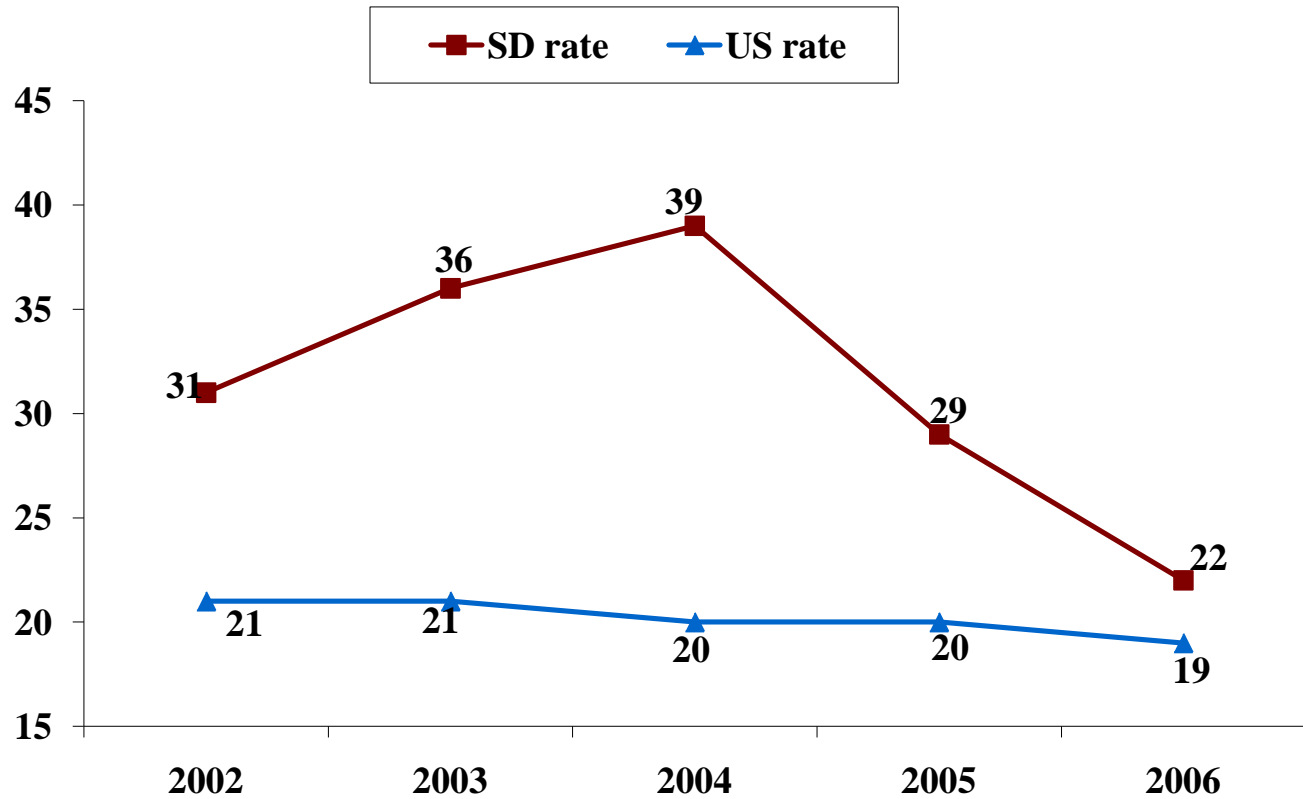
Infant mortality (deaths per 1,000 live births)

Historical National Kids Count Data



Child deaths (deaths per 100,000 children ages 1-14)

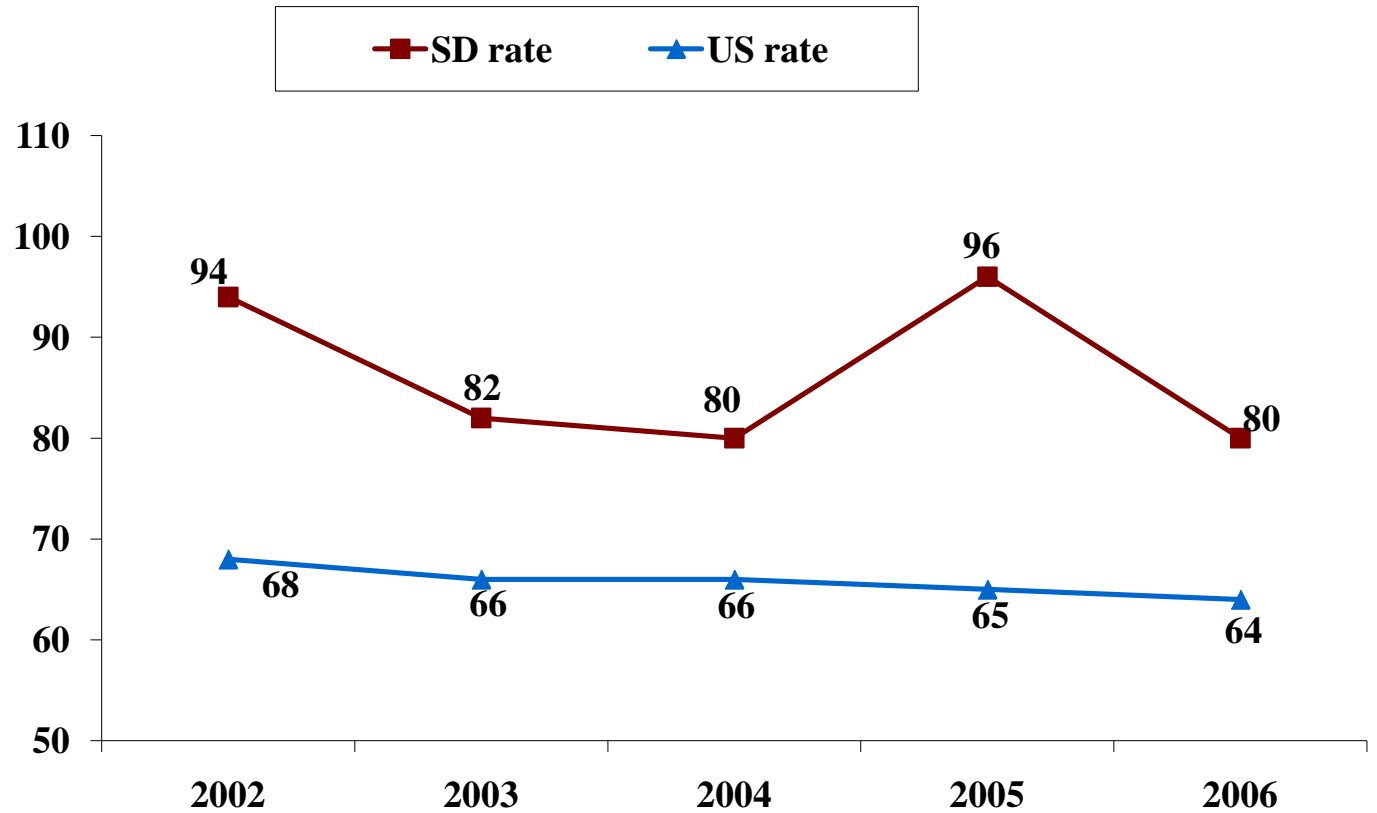
Historical National Kids Count Data



Teen death rate

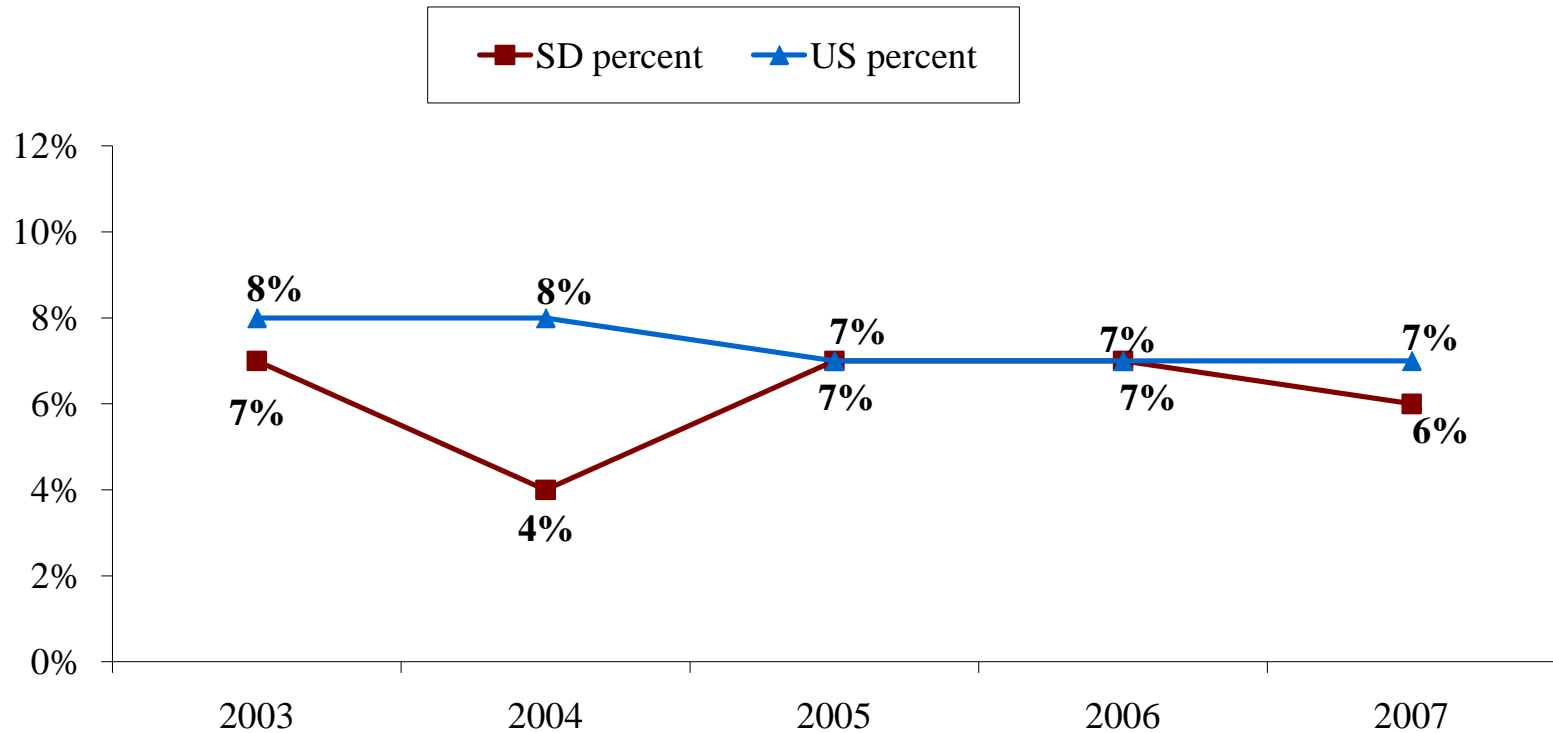
(deaths per 100,000 teens ages 15-19)

Historical National Kids Count Data



Percent of teens who are high school dropouts (ages 16-19)

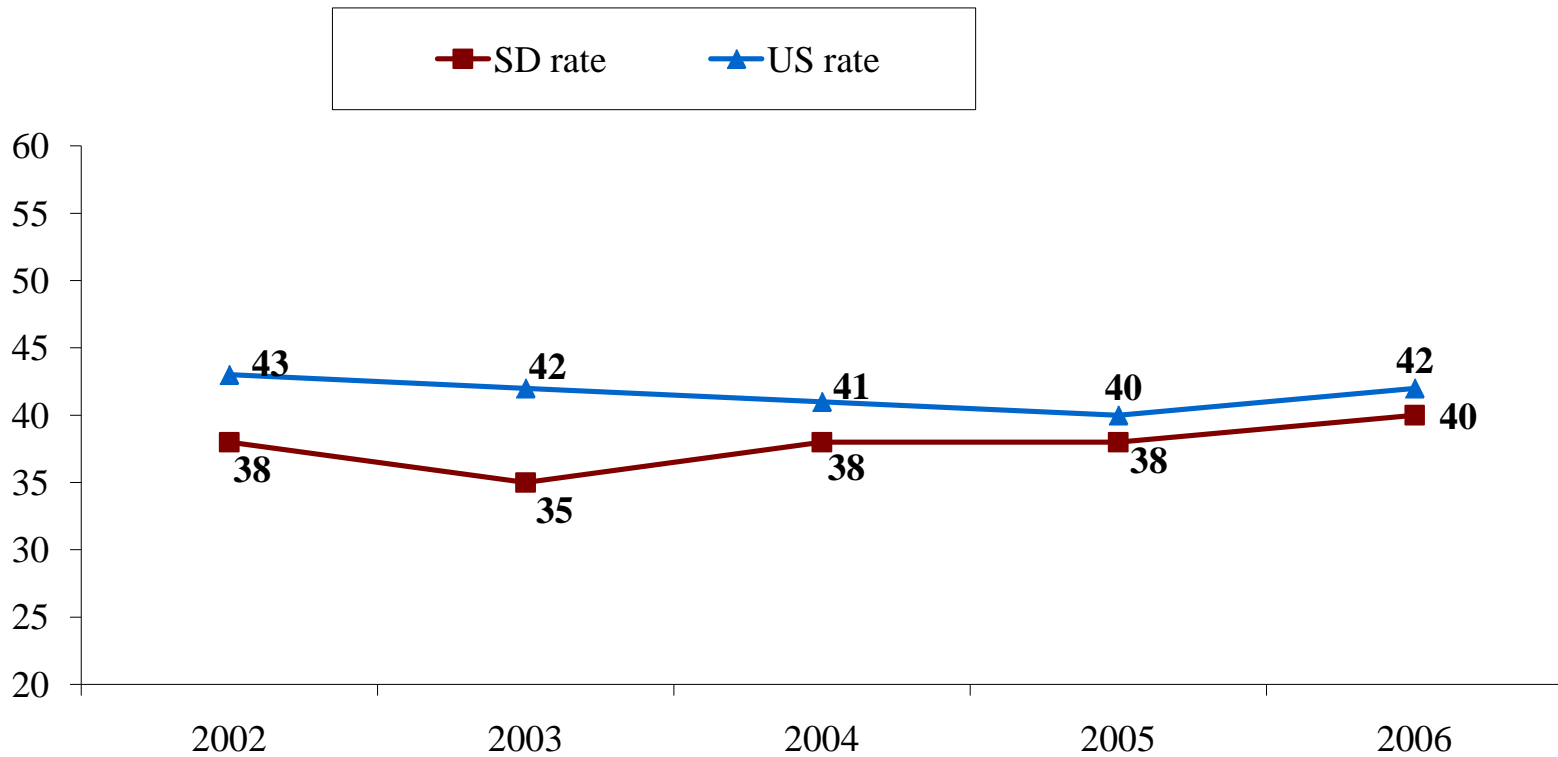
Historical National Kids Count Data



Teen birth rate

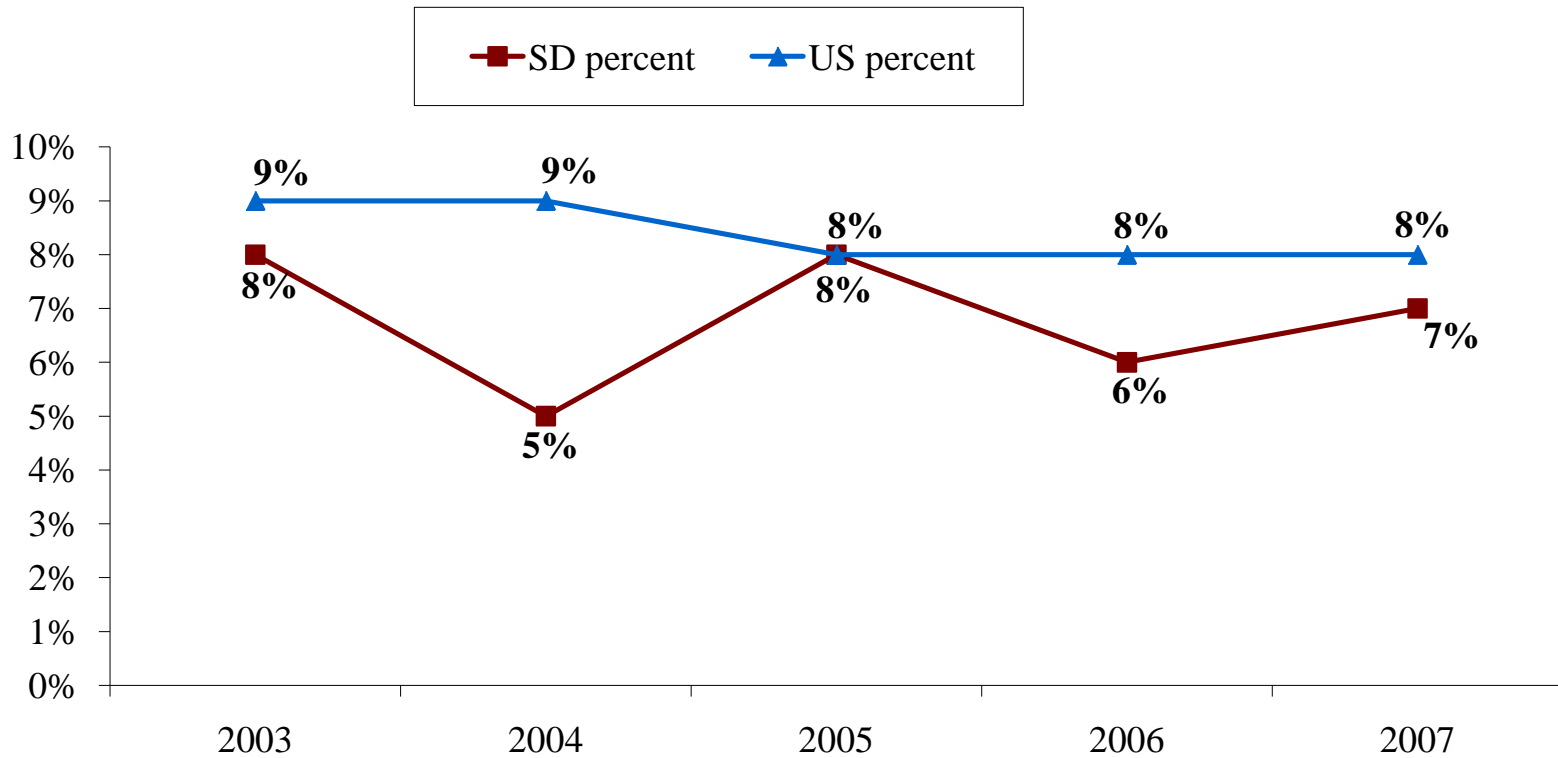
(births per 1,000 females ages 15-19)

Historical National Kids Count Data



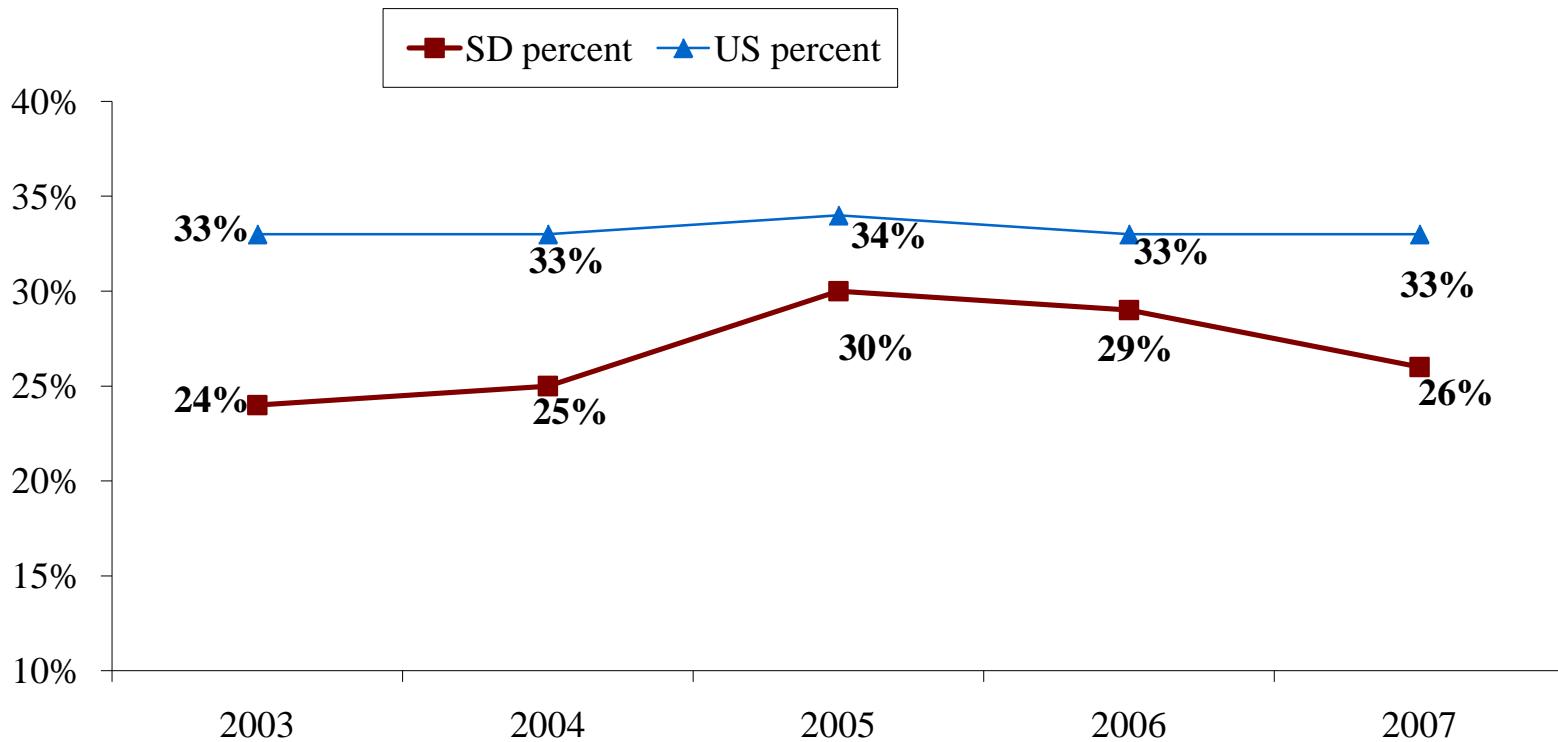
Percent of teens not attending school and not working (ages 16-19)

Historical National Kids Count Data



Percent of children living in families where no parent has full-time, year-round employment

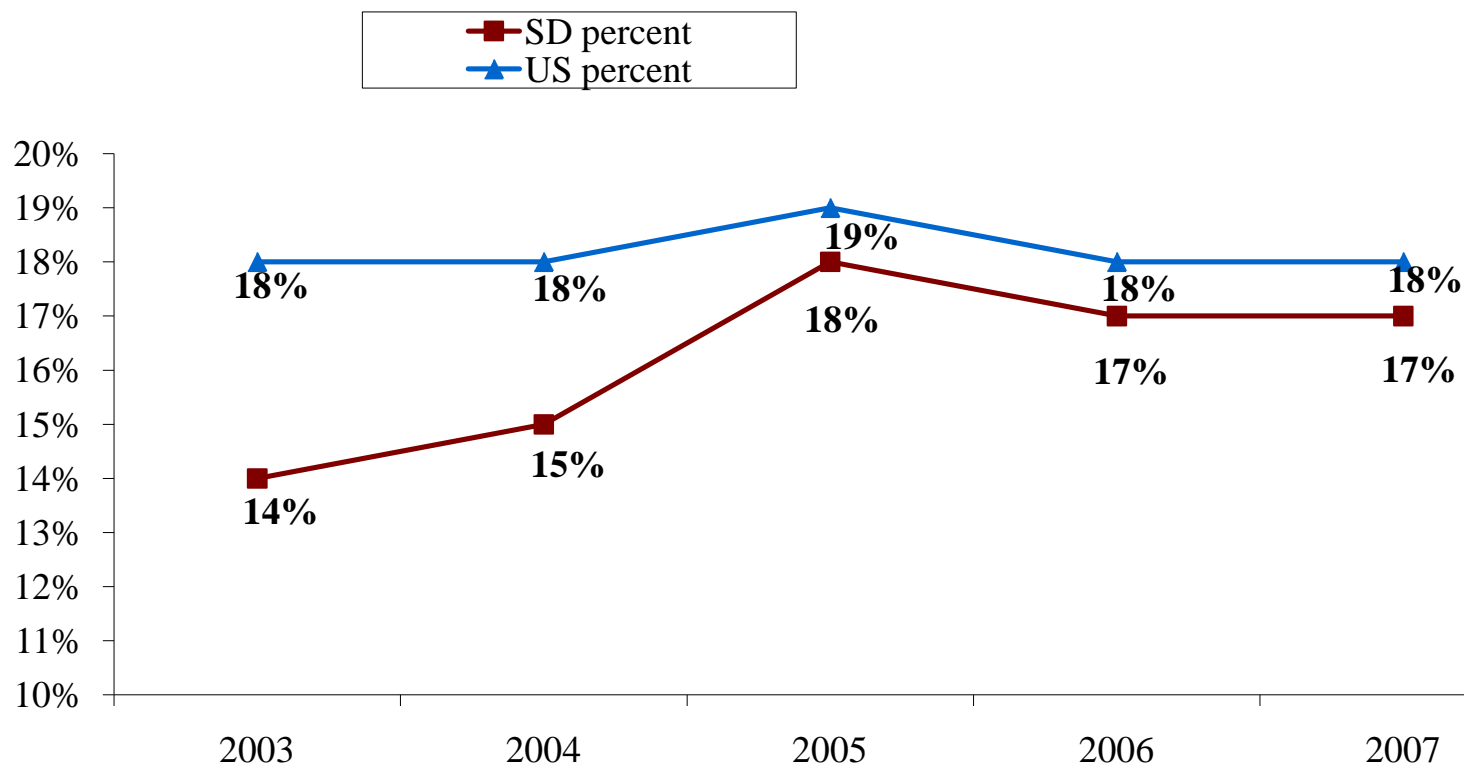
Historical National Kids Count Data



Percent of children in poverty

(income below \$21,027 for a family of two adults and two children in 2007)

Historical National Kids Count Data



Percent of children in single-parent families

Historical National Kids Count Data

