

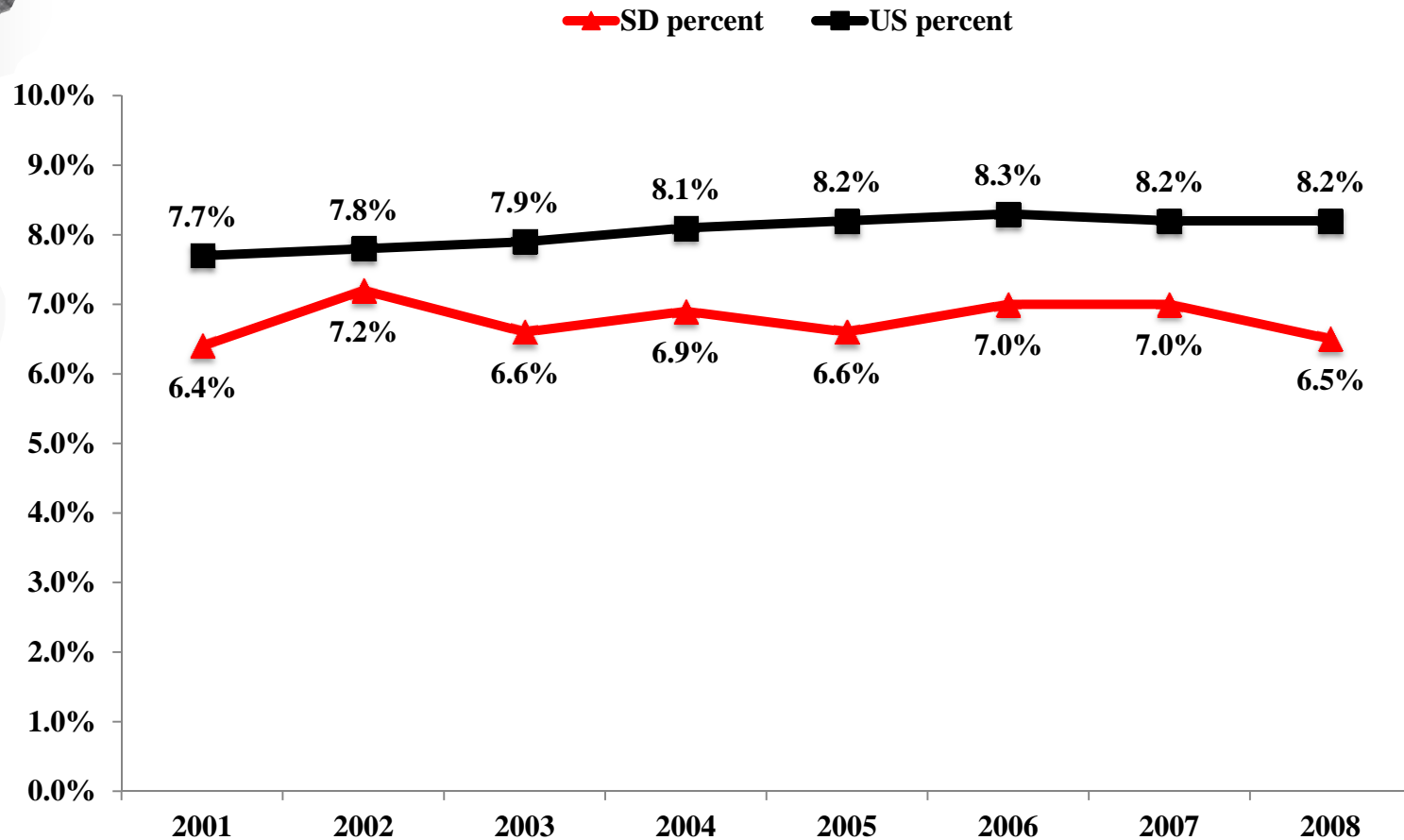


Historical KIDS COUNT Data

Indicators of child well-being from the
2011 National Kids Count Data Book

Percent low birth weight babies (<2,500 grams)

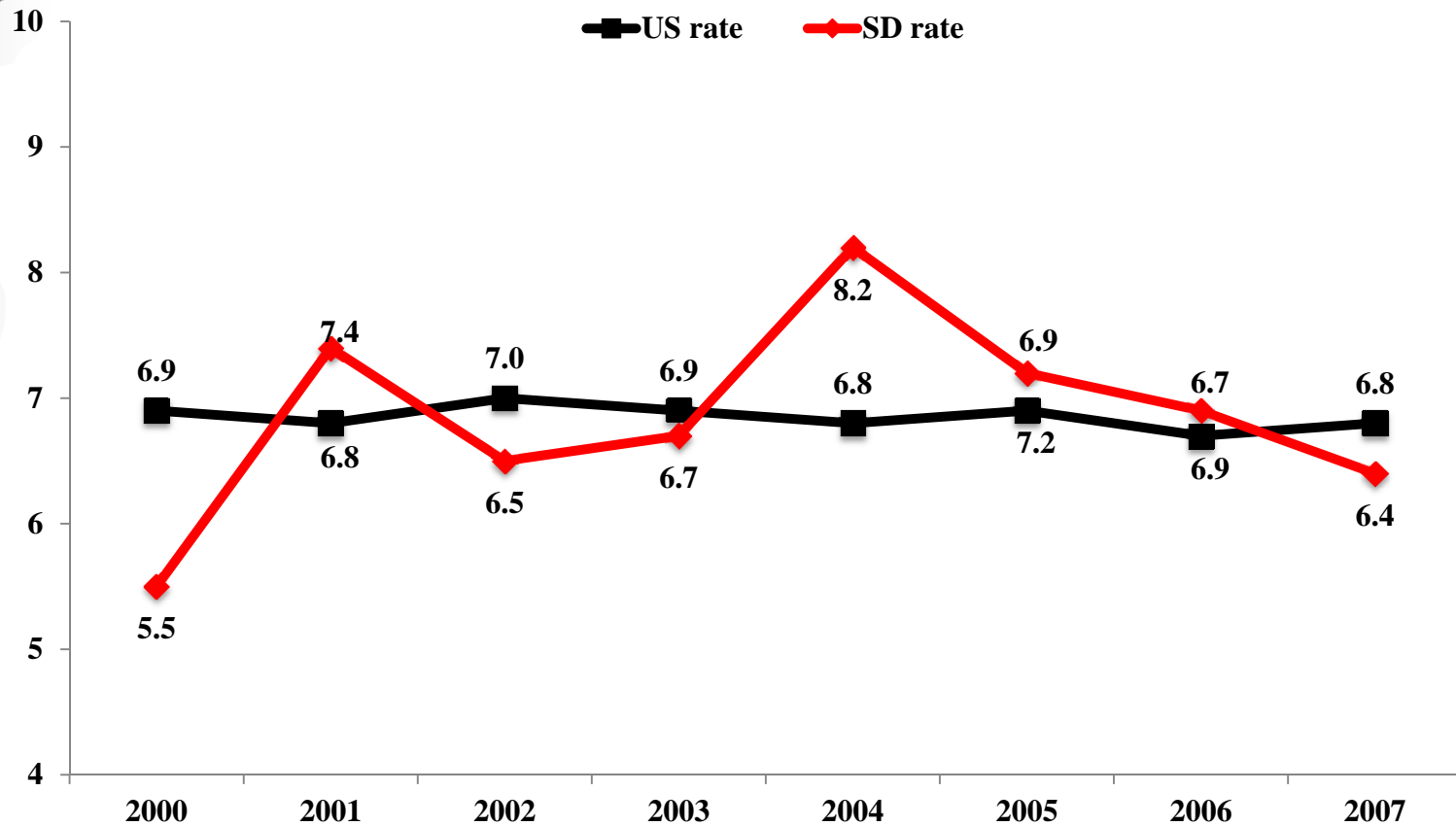
Historical National Kids Count Data



Source: 2011 Kids Count Data Book, The Annie E. Casey Foundation

Infant mortality rate (deaths per 1,000 live births)

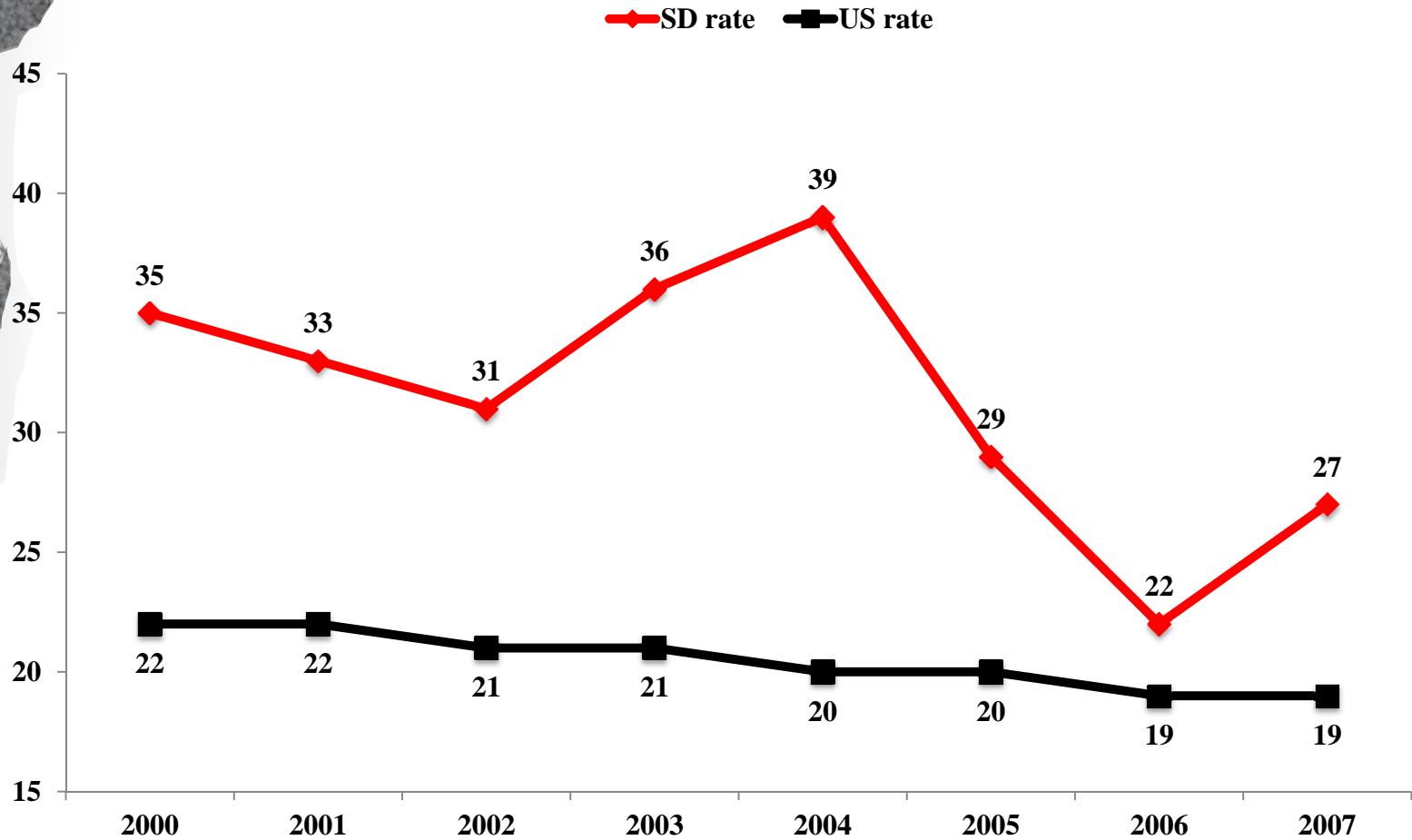
Historical National Kids Count Data



Source: 2011 Kids Count Data Book, The Annie E. Casey Foundation

Child death rate (deaths per 100,000 children ages 1-14)

Historical National Kids Count Data

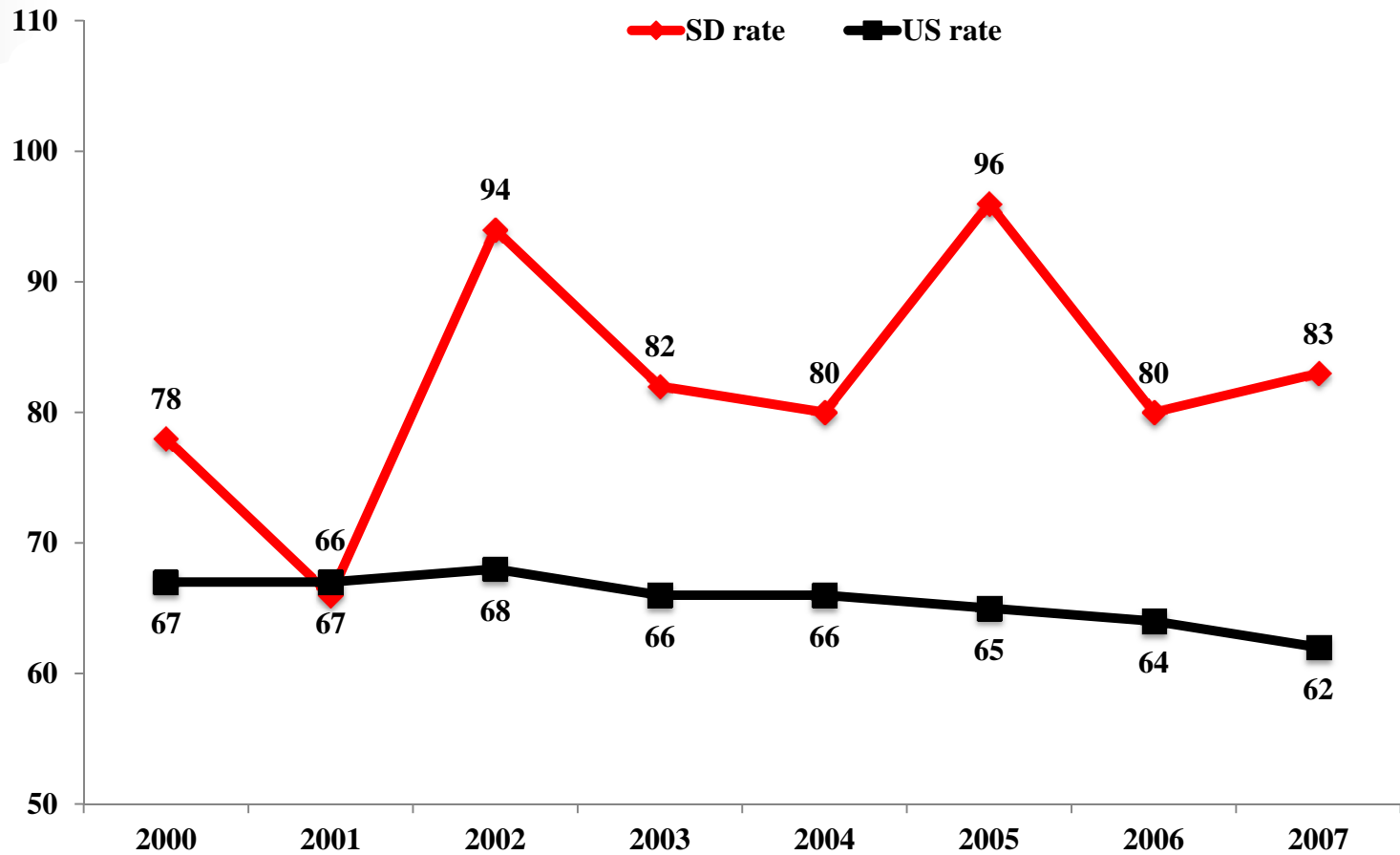


Source: 2011 Kids Count Data Book, The Annie E. Casey Foundation

Teen death rate

(deaths per 100,000 teens ages 15-19)

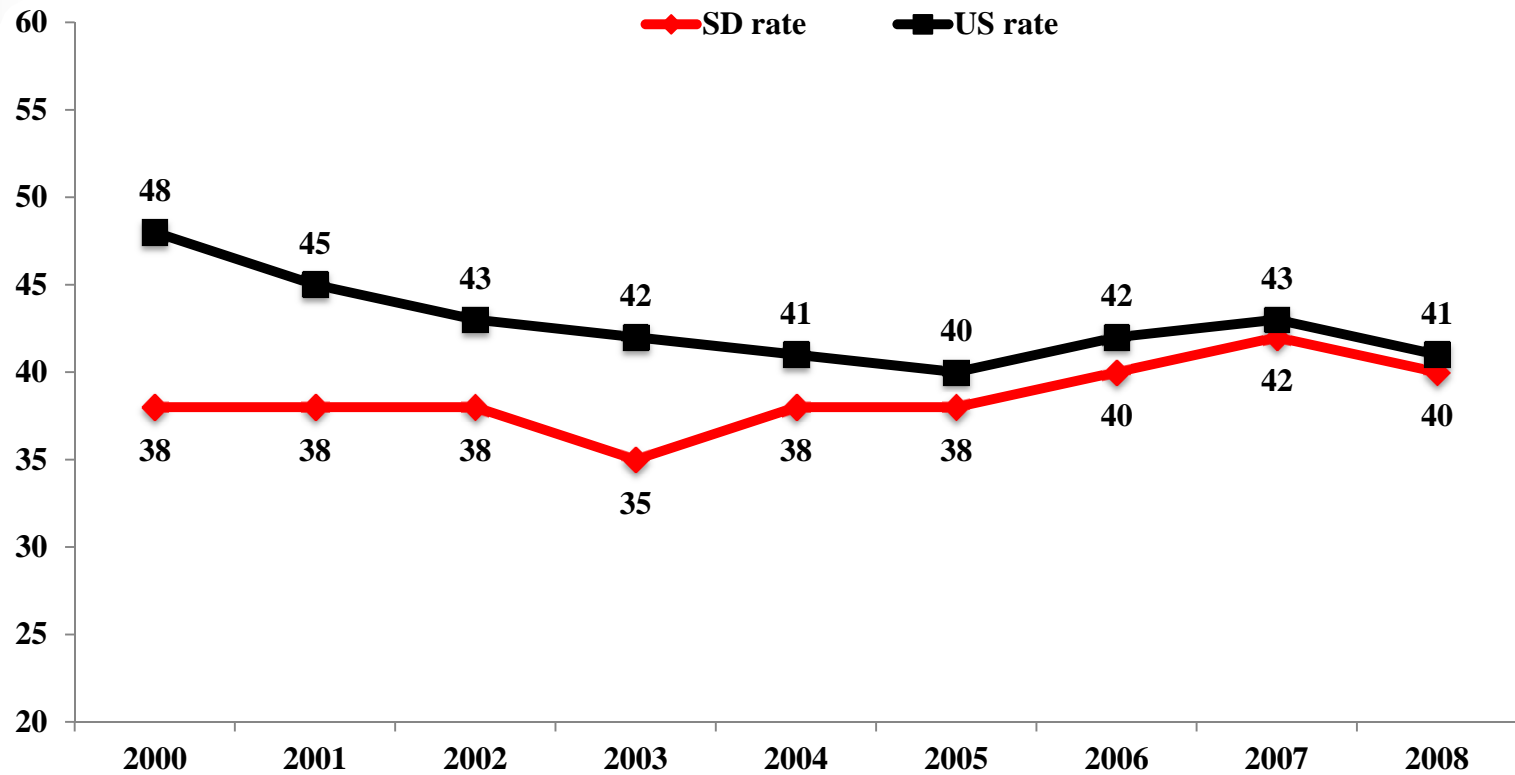
Historical National Kids Count Data



Source: 2011 Kids Count Data Book, The Annie E. Casey Foundation

Teen Birth Rate (births per 1,000 females ages 15-19)

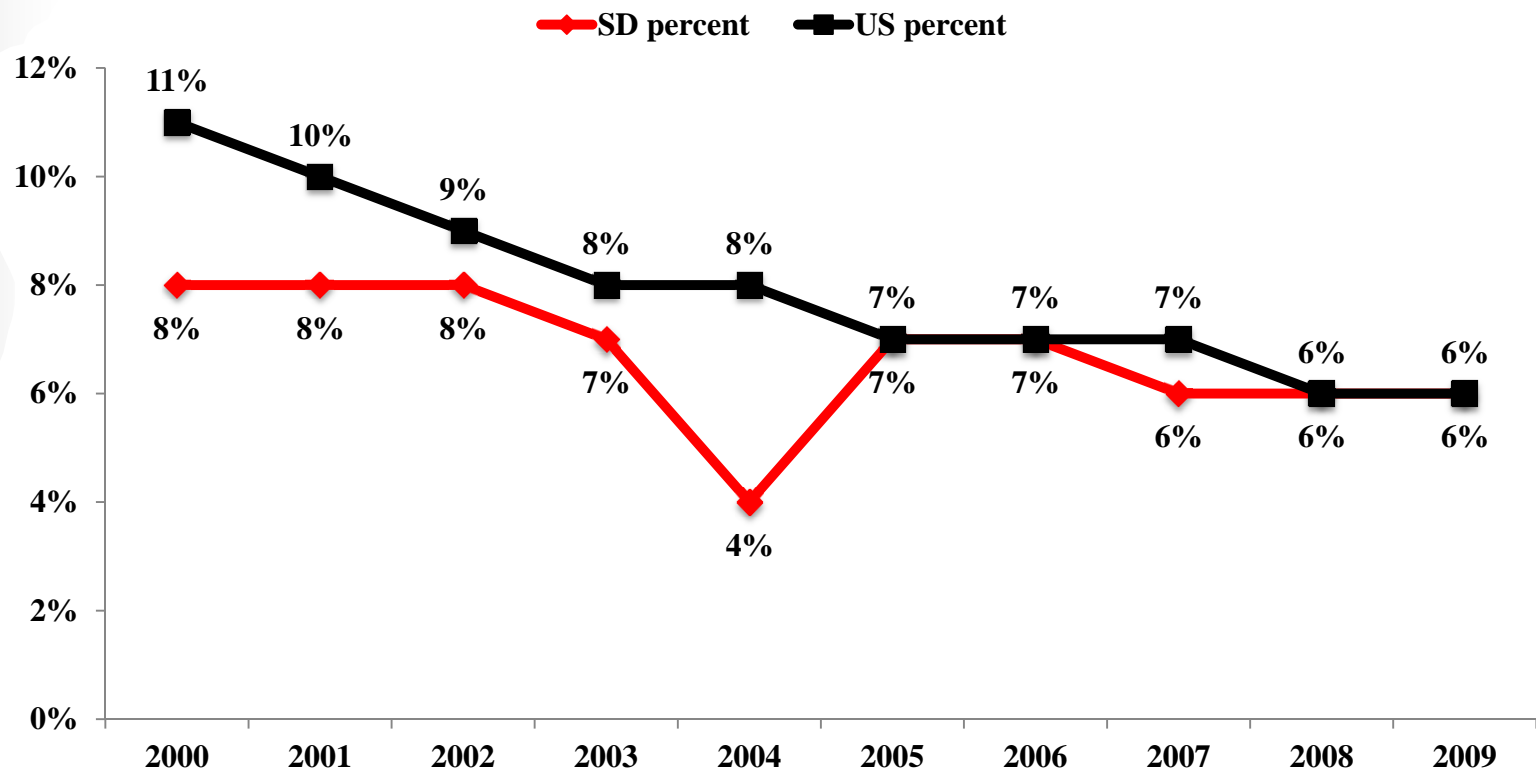
Historical National Kids Count Data



Source: 2011 Kids Count Data Book, The Annie E. Casey Foundation

Percent of teens not in school and not high school graduates (ages 16-19)

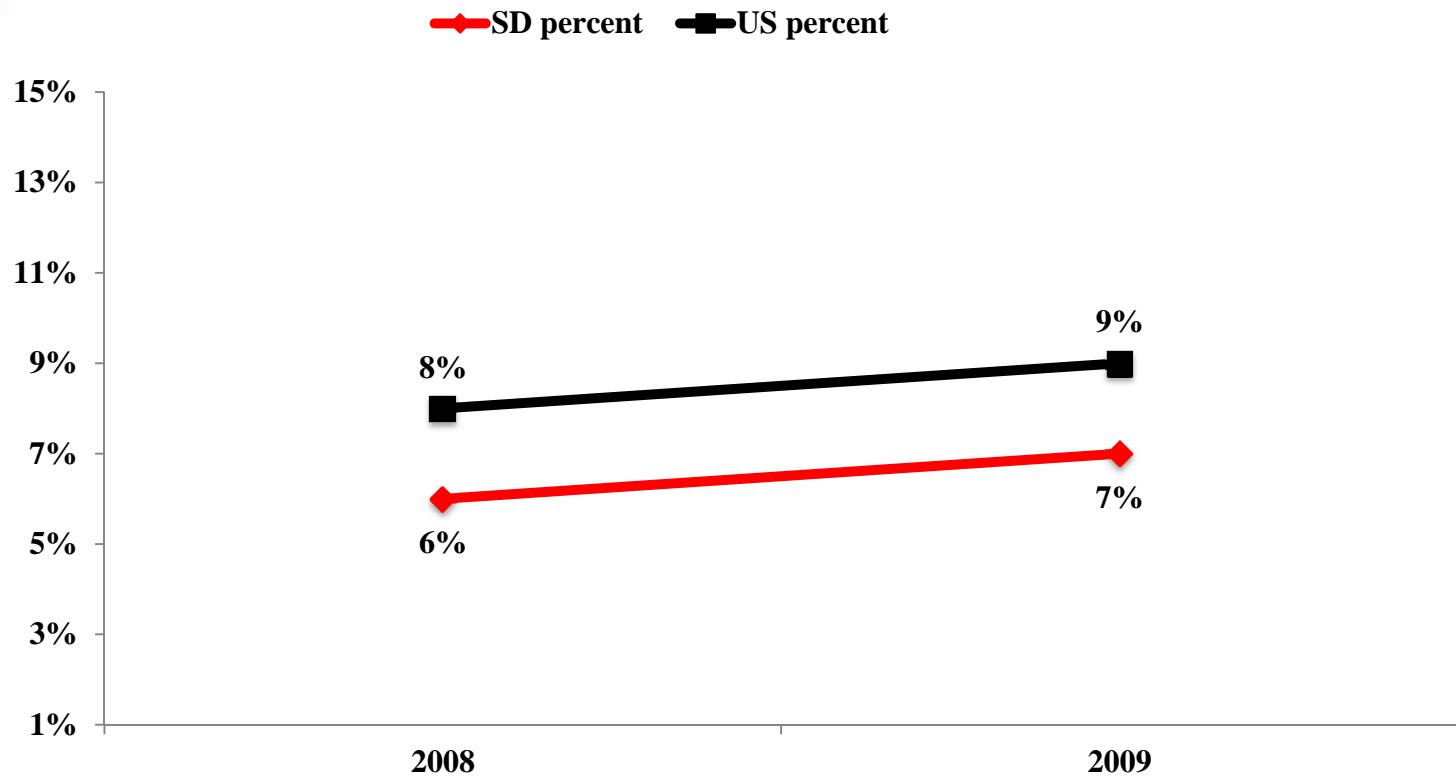
Historical National Kids Count Data



Source: 2011 Kids Count Data Book, The Annie E. Casey Foundation

Percent of teens not attending school and not working (ages 16-19)

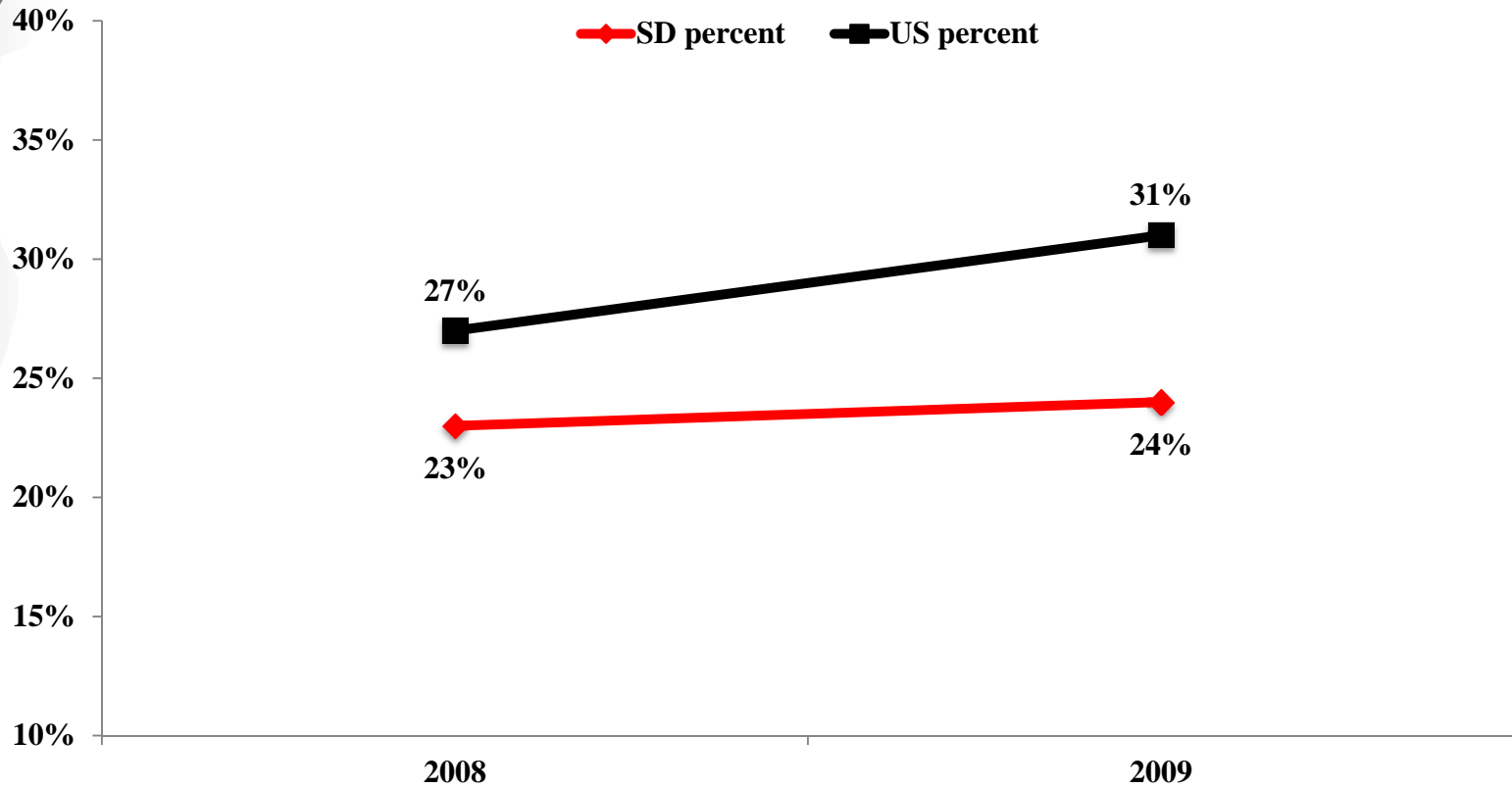
Historical National Kids Count Data



Source: 2011 Kids Count Data Book, The Annie E. Casey Foundation

Percent of children living in families where no parent has full-time, year-round employment

Historical National Kids Count Data

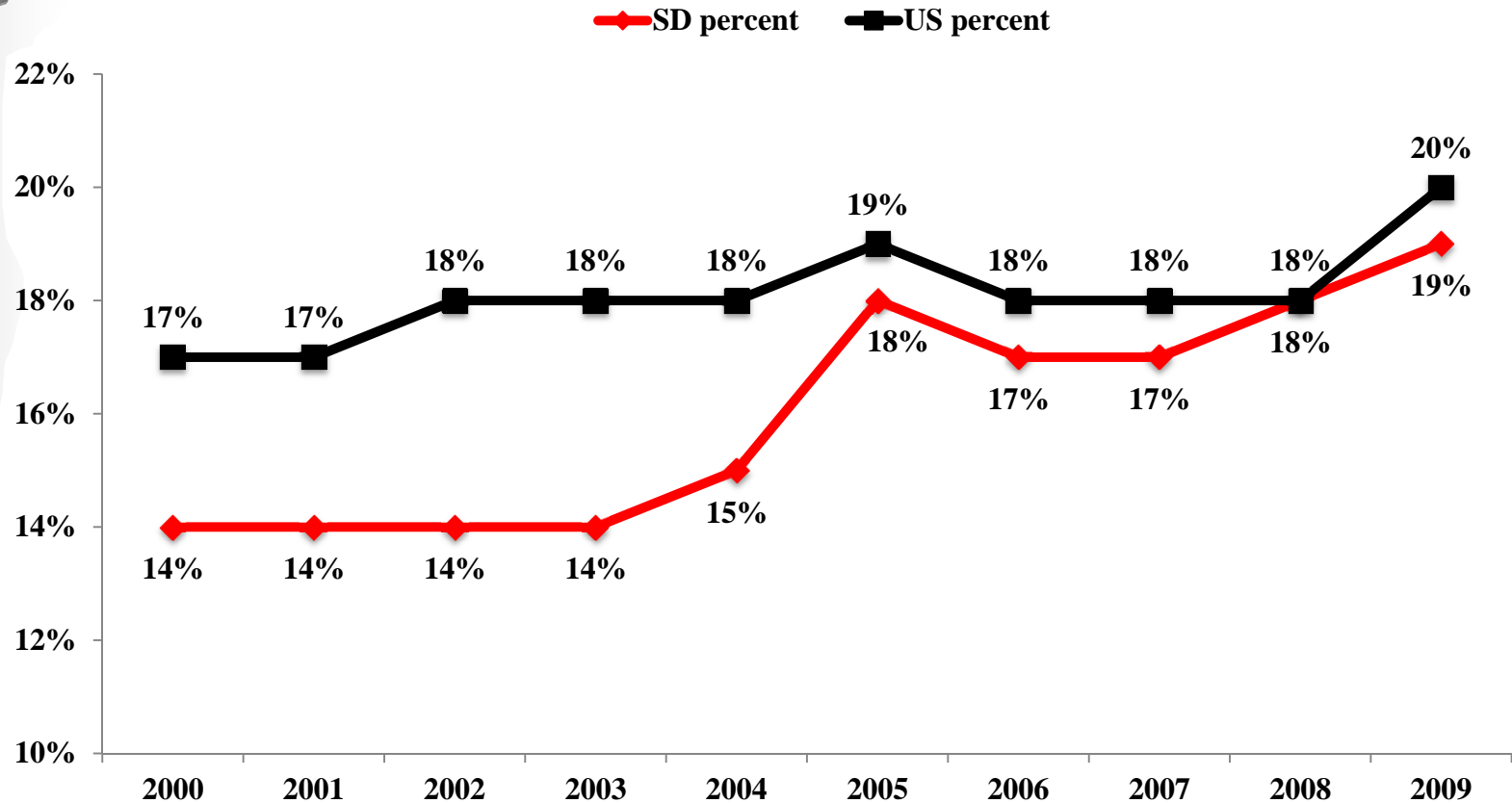


Source: 2011 Kids Count Data Book, The Annie E. Casey Foundation

Percent of children in poverty

(income below \$21,756 for a family of two adults and two children in 2009)

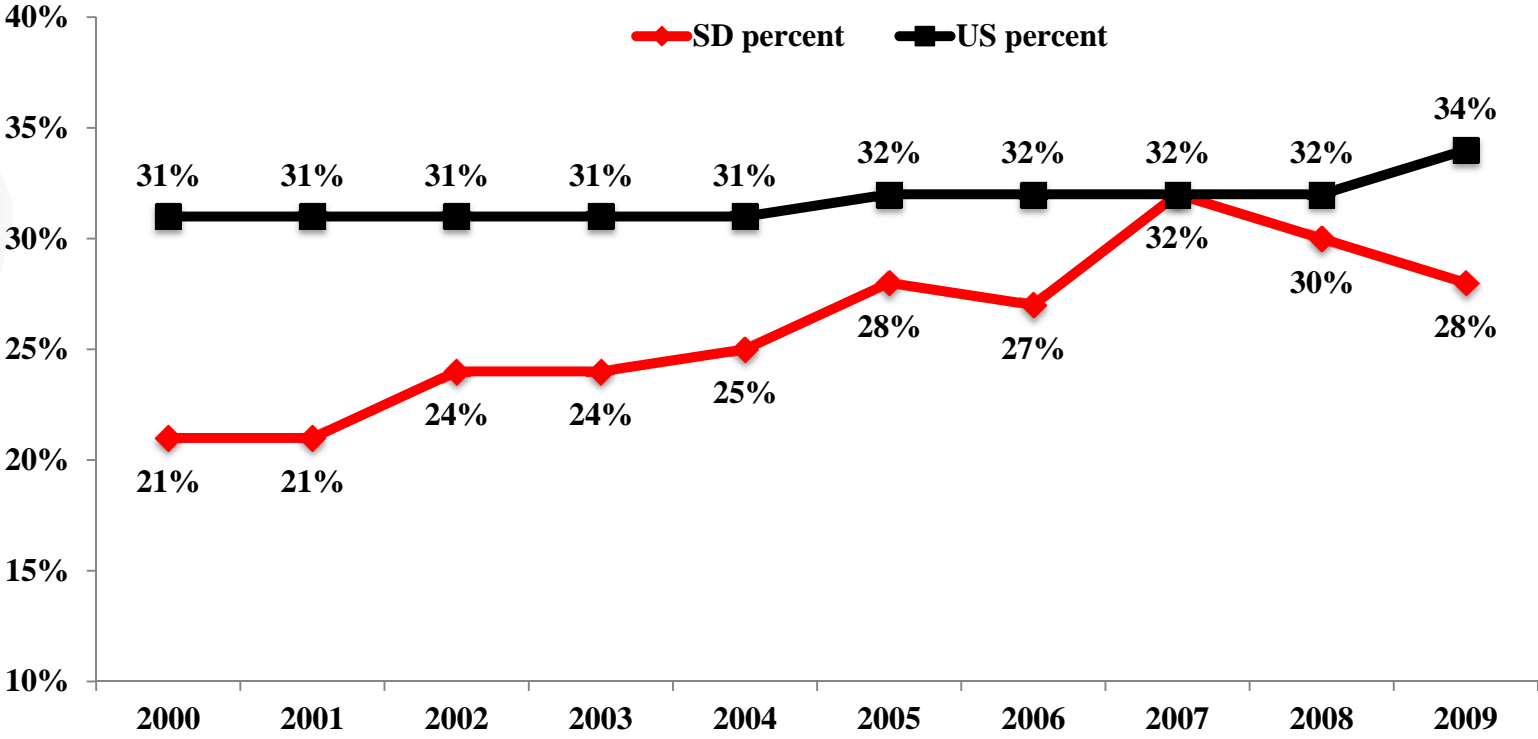
Historical National Kids Count Data



Source: 2011 Kids Count Data Book, The Annie E. Casey Foundation

Percent of children in single-parent families

Historical National Kids Count Data



Source: 2011 Kids Count Data Book, The Annie E. Casey Foundation