



**2005 South Dakota  
KIDS COUNT Factbook  
Indicators of Well-Being**



# Purpose and Goals of KIDS COUNT

## Purpose

- A national and state-by-state effort
- Benchmarks of child well-being
- Secure better futures for all children

## Goals

- To improve data collection
- To increase awareness
- To target specific needs and groups of children

# Key Actors

## Annie E. Casey Foundation

- Established in 1948
- Founder of UPS
- Foster public policies & human service reforms

## South Dakota KIDS COUNT

- Began in 1993
- Part of BRB at USD
- Work with state departments and divisions



# KIDS COUNT Indicators

- **Demographic**

- Population
- Family Profile
- Poverty Thresholds
- Per Capita Personal Income
- Women in the Workforce

- **Health**

- Infant Mortality
- Low Birth Weight
- Child and Teen deaths rate
- Births to Single Teens
- Prenatal Care
- Immunization Rates



- **Education**

- Enrollments
- Dropouts
- Special Needs

- **Economic**


- Poverty Statistics
- TANF/Foodstamps
- Child care

- **Safety**

- Juvenile Justice Statistics
  - Youth Related Traffic Data
  - Child Abuse & Neglect Data
  - Juvenile Drug and Alcohol Data
  - Youth Tobacco Survey
  - Youth Risk Behavior Survey Data
- 
- 



# How to use the Factbook

- ① Information to write grants; needs assessments
  - ② Problem solving - identify strengths/weaknesses and look at options
  - ③ Policy
  - ④ Advocacy
  - ⑤ Planning and setting priorities
- 

# Cautions When Using The Data

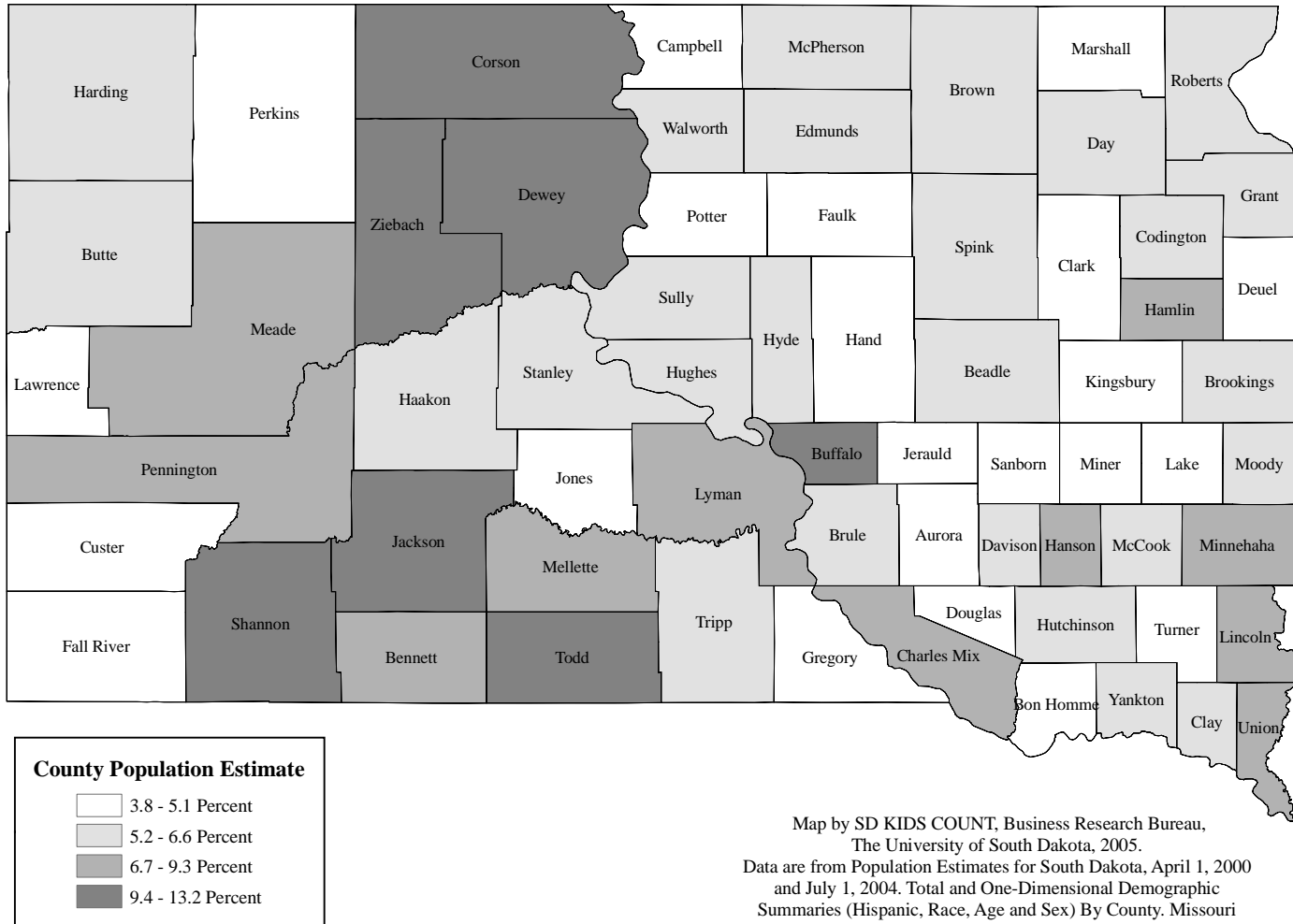
- No data are perfect
- Fluctuations in small number of events
- Numbers, percents, and time



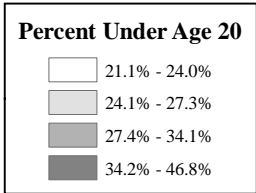
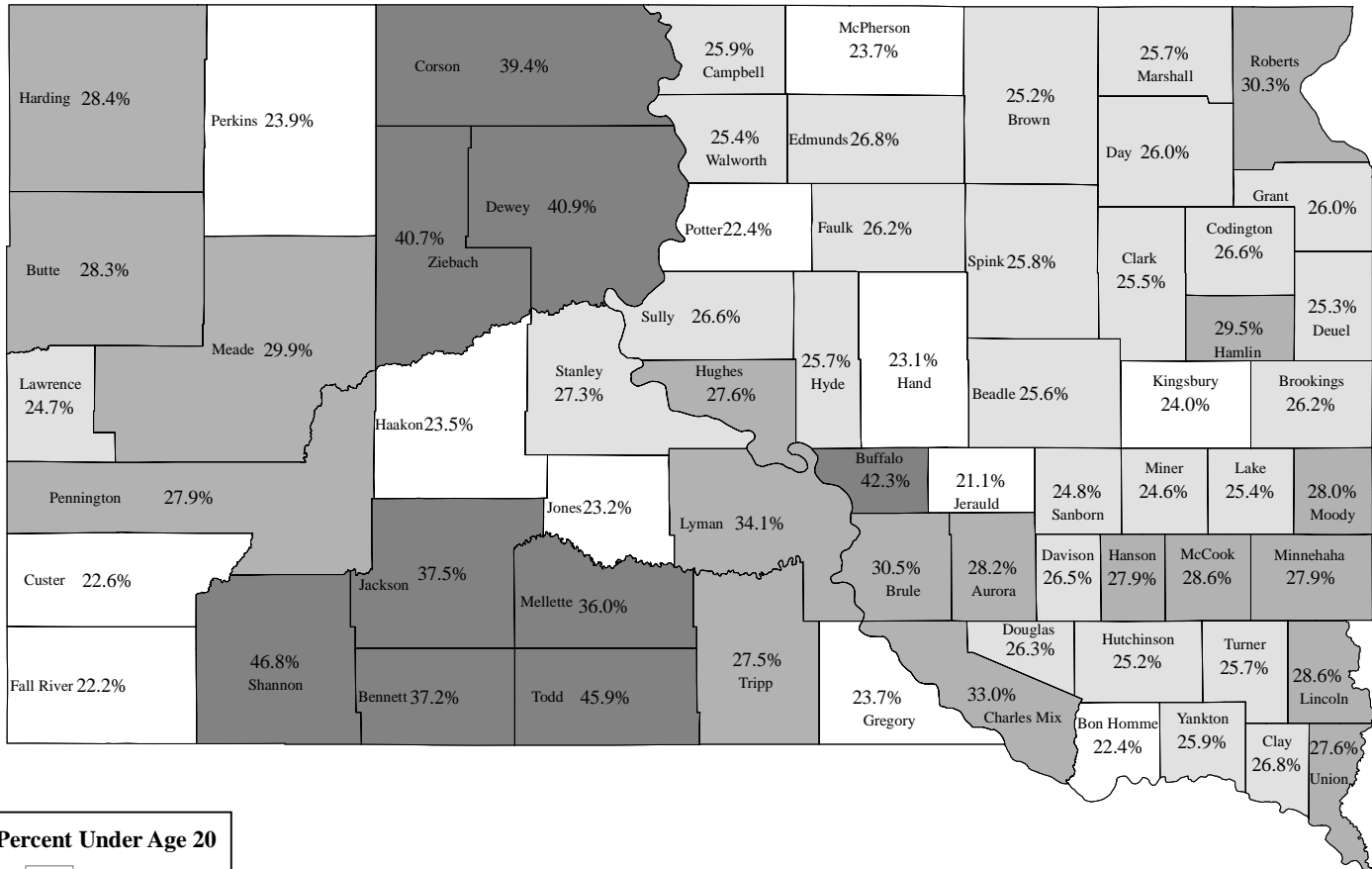
# Demographic Indicators



## Percent of Population Under Age 5 for 2004 Estimated Population South Dakota = 6.7%

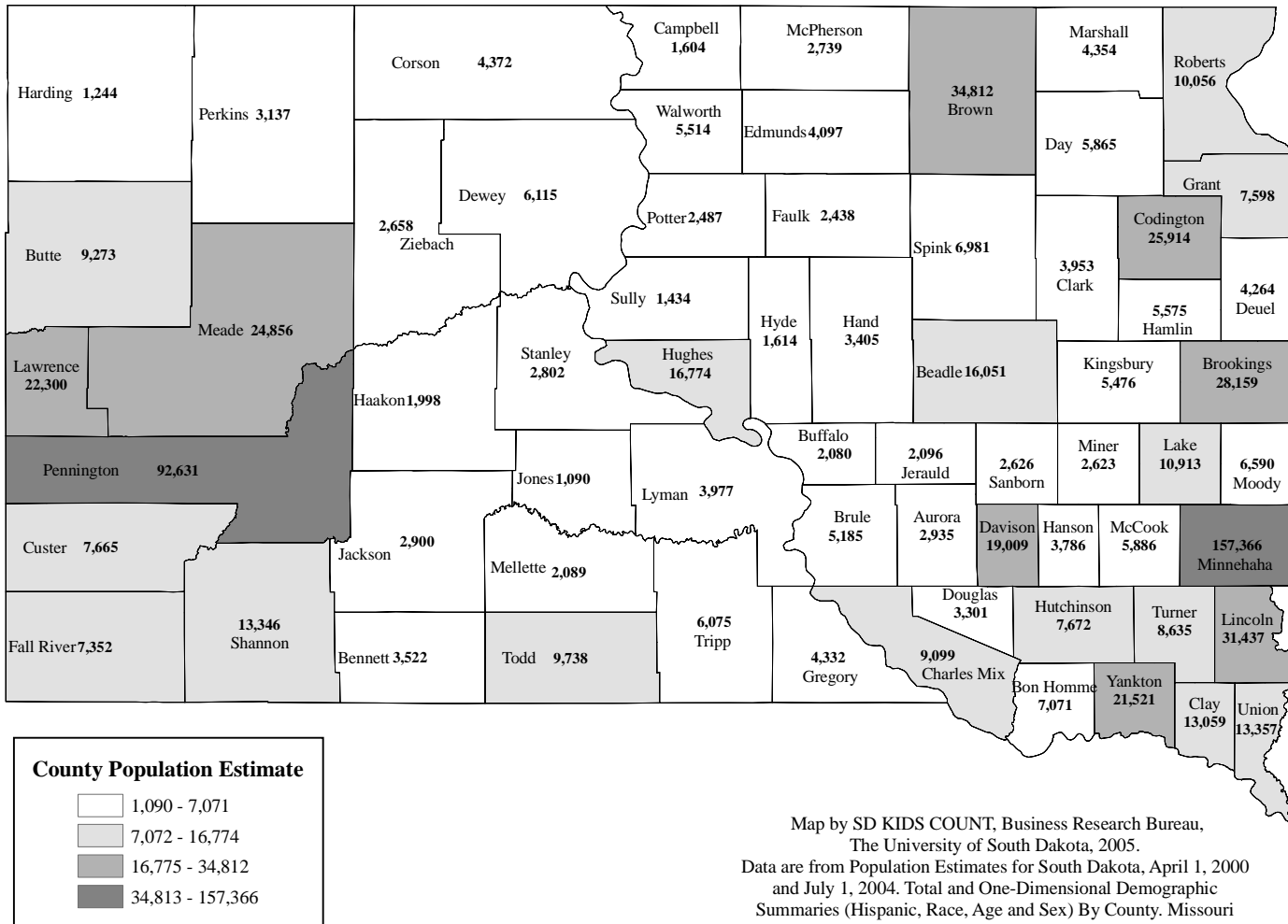


## Percent of Population Under Age 20 by County for 2004 Estimated Population South Dakota = 28%



Map by SD KIDS COUNT, Business Research Bureau, The University of South Dakota, 2005.  
 Data are from Population Estimates for South Dakota, April 1, 2000 and July 1, 2004. Total and One-Dimensional Demographic Summaries (Hispanic, Race, Age and Sex) By County. Missouri Census Data Center: <http://mcdc2.missouri.edu>

## County Population Estimates for 2004 South Dakota = 770,883



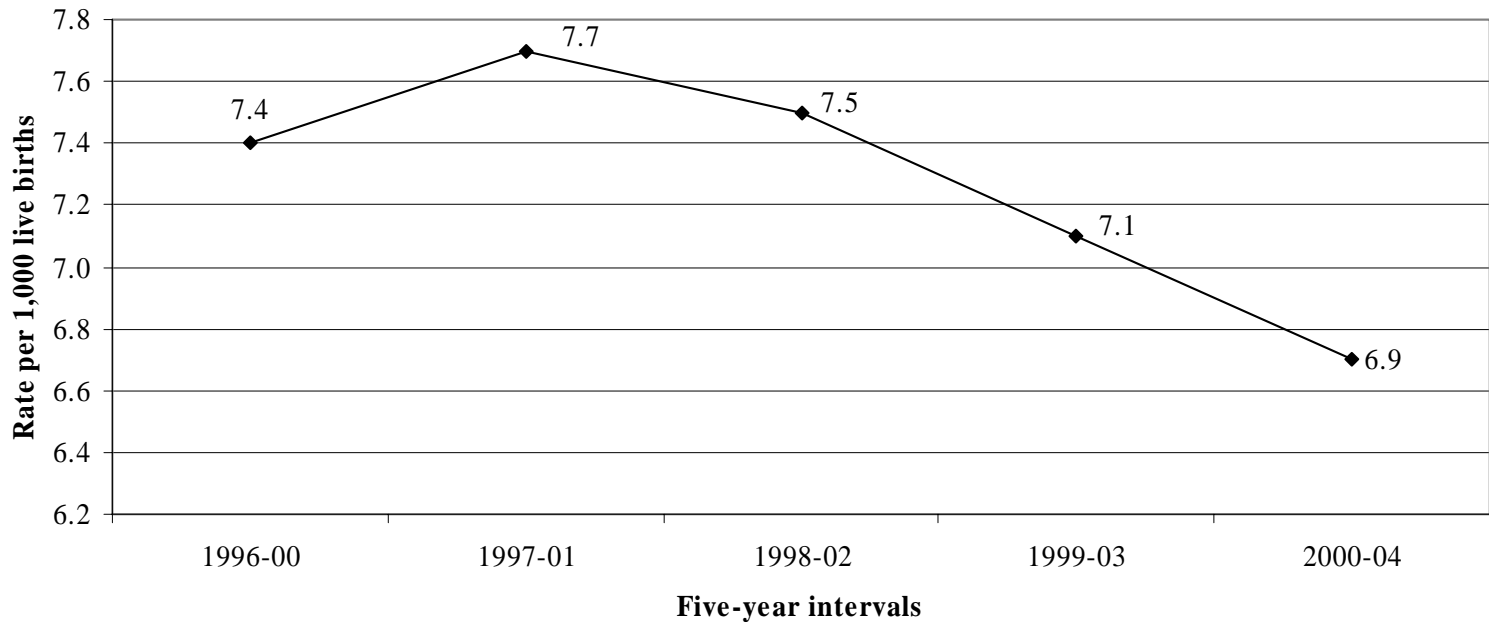


# Health Indicators



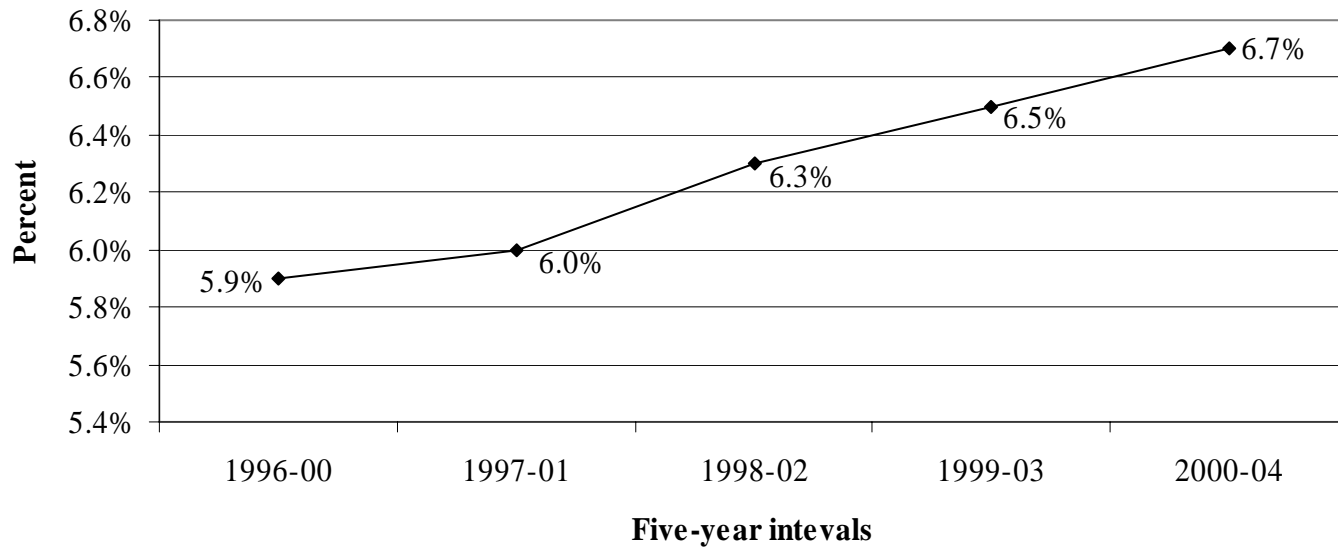
# Infant Mortality [per 1,000 live births]

Rates for infant mortality for five-year intervals  
1996-00 through 2000-04



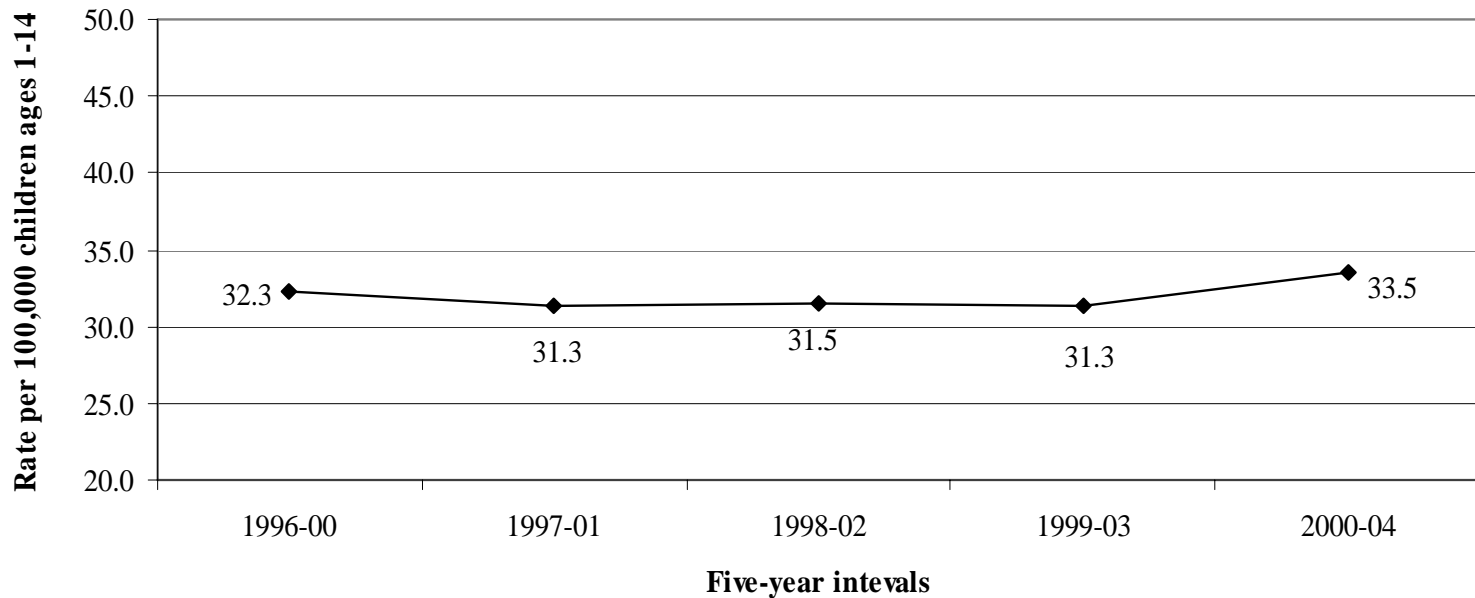
# Low Birthweight Babies [less than 2,500 grams]

Percentage of low birth weight babies for five-year intervals  
1996-00 through 2000-04



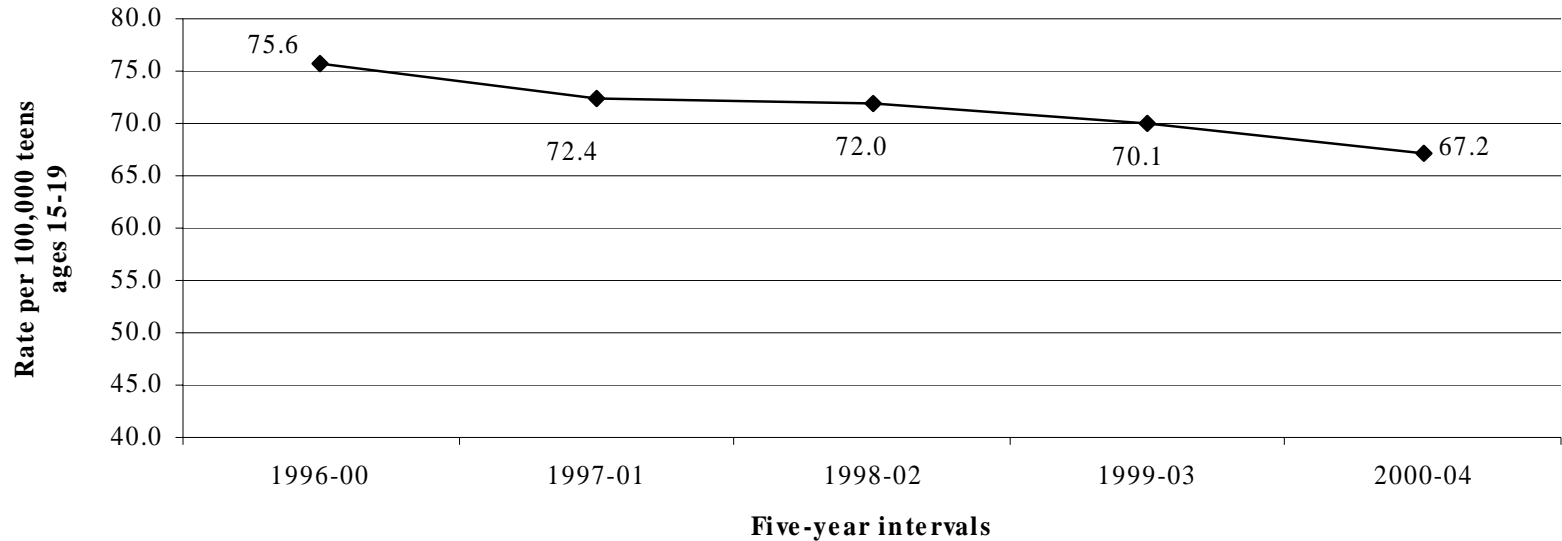
# Child Deaths [per 100,000 ages 1 - 14]

Rates for child deaths for five-year intervals  
1996-00 through 2000-04



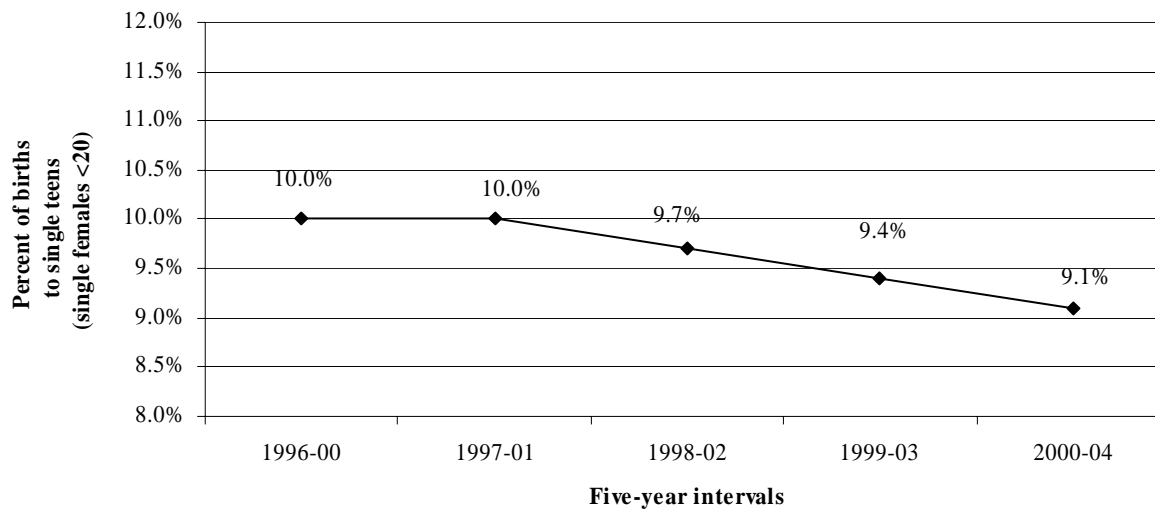
# Teen Violent Death [per 100,000 ages 15-19]

Rates for teen violent deaths for five-year intervals  
1996-00 through 2000-04



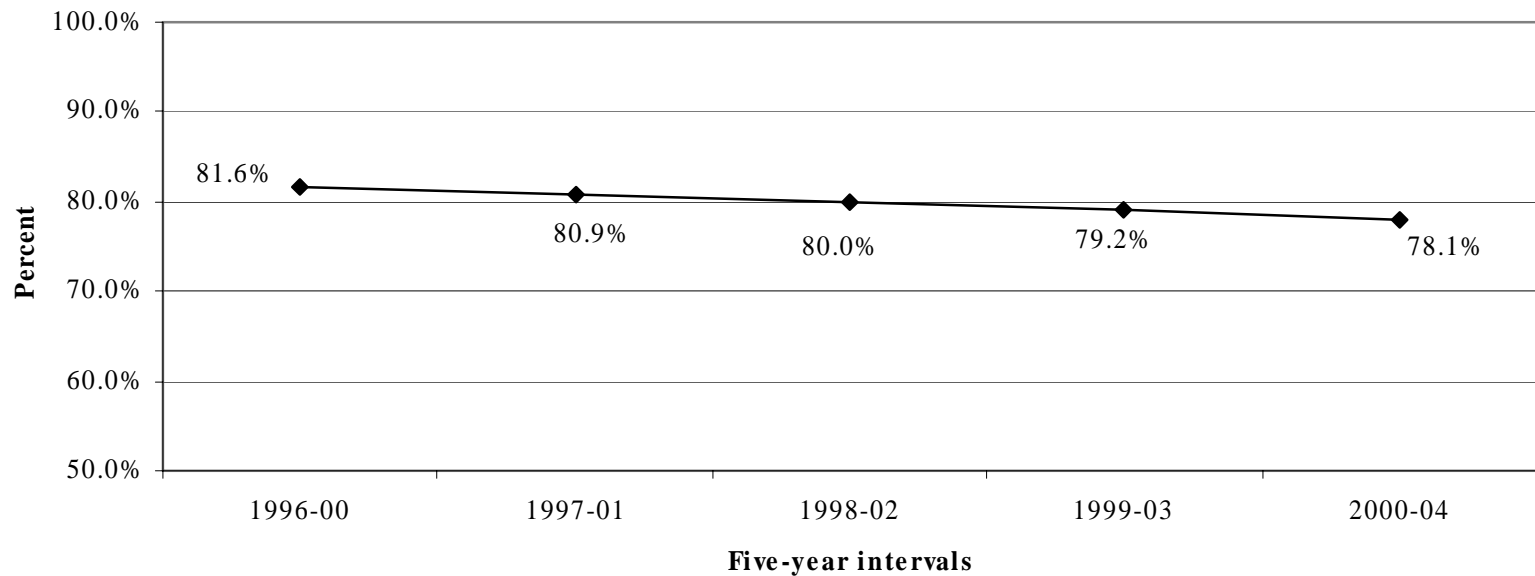
# Births to Single Teens Age <20

Percentage for births to single teens (single females <20)  
for five-year intervals 1996-00 through 2000-04



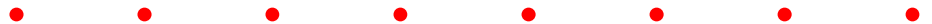
# Women Receiving Prenatal Care (during first trimester)

Percentage for first trimester prenatal care  
for five-year intervals 1996-00 through 2000-04





# Education Indicators



# Enrollment Figures

## Enrollment by School Year

	<b>Public</b>
1991	131,576
1992	133,675
1993	135,267
1994	135,494
1995	134,952
1996	133,883
1997	133,723
1998	132,177
1999	130,232
2000	127,950
2001	125,612
2002	126,390
2003	123,058
2004	121,327

## Enrollment by School Year

	<b>Non-Public</b>
1991	15,803
1992	17,454
1993	17,497
1994	18,503
1995	16,536
1996	16,215
1997	18,264
1998	17,427
1999	17,653
2000	17,937
2001	17,616
2002	16,189
2003	14,927
2004	17,160

# Dropout Figures

## Percent public school drop-outs by school year

	Public
91/92	2.1%
92/93	2.5%
93/94	2.6%
94/95	2.5%
95/96	2.7%
96/97	2.3%
97/98	2.1%
98/99	2.4%
99/00	2.3%
00/01	2.5%
01/02	2.3%
02/03	1.6%
03/04	2.5%
04/05	2.4%

## Percent non-public school drop-outs by school year

	Non-Public
91/92	9.2%
92/93	7.1%
93/94	9.4%
94/95	8.9%
95/96	8.2%
96/97	no data
97/98	8.1%
98/99	10.4%
99/00	10.2%
00/01	6.4%
01/02	7.7%
02/03	5.4%
03/04	8.1%
04/05	8.0%

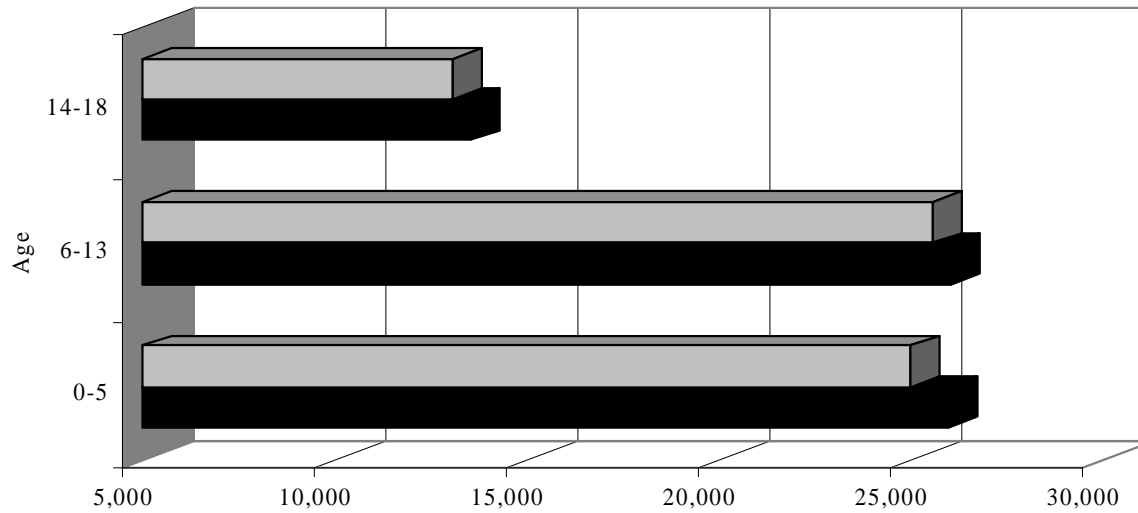


# Economic Indicators



# Medicaid Participation

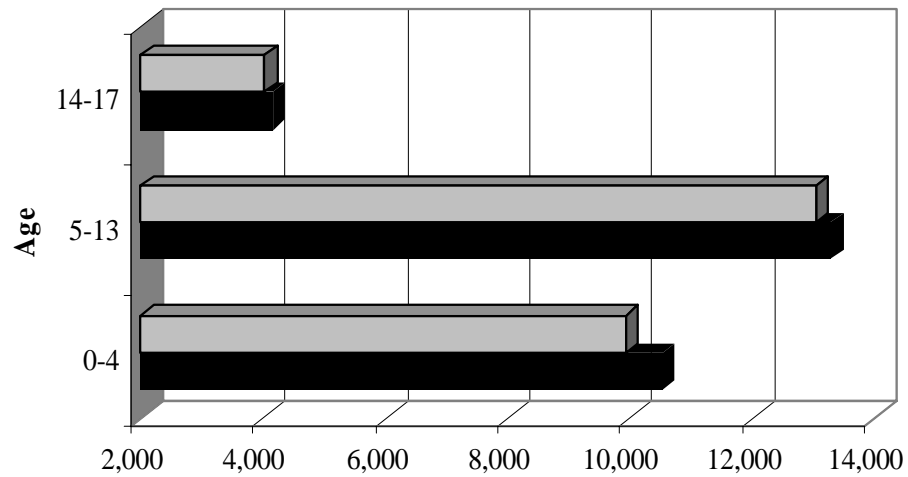
Medicaid participation by age group  
by state fiscal year



	0-5	6-13	14-18
State FY '04	24,945	25,522	13,042
State FY '05	25,954	25,983	13,537

# Foodstamp Participation

Foods tamp participation by age group  
by state fiscal year



	0-4	5-13	14-17
State FY '04	9,935	13,029	4,034
State FY '05	10,522	13,284	4,169

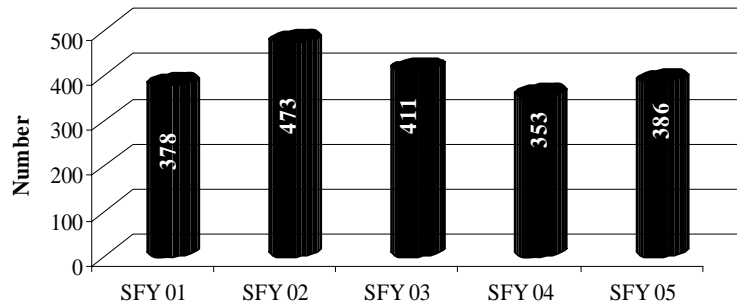


# Safety Indicators

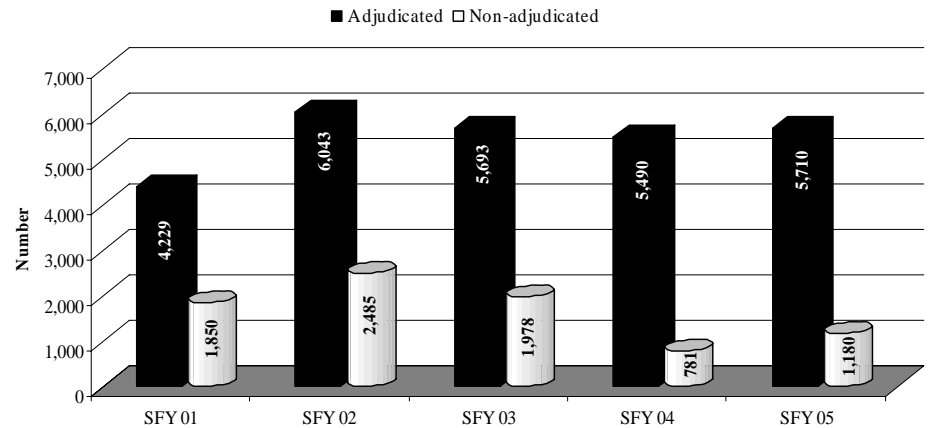


# Juvenile Justice

Juvenile commitments to the Department of Corrections by state fiscal year (SFY)

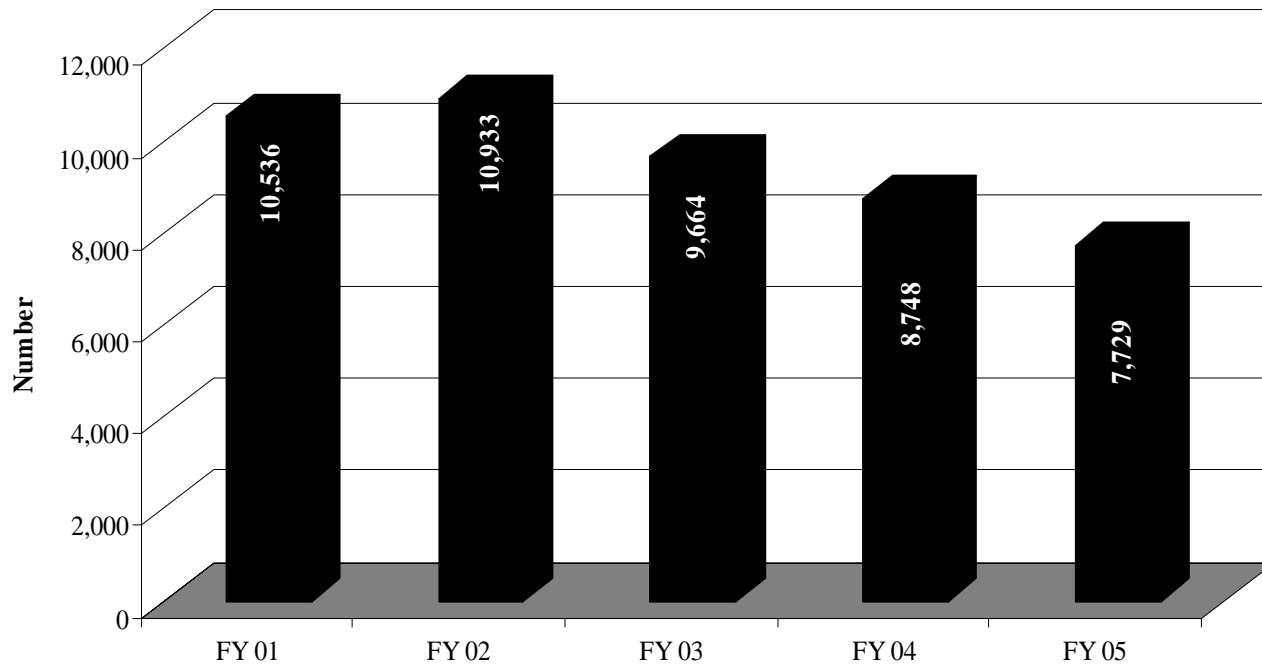


Juvenile adjudicated or non-adjudicated actions by state fiscal year (SFY)



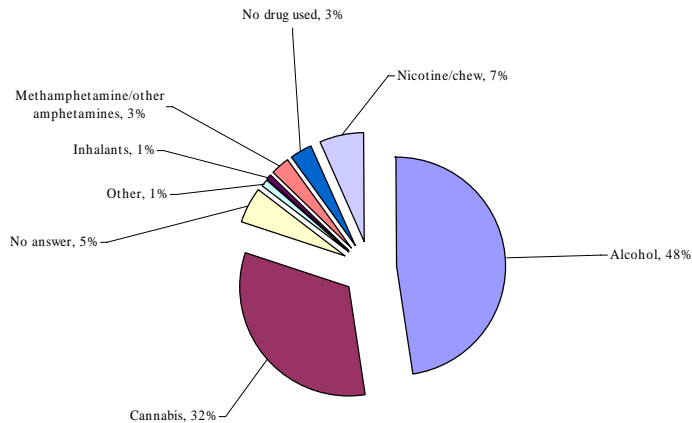
# Child Abuse and Neglect

Child abuse & neglect initial family assessments  
by state fiscal year

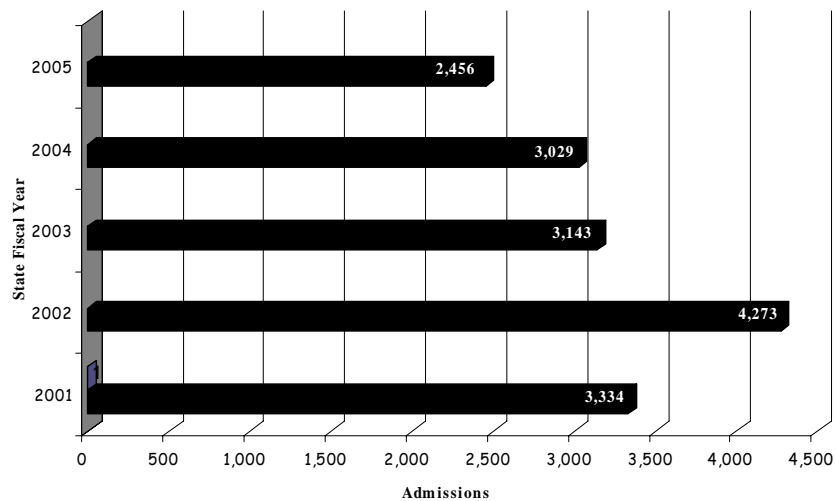


# Juvenile Drug and Alcohol

Primary drug of abuse for adolescents under age 18 who received services  
State Fiscal Year 2005



Juvenile admissions to drug or alcohol treatment programs  
State Fiscal Years 2001 - 2005





# Youth Risk Behavior Survey



# Behaviors that result in intentional & unintentional injuries

	1993	1995	1997	1999	2001	2003
Always wore a seatbelt when riding in a car	7%	15%	14%	15%	20%	28%
Always wore a seatbelt when driving a car	NC	NC	NC	25%	36%	45%
Always wore a bicycle helmet	1%	1%	1%	1%	2%	3%
During the past 30 days, rode in a car driven by someone who had been drinking alcohol	51%	49%	50%	44%	38%	36%
During the past 30 days, drove a car when they had been drinking	29%	30%	31%	27%	22%	22%
Carried a weapon during the past 30 days	22%	23%	19%	17%	7%	7%
Were in a physical fight during the past 12 mos.	40%	35%	31%	31%	31%	27%
Were ever touched, grabbed or pinched in a sexual way during school-related times	NC	32%	33%	29%	28%	25%
Had others make sexual comments, jokes, gestures or looks during school-related times	NC	49%	47%	43%	41%	37%
Seriously considered attempting suicide during the past 12 mos.	29%	26%	27%	22%	19%	19%
Attempted suicide during the past 12 mos.	11%	10%	11%	7%	13%	9%
Were ever physically forced to have sexual intercourse when they did not want to	NC	NC	NC	10%	8%	9%

# Sexual Behaviors

	1993	1995	1997	1999	2001	2003
Ever had sexual intercourse	52%	41%	41%	44%	40%	42%
Had sexual intercourse prior to age 13	NC	5%	5%	5%	3%	4%
Had sexual intercourse with four or more people during their life	16%	13%	14%	14%	11%	12%
Drank alcohol or used drugs before last sexual intercourse	15%	33%	35%	32%	28%	32%
Used or whose partner used a condom during last sexual intercourse	55%	50%	54%	59%	61%	65%
Have been pregnant or have gotten someone pregnant	6%	4%	3%	4%	4%	3%
Had sexual intercourse with one or more people during the past 3 mos.	NC	NC	NC	32%	29%	30%
Have been taught about AIDS/HIV infection in school	92%	95%	93%	87%	87%	88%

# Dietary Behaviors

	1993	1995	1997	1999	2001	2003
Think of themselves as about the right weight.	41%	48%	52%	51%	49%	52%
Are trying to lose weight	46%	46%	46%	44%	46%	50%
Vomited or took laxatives to lose weight or keep from gaining weight during the past 30 days	NC	6%	6%	5%	6%	7%
Took diet pills to lose weight/keep from gaining weight during the past 30 days	NC	6%	7%	7%	9%	8%
Are at risk for becoming overweight	NC	NC	NC	13%	13%	14%
Are overweight	NC	NC	NC	6%	7%	9%
Ate breakfast 4 or more times during the past 7 days	n/a	n/a	n/a	52%	53%	51%
Ate 5 or more servings of fruits and vegetables per day during past 7 days	NC	NC	NC	19%	16%	17%
Drank 3 or more glasses of milk per day during the past 7 days	NC	NC	NC	30%	25%	24%

# Physical Activity

	1993	1995	1997	1999	2001	2003
Did exercises to strengthen or tone their muscles during 3 or more of past 7 days	48%	46%	47%	51%	52%	49%
Go to physical education class 1 or more days in an average school week	33%	27%	32%	32%	22%	27%
Of those who go to physical education class 1 or more days in an average school week actually spend more than 20 minutes exercising or playing sports during an average physical education class	NC	NC	NC	82%	83%	86%
Exercised or participated in physical activities for at least 20 minutes that made them sweat and breathe hard on 3 or more of the past 7 days	NC	NC	NC	63%	58%	62%
Participated in physical activities that did not make them sweat or breathe hard for at least 30 minutes on 5 or more of the past 7 days	NC	NC	NC	25%	25%	26%
Played on one or more sports teams during the past 12 months	NC	NC	NC	63%	64%	65%
Participated in no vigorous or moderate physical activity during the past 7 days	NC	NC	NC	NC	12%	9%
On an average school day watched TV for 3 or more hours per day	NC	NC	NC	NC	25%	28%
On an average school day played video games or used a computer for fun for 3 or more hours per day	NC	NC	NC	NC	22%	14%

# Tobacco Use

	1993	1995	1997	1999	2001	2003
Ever tried cigarette smoking	71%	71%	75%	74%	67%	60%
Smoked whole cigarette prior to age 13	NC	25%	26%	27%	26%	18%
Smoked cigarettes one or more of the past 30 days	37%	38%	44%	44%	33%	30%
Are smokers who tried to quit smoking during the past 12 months	NC	NC	NC	NC	65%	62%
Used chewing tobacco or snuff during past 30 days	23%	23%	18%	16%	15%	15%
Smoked cigars, cigarillos, or little cigars on one or more of the past 30 days	NC	NC	NC	18%	14%	14%
Are smokers who bought their cigarettes in a store	NC	45%	28%	24%	26%	27%
Are smokers who were asked to show proof of age when they bought cigarettes in a store	NC	31%	61%	61%	55%	55%

# Alcohol and Other Drug Use

	1993	1995	1997	1999	2001	2003
Drank alcohol during their life	NC	80%	83%	86%	81%	76%
Drank alcohol prior to age 13	NC	36%	31%	30%	32%	25%
Had at least 1 drink of alcohol during past 30 days	61%	54%	60%	59%	50%	50%
Had 5 or more drinks of alcohol in a row during the past 30 days	44%	39%	45%	46%	36%	38%
Used marijuana during their life	20%	24%	35%	38%	36%	37%
Used marijuana during the past 30 days	10%	12%	20%	21%	18%	21%
Used any form of cocaine during their life	5%	4%	9%	9%	8%	7%
Used methamphetamines one or more times during their life	NC	NC	NC	10%	8%	7%
Ever injected any illegal drugs during their life	4%	2%	3%	2%	7%	2%
Had taken steroid shots or pills without a doctor's prescription during their life	4%	4%	3%	3%	5%	3%
Ever sniffed glue or inhaled spray from cans	NC	21%	18%	14%	15%	11%