

Title: **Wireless and Cisco NAC Setup for Mac 10.5**

Application: Mac OS X 10.5 (Leopard)

Description: Connecting to university wireless and Cisco NAC Agent.

Date Modified: January 3, 2011

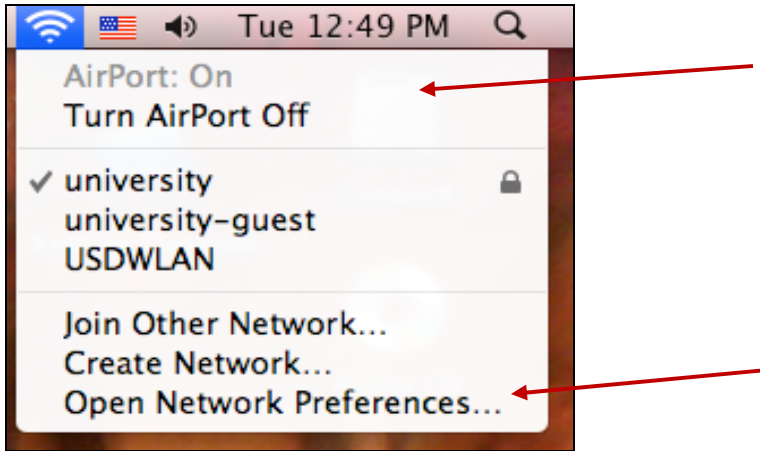


Figure 1

Make sure the AirPort is on
See Figure 1.

When “On” go to “Open Network Preferences”.

You may need to click the
“Padlock” in the lower left corner to
allow changes to be made.

Make sure you have the correct
“Network Name” chosen, i.e.
university.

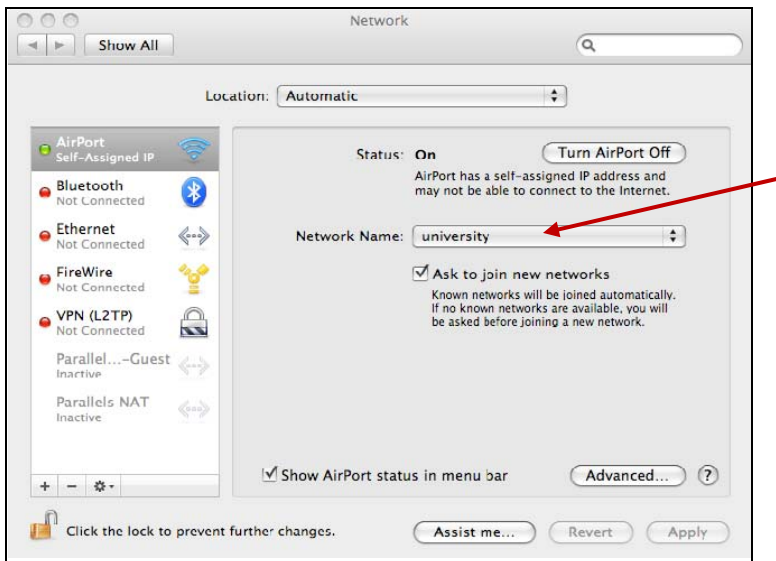


Figure 2

Enter your **USD** User Name and
Password.
Leave “Remember this network”
checked.
Click “OK”

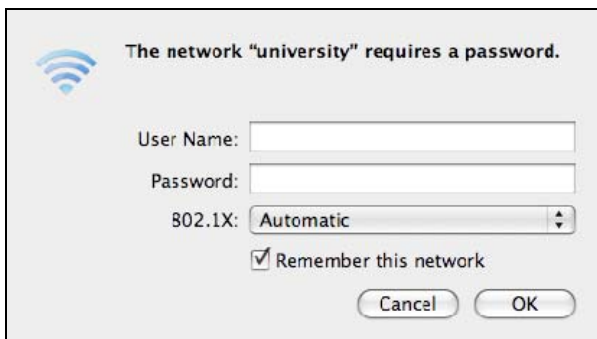


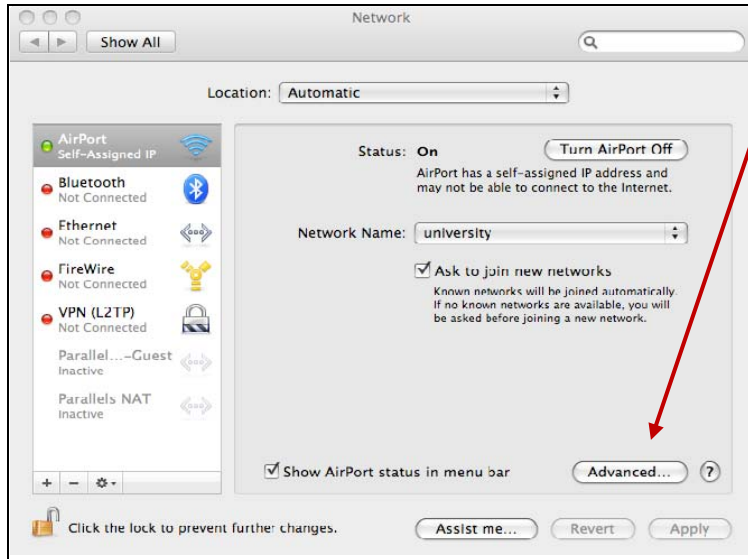
Figure 3

Title: **Wireless and Cisco NAC Setup for Mac 10.5**

Application: Mac OS X 10.5 (Leopard)

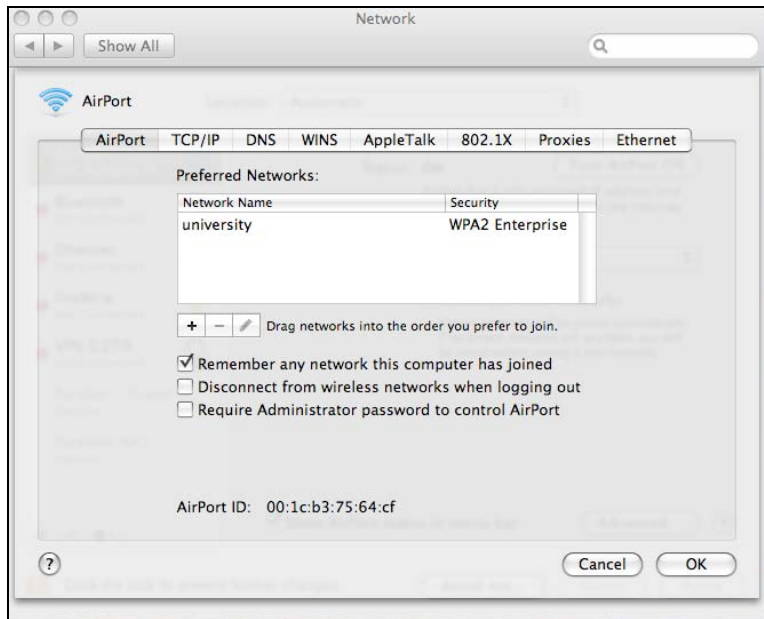
Description: Connecting to university wireless and Cisco NAC Agent.

Date Modified: January 3, 2011



Click "Advanced".

Figure 4



This screen will appear

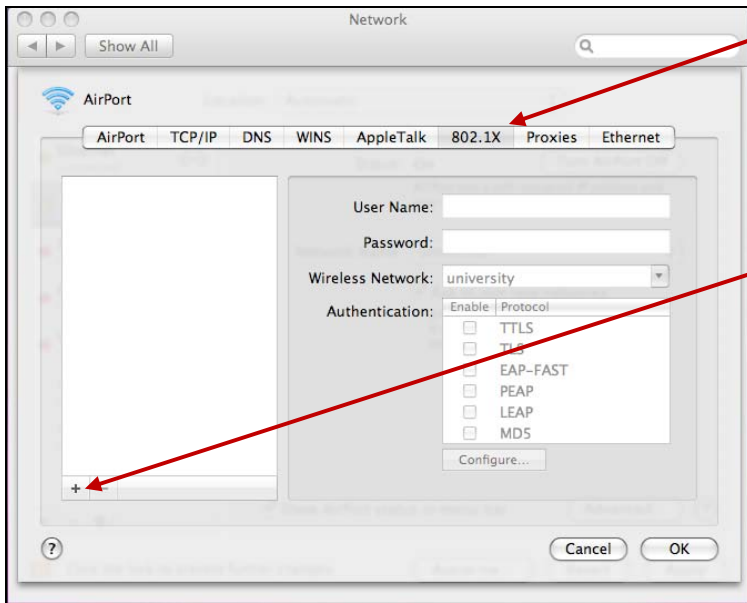
Figure 5

Title: **Wireless and Cisco NAC Setup for Mac 10.5**

Application: Mac OS X 10.5 (Leopard)

Description: Connecting to university wireless and Cisco NAC Agent.

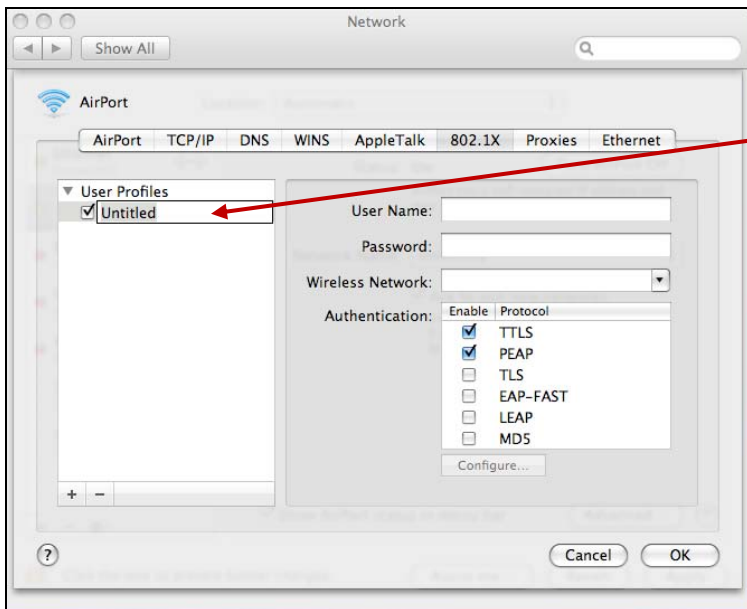
Date Modified: January 3, 2011



Click on '802.1X' tab.

Click the + on the lower left to add a new profile and choose "Add User Profile".

Figure 6



Name the Profile "University"

Figure 7

Title: **Wireless and Cisco NAC Setup for Mac 10.5**

Application: Mac OS X 10.5 (Leopard)

Description: Connecting to university wireless and Cisco NAC Agent.

Date Modified: January 3, 2011

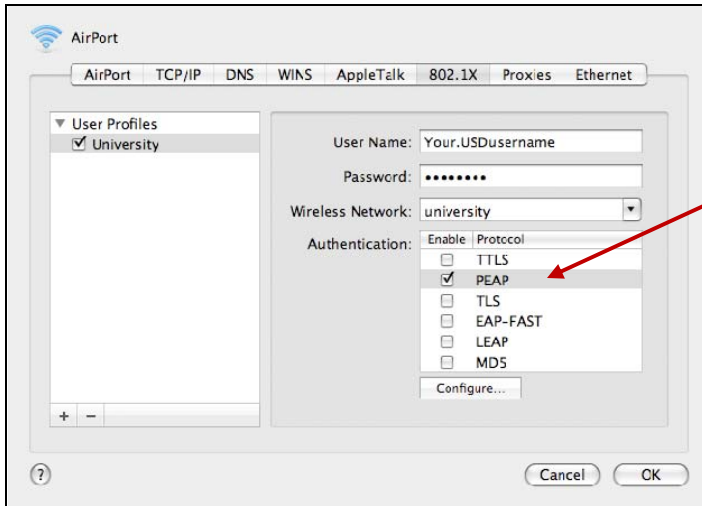


Figure 8

Enter your **USD** User Name and Password.

Select “university” in the dropdown.

Uncheck everything but “PEAP”.



Figure 9

Click ‘OK’

The following screen will appear. It may be behind other windows.

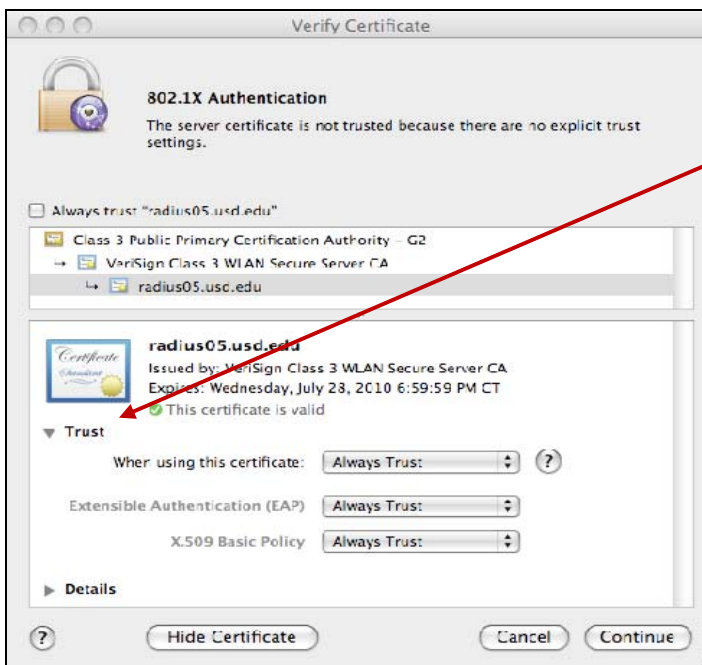


Figure 10

Click ‘Show Certificate’ on the left.

Expand ‘Trust’.

In “When using this certificate:” click the drop down and choose ‘Always Trust’

Click ‘Continue’

Title: **Wireless and Cisco NAC Setup for Mac 10.5**

Application: Mac OS X 10.5 (Leopard)

Description: Connecting to university wireless and Cisco NAC Agent.

Date Modified: January 3, 2011



Figure 11

Enter the password you use to log into your Mac. **Not your USD login.**

Click “OK”.

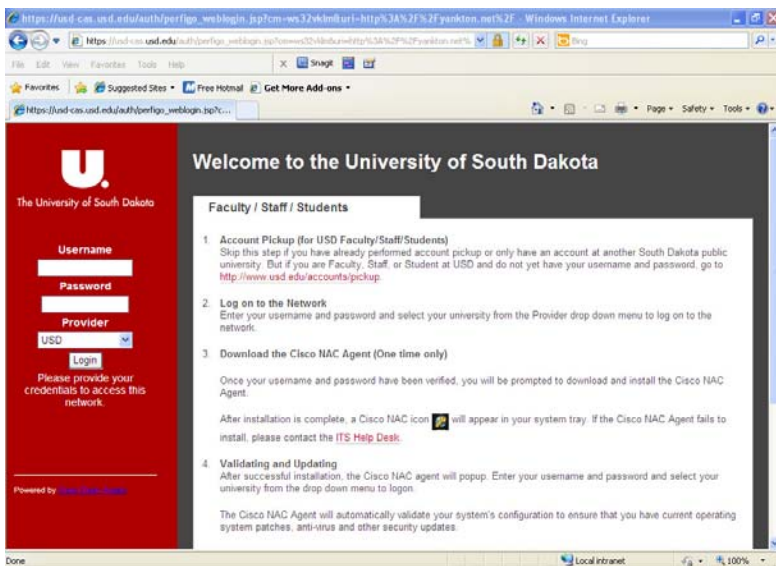


Figure 12

Launch any web browser.

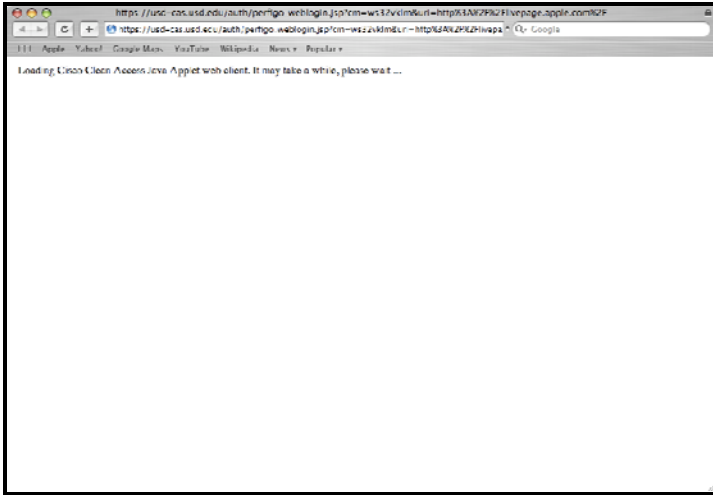
This screen will briefly appear.

Title: **Wireless and Cisco NAC Setup for Mac 10.5**

Application: Mac OS X 10.5 (Leopard)

Description: Connecting to university wireless and Cisco NAC Agent.

Date Modified: January 3, 2011



Quickly followed by this screen and.....

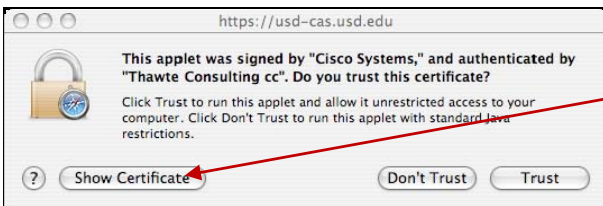


Figure13

....then this screen to which you click "Show Certificate".

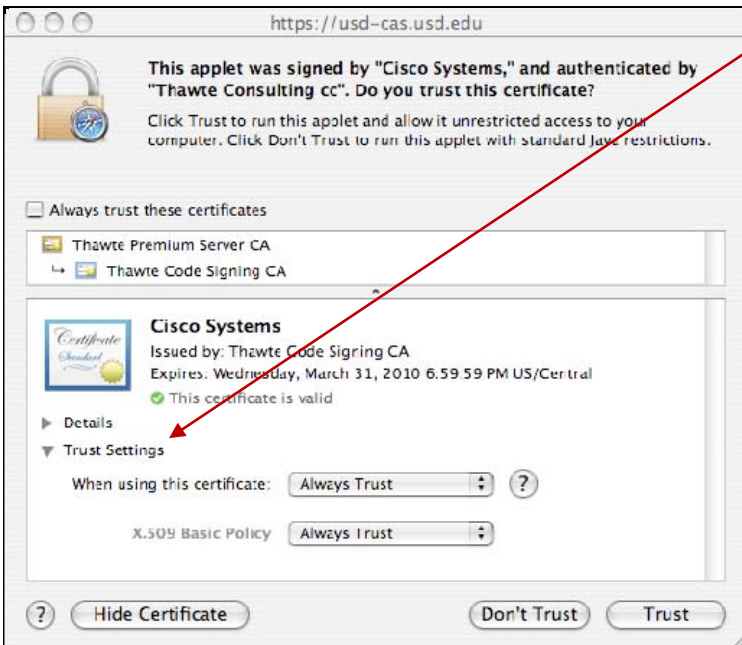


Figure 14

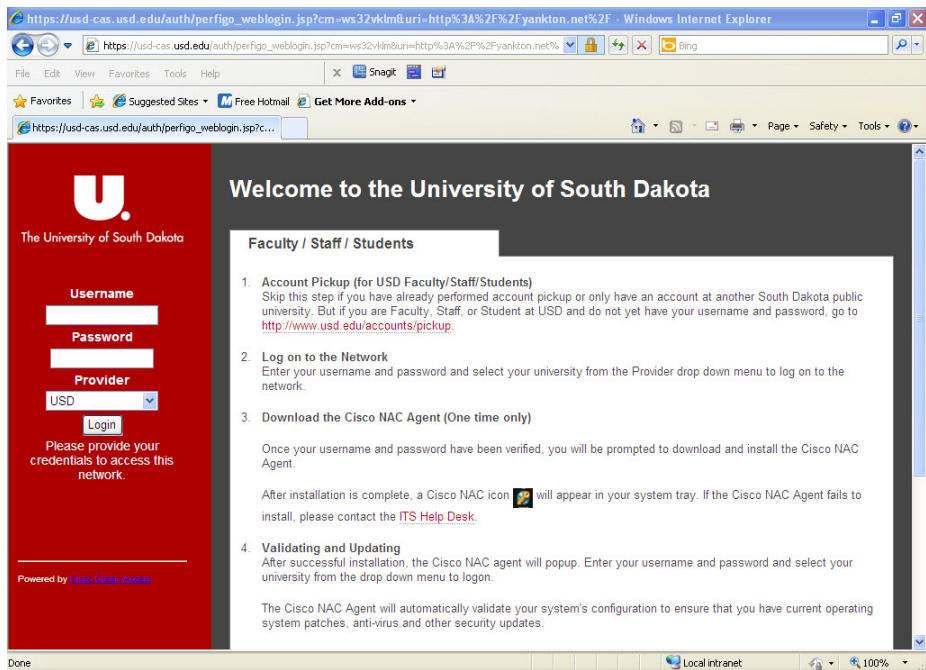
Expand the "Trust Settings" and select "Always Trust"

Title: **Wireless and Cisco NAC Setup for Mac 10.5**

Application: Mac OS X 10.5 (Leopard)

Description: Connecting to university wireless and Cisco NAC Agent.

Date Modified: January 3, 2011



Enter your USD Username and Password

Figure 15